

edgeR: differential expression analysis
of digital gene expression data

User's Guide

Yunshun Chen, Davis McCarthy,
Matthew Ritchie, Mark Robinson, Gordon K. Smyth

First edition 17 September 2008

Last revised 11 October 2017

Contents

1	Introduction	5
1.1	Scope	5
1.2	Citation	6
1.3	How to get help	7
1.4	Quick start	8
2	Overview of capabilities	10
2.1	Terminology	10
2.2	Aligning reads to a genome	10
2.3	Producing a table of read counts	10
2.4	Reading the counts from a file	11
2.5	The DGEList data class	11
2.6	Filtering	12
2.7	Normalization	13
2.7.1	Normalization is only necessary for sample-specific effects	13
2.7.2	Sequencing depth	13
2.7.3	RNA composition	13
2.7.4	GC content	14
2.7.5	Gene length	14
2.7.6	Model-based normalization, not transformation	14
2.7.7	Pseudo-counts	15
2.8	Negative binomial models	15
2.8.1	Introduction	15
2.8.2	Biological coefficient of variation (BCV)	16
2.8.3	Estimating BCVs	17
2.8.4	Quasi negative binomial	18
2.9	Pairwise comparisons between two or more groups (classic)	18
2.9.1	Estimating dispersions	18
2.9.2	Testing for DE genes	19
2.10	More complex experiments (glm functionality)	20
2.10.1	Generalized linear models	20

2.10.2	Estimating dispersions	20
2.10.3	Testing for DE genes	21
2.11	What to do if you have no replicates	22
2.12	Differential expression above a fold-change threshold	24
2.13	Gene ontology (GO) and pathway analysis	25
2.14	Gene set testing	25
2.15	Clustering, heatmaps etc	26
2.16	Alternative splicing	27
2.17	CRISPR-Cas9 and shRNA-seq screen analysis	27
2.18	Bisulfite sequencing and differential methylation analysis	28
3	Specific experimental designs	29
3.1	Introduction	29
3.2	Two or more groups	29
3.2.1	Introduction	29
3.2.2	Classic approach	30
3.2.3	GLM approach	31
3.2.4	Questions and contrasts	32
3.2.5	A more traditional glm approach	33
3.2.6	An ANOVA-like test for any differences	34
3.3	Experiments with all combinations of multiple factors	35
3.3.1	Defining each treatment combination as a group	35
3.3.2	Nested interaction formulas	37
3.3.3	Treatment effects over all times	37
3.3.4	Interaction at any time	38
3.4	Additive models and blocking	38
3.4.1	Paired samples	38
3.4.2	Blocking	39
3.4.3	Batch effects	41
3.5	Comparisons both between and within subjects	41
4	Case studies	44
4.1	RNA-Seq of oral carcinomas vs matched normal tissue	44
4.1.1	Introduction	44
4.1.2	Reading in the data	44
4.1.3	Annotation	45
4.1.4	Filtering and normalization	46
4.1.5	Data exploration	47
4.1.6	The design matrix	47
4.1.7	Estimating the dispersion	48
4.1.8	Differential expression	49

4.1.9	Gene ontology analysis	51
4.1.10	Setup	52
4.2	RNA-Seq of pathogen inoculated arabidopsis with batch effects	53
4.2.1	Introduction	53
4.2.2	RNA samples	53
4.2.3	Loading the data	53
4.2.4	Filtering and normalization	54
4.2.5	Data exploration	54
4.2.6	The design matrix	55
4.2.7	Estimating the dispersion	56
4.2.8	Differential expression	57
4.2.9	Setup	59
4.3	Profiles of Yoruba HapMap individuals	60
4.3.1	Background	60
4.3.2	Loading the data	60
4.3.3	Filtering and normalization	62
4.3.4	Estimating the dispersion	63
4.3.5	Differential expression	64
4.3.6	Gene set testing	65
4.3.7	Setup	67
4.4	RNA-Seq profiles of mouse mammary gland	68
4.4.1	Introduction	68
4.4.2	Read alignment and processing	69
4.4.3	Count loading and annotation	69
4.4.4	Filtering and normalization	70
4.4.5	Data exploration	71
4.4.6	The design matrix	72
4.4.7	Estimating the dispersion	73
4.4.8	Differential expression	75
4.4.9	ANOVA-like testing	78
4.4.10	Gene ontology analysis	79
4.4.11	Gene set testing	81
4.4.12	Setup	82
4.5	Differential splicing after Pasilla knockdown	83
4.5.1	Introduction	83
4.5.2	RNA-Seq samples	83
4.5.3	Read alignment and processing	84
4.5.4	Count loading and annotation	85
4.5.5	Filtering and normalization	86
4.5.6	Data exploration	87
4.5.7	The design matrix	88

4.5.8	Estimating the dispersion	88
4.5.9	Differential expression	90
4.5.10	Alternative splicing	90
4.5.11	Setup	93
4.5.12	Acknowledgements	93
4.6	CRISPR-Cas9 knockout screen analysis	93
4.6.1	Introduction	93
4.6.2	Sequence processing	94
4.6.3	Filtering and data exploration	94
4.6.4	The design matrix and dispersion estimation	98
4.6.5	Differential representation analysis	99
4.6.6	Gene set tests to summarize over multiple sgRNAs targeting the same gene	100
4.6.7	Setup	102
4.6.8	Acknowledgements	102
4.7	Bisulfite sequencing of mouse oocytes	103
4.7.1	Introduction	103
4.7.2	Reading in the data	103
4.7.3	Filtering and normalization	105
4.7.4	Data exploration	106
4.7.5	The design matrix	107
4.7.6	Estimating the dispersion	108
4.7.7	Differentially methylated regions	108
4.7.8	Setup	110

Chapter 1

Introduction

1.1 Scope

This guide provides an overview of the Bioconductor package edgeR for differential expression analyses of read counts arising from RNA-Seq, SAGE or similar technologies [28]. The package can be applied to any technology that produces read counts for genomic features. Of particular interest are summaries of short reads from massively parallel sequencing technologies such as IlluminaTM, 454 or ABI SOLiD applied to RNA-Seq, SAGE-Seq or ChIP-Seq experiments, pooled shRNA-seq or CRISPR-Cas9 genetic screens and bisulfite sequencing for DNA methylation studies. edgeR provides statistical routines for assessing differential expression in RNA-Seq experiments or differential marking in ChIP-Seq experiments.

The package implements exact statistical methods for multigroup experiments developed by Robinson and Smyth [30, 31]. It also implements statistical methods based on generalized linear models (glms), suitable for multifactor experiments of any complexity, developed by McCarthy et al. [19], Lund et al. [17], Chen et al. [5] and Lun et al. [16]. Sometimes we refer to the former exact methods as *classic* edgeR, and the latter as *glm* edgeR. However the two sets of methods are complementary and can often be combined in the course of a data analysis. Most of the glm functions can be identified by the letters “glm” as part of the function name. The glm functions can test for differential expression using either likelihood ratio tests [19, 5] or quasi-likelihood F-tests [17, 16].

A particular feature of edgeR functionality, both classic and glm, are empirical Bayes methods that permit the estimation of gene-specific biological variation, even for experiments with minimal levels of biological replication.

edgeR can be applied to differential expression at the gene, exon, transcript or tag level. In fact, read counts can be summarized by any genomic feature. edgeR analyses at the exon level are easily extended to detect differential splicing or isoform-specific differential expression.

This guide begins with brief overview of some of the key capabilities of package, and then gives a number of fully worked case studies, from counts to lists of genes.

1.2 Citation

The edgeR package implements statistical methods from the following publications. Please try to cite the appropriate articles when you publish results obtained using the software, as such citation is the main means by which the authors receive credit for their work.

Robinson, MD, and Smyth, GK (2008). Small sample estimation of negative binomial dispersion, with applications to SAGE data. *Biostatistics* 9, 321–332.

Proposed the idea of sharing information between genes by estimating the negative binomial variance parameter globally across all genes. This made the use of negative binomial models practical for RNA-Seq and SAGE experiments with small to moderate numbers of replicates. Introduced the terminology *dispersion* for the variance parameter. Proposed conditional maximum likelihood for estimating the dispersion, assuming common dispersion across all genes. Developed an exact test for differential expression appropriate for the negative binomially distributed counts. Despite the official publication date, this was the first of the papers to be submitted and accepted for publication.

Robinson, MD, and Smyth, GK (2007). Moderated statistical tests for assessing differences in tag abundance. *Bioinformatics* 23, 2881–2887.

Introduced empirical Bayes moderated dispersion parameter estimation. This is a crucial improvement on the previous idea of estimating the dispersions from a global model, because it permits gene-specific dispersion estimation to be reliable even for small samples. Gene-specific dispersion estimation is necessary so that genes that behave consistently across replicates should rank more highly than genes that do not.

Robinson, MD, McCarthy, DJ, Smyth, GK (2010). edgeR: a Bioconductor package for differential expression analysis of digital gene expression data. *Bioinformatics* 26, 139–140.

Announcement of the edgeR software package. Introduced the terminology *coefficient of biological variation*.

Robinson, MD, and Oshlack, A (2010). A scaling normalization method for differential expression analysis of RNA-seq data. *Genome Biology* 11, R25.

Introduced the idea of model-based scale normalization of RNA-Seq data. Proposed TMM normalization.

McCarthy, DJ, Chen, Y, Smyth, GK (2012). Differential expression analysis of multifactor RNA-Seq experiments with respect to biological variation. *Nucleic Acids Research* 40, 4288–4297.

Extended negative binomial differential expression methods to glms, making the methods applicable to general experiments. Introduced the use of Cox-Reid approximate

conditional maximum likelihood for estimating the dispersion parameters, and used this for empirical Bayes moderation. Developed fast algorithms for fitting glms to thousands of genes in parallel. Gives a more complete explanation of the concept of *biological coefficient of variation*.

Lun, ATL, Chen, Y, and Smyth, GK (2016). It's DE-licious: a recipe for differential expression analyses of RNA-seq experiments using quasi-likelihood methods in edgeR. *Methods in Molecular Biology* 1418, 391–416.

This book chapter explains the `glmQLFit` and `glmQLFTest` functions, which are alternatives to `glmFit` and `glmLRT`. They replace the chisquare approximation to the likelihood ratio statistic with a quasi-likelihood F-test, resulting in more conservative and rigorous type I error rate control.

Chen, Y, Lun, ATL, and Smyth, GK (2014). Differential expression analysis of complex RNA-seq experiments using edgeR. In: *Statistical Analysis of Next Generation Sequence Data*, Somnath Datta and Daniel S Nettleton (eds), Springer, New York.

This book chapter explains the `estimateDisp` function and the weighted likelihood empirical Bayes method.

Zhou X, Lindsay H, and Robinson MD (2014). Robustly detecting differential expression in RNA sequencing data using observation weights. *Nucleic Acids Research*, 42, e91.

Explains `estimateGLMRobustDisp`, which is designed to make the downstream tests done by `glmLRT` robust to outlier observations.

Dai, Z, Sheridan, JM, Gearing, LJ, Moore, DL, Su, S, Wormald, S, Wilcox, S, O'Connor, L, Dickins, RA, Blewitt, ME and Ritchie, ME (2014). edgeR: a versatile tool for the analysis of shRNA-seq and CRISPR-Cas9 genetic screens. *F1000Research* 3, 95.

This paper explains the `processAmplicons` function for obtaining counts from the fastq files of shRNA-seq and CRISPR-Cas9 genetic screens and outlines a general workflow for analyzing data from such screens.

1.3 How to get help

Most questions about edgeR will hopefully be answered by the documentation or references. If you've run into a question that isn't addressed by the documentation, or you've found a conflict between the documentation and what the software does, then there is an active support community that can offer help.

The edgeR authors always appreciate receiving reports of bugs in the package functions or in the documentation. The same goes for well-considered suggestions for improvements. All other questions or problems concerning edgeR should be posted to the Bioconductor support

site <https://support.bioconductor.org>. Please send requests for general assistance and advice to the support site rather than to the individual authors. Posting questions to the Bioconductor support site has a number of advantages. First, the support site includes a community of experienced edgeR users who can answer most common questions. Second, the edgeR authors try hard to ensure that any user posting to Bioconductor receives assistance. Third, the support site allows others with the same sort of questions to gain from the answers. Users posting to the support site for the first time will find it helpful to read the posting guide at <http://www.bioconductor.org/help/support/posting-guide>.

Note that each function in edgeR has its own online help page. For example, a detailed description of the arguments and output of the `exactTest` function can be read by typing `?exactTest` or `help(exactTest)` at the R prompt. If you have a question about any particular function, reading the function's help page will often answer the question very quickly. In any case, it is good etiquette to check the relevant help page first before posting a question to the support site.

The authors do occasionally answer questions posted to other forums, such as SEQAnswers or Biostar, but it is not possible to do this on a regular basis.

1.4 Quick start

edgeR offers many variants on analyses. The glm approach is more popular than the classic approach as it offers great flexibilities. There are two testing methods under the glm framework: likelihood ratio test and quasi-likelihood F-test. The quasi-likelihood method is highly recommended for differential expression analyses of bulk RNA-seq data as it gives stricter error rate control by accounting for the uncertainty in dispersion estimation. The likelihood ratio test can be useful in some special cases such as single cell RNA-seq and datasets with no replicates. The details of these methods are described in Chapter 2.

A typical edgeR analysis might look like the following. Here we assume there are four RNA-Seq libraries in two groups, and the counts are stored in a tab-delimited text file, with gene symbols in a column called `Symbol`.

```
> x <- read.delim("TableOfCounts.txt",row.names="Symbol")
> group <- factor(c(1,1,2,2))
> y <- DGEList(counts=x,group=group)
> y <- calcNormFactors(y)
> design <- model.matrix(~group)
> y <- estimateDisp(y,design)
```

To perform quasi-likelihood F-tests:

```
> fit <- glmQLFit(y,design)
> qlf <- glmQLFTest(fit,coef=2)
> topTags(qlf)
```

To perform likelihood ratio tests:

```
> fit <- glmFit(y,design)
> lrt <- glmLRT(fit,coef=2)
> topTags(lrt)
```

Chapter 2

Overview of capabilities

2.1 Terminology

edgeR performs differential abundance analysis for pre-defined genomic features. Although not strictly necessary, it is usually desirable that these genomic features are non-overlapping. For simplicity, we will henceforth refer to the genomic features as “genes”, although they could in principle be transcripts, exons, general genomic intervals or some other type of feature. For ChIP-seq experiments, abundance might relate to transcription factor binding or to histone mark occupancy, but we will henceforth refer to abundance as in terms of gene expression. In other words, the remainder of this guide will use terminology as for a gene-level analysis of an RNA-seq experiment, although the methodology is more widely applicable than that.

2.2 Aligning reads to a genome

The first step in an RNA-seq analysis is usually to align the raw sequence reads to a reference genome, although there are many variations on this process. Alignment needs to allow for the fact that reads may span multiple exons which may align to well separated locations on the genome. We find the subread-featureCounts pipeline [13, 14] to be very fast and effective for this purpose, but the Bowtie-TopHat-htseq pipeline is also very popular [1].

2.3 Producing a table of read counts

edgeR works on a table of integer read counts, with rows corresponding to genes and columns to independent libraries. The counts represent the total number of reads aligning to each gene (or other genomic locus).

Such counts can be produced from aligned reads by a variety of short read software tools. We find the `featureCounts` function of the Rsubread package [14] to be particularly effective

and convenient, but other tools are available such as `findOverlaps` in the `GenomicRanges` package or the Python software `htseq-counts`.

Reads can be counted in a number of ways. When conducting gene-level analyses, the counts could be for reads mapping anywhere in the genomic span of the gene or the counts could be for exons only. We usually count reads that overlap any exon for the given gene, including the UTR as part of the first exon [14].

For data from pooled shRNA-seq or CRISPR-Cas9 genetic screens, the `processAmplicons` function [7] can be used to obtain counts directly from fastq files.

Note that edgeR is designed to work with actual read counts. We not recommend that predicted transcript abundances are input the edgeR in place of actual counts.

2.4 Reading the counts from a file

If the table of counts has been written to a file, then the first step in any analysis will usually be to read these counts into an R session.

If the count data is contained in a single tab-delimited or comma-separated text file with multiple columns, one for each sample, then the simplest method is usually to read the file into R using one of the standard R read functions such as `read.delim`. See the quick start above, or the case study on LNCaP Cells, or the case study on oral carcinomas later in this guide for examples.

If the counts for different samples are stored in separate files, then the files have to be read separately and collated together. The edgeR function `readDGE` is provided to do this. Files need to contain two columns, one for the counts and one for a gene identifier.

2.5 The DGEList data class

edgeR stores data in a simple list-based data object called a `DGEList`. This type of object is easy to use because it can be manipulated like any list in R. The function `readDGE` makes a `DGEList` object directly. If the table of counts is already available as a matrix or a data.frame, `x` say, then a `DGEList` object can be made by

```
> y <- DGEList(counts=x)
```

A grouping factor can be added at the same time:

```
> group <- c(1,1,2,2)
> y <- DGEList(counts=x, group=group)
```

The main components of an `DGEList` object are a matrix `counts` containing the integer counts, a data.frame `samples` containing information about the samples or libraries, and a optional data.frame `genes` containing annotation for the genes or genomic features. The data.frame `samples` contains a column `lib.size` for the library size or sequencing depth for

each sample. If not specified by the user, the library sizes will be computed from the column sums of the counts. For classic edgeR the data.frame `samples` must also contain a column `group`, identifying the group membership of each sample.

2.6 Filtering

Genes with very low counts across all libraries provide little evidence for differential expression. In the biological point of view, a gene must be expressed at some minimal level before it is likely to be translated into a protein or to be biologically important. In addition, the pronounced discreteness of these counts interferes with some of the statistical approximations that are used later in the pipeline. These genes should be filtered out prior to further analysis.

As a rule of thumb, genes are dropped if they can't possibly be expressed in all the samples for any of the conditions. Users can set their own definition of genes being expressed. Usually a gene is required to have a count of 5-10 in a library to be considered expressed in that library. Users should also filter with count-per-million (CPM) rather than filtering on the counts directly, as the latter does not account for differences in library sizes between samples.

Here is a simple example. Suppose the sample information of a `DGEList` object `y` is shown as follows:

```
> y$samples
```

	group	lib.size	norm.factors
Sample1	1	10880519	1
Sample2	1	9314747	1
Sample3	1	11959792	1
Sample4	2	7460595	1
Sample5	2	6714958	1

We filter out lowly expressed genes using the following commands:

```
> keep <- rowSums(cpm(y)>1) >= 2
> y <- y[keep, , keep.lib.sizes=FALSE]
```

Here, a CPM of 1 corresponds to a count of 6-7 in the smallest sample. A requirement for expression in two or more libraries is used as the minimum number of samples in each group is two. This ensures that a gene will be retained if it is only expressed in both samples in group 2. It is also recommended to recalculate the library sizes of the `DGEList` object after the filtering though the difference is usually negligible.

2.7 Normalization

2.7.1 Normalization is only necessary for sample-specific effects

edgeR is concerned with differential expression analysis rather than with the quantification of expression levels. It is concerned with relative changes in expression levels between conditions, but not directly with estimating absolute expression levels. This greatly simplifies the technical influences that need to be taken into account, because any technical factor that is unrelated to the experimental conditions should cancel out of any differential expression analysis. For example, read counts can generally be expected to be proportional to length as well as to expression for any transcript, but edgeR does not generally need to adjust for gene length because gene length has the same relative influence on the read counts for each RNA sample. For this reason, normalization issues arise only to the extent that technical factors have sample-specific effects.

2.7.2 Sequencing depth

The most obvious technical factor that affects the read counts, other than gene expression levels, is the sequencing depth of each RNA sample. edgeR adjusts any differential expression analysis for varying sequencing depths as represented by differing library sizes. This is part of the basic modeling procedure and flows automatically into fold-change or p-value calculations. It is always present, and doesn't require any user intervention.

2.7.3 RNA composition

The second most important technical influence on differential expression is one that is less obvious. RNA-seq provides a measure of the relative abundance of each gene in each RNA sample, but does not provide any measure of the total RNA output on a per-cell basis. This commonly becomes important when a small number of genes are very highly expressed in one sample, but not in another. The highly expressed genes can consume a substantial proportion of the total library size, causing the remaining genes to be under-sampled in that sample. Unless this *RNA composition* effect is adjusted for, the remaining genes may falsely appear to be down-regulated in that sample [29].

The `calcNormFactors` function normalizes for RNA composition by finding a set of scaling factors for the library sizes that minimize the log-fold changes between the samples for most genes. The default method for computing these scale factors uses a trimmed mean of M-values (TMM) between each pair of samples [29]. We call the product of the original library size and the scaling factor the *effective library size*. The effective library size replaces the original library size in all downstream analyses.

TMM is the recommended for most RNA-Seq data where the majority (more than half) of the genes are believed not differentially expressed between any pair of the samples. The

following commands perform the TMM normalization and display the normalization factors.

```
> y <- calcNormFactors(y)
> y$samples
```

	group	lib.size	norm.factors
Sample1	1	10880519	1.17
Sample2	1	9314747	0.86
Sample3	1	11959792	1.32
Sample4	2	7460595	0.91
Sample5	2	6714958	0.83

The normalization factors of all the libraries multiply to unity. A normalization factor below one indicates that a small number of high count genes are monopolizing the sequencing, causing the counts for other genes to be lower than would be usual given the library size. As a result, the library size will be scaled down, analogous to scaling the counts upwards in that library. Conversely, a factor above one scales up the library size, analogous to downscaling the counts.

2.7.4 GC content

The GC-content of each gene does not change from sample to sample, so it can be expected to have little effect on differential expression analyses to a first approximation. Recent publications, however, have demonstrated that sample-specific effects for GC-content can be detected [27, 10]. The EDASeq [27] and cqn [10] packages estimate correction factors that adjust for sample-specific GC-content effects in a way that is compatible with edgeR. In each case, the observation-specific correction factors can be input into the glm functions of edgeR as an *offset* matrix.

2.7.5 Gene length

Like GC-content, gene length does not change from sample to sample, so it can be expected to have little effect on differential expression analyses. Nevertheless, sample-specific effects for gene length have been detected [10], although the evidence is not as strong as for GC-content.

2.7.6 Model-based normalization, not transformation

In edgeR, normalization takes the form of correction factors that enter into the statistical model. Such correction factors are usually computed internally by edgeR functions, but it is also possible for a user to supply them. The correction factors may take the form of scaling factors for the library sizes, such as computed by `calcNormFactors`, which are then used to compute the effective library sizes. Alternatively, gene-specific correction factors can be

entered into the glm functions of edgeR as offsets. In the latter case, the offset matrix will be assumed to account for all normalization issues, including sequencing depth and RNA composition.

Note that normalization in edgeR is model-based, and the original read counts are not themselves transformed. This means that users should not transform the read counts in any way before inputting them to edgeR. For example, users should not enter RPKM or FPKM values to edgeR in place of read counts. Such quantities will prevent edgeR from correctly estimating the mean-variance relationship in the data, which is a crucial to the statistical strategies underlying edgeR. Similarly, users should not add artificial values to the counts before inputting them to edgeR.

edgeR is not designed to work with estimated expression levels, for example as might be output by Cufflinks. edgeR can work with expected counts as output by RSEM, but raw counts are still preferred.

2.7.7 Pseudo-counts

The classic edgeR functions `estimateCommonDisp` and `exactTest` produce a matrix of *pseudo-counts* as part of the output object. The pseudo-counts are used internally to speed up computation of the conditional likelihood used for dispersion estimation and exact tests in the classic edgeR pipeline. The pseudo-counts represent the equivalent counts would have been observed had the library sizes all been equal, assuming the fitted model. The pseudo-counts are computed for a specific purpose, and their computation depends on the experimental design as well as the library sizes, so users are advised not to interpret the pseudo-counts as general-purpose normalized counts. They are intended mainly for internal use in the edgeR pipeline.

Disambiguation. Note that some other software packages use the term *pseudo-count* to mean something analogous to *prior counts* in edgeR, i.e., a starting value that is added to a zero count to avoid missing values when computing logarithms. In edgeR, a pseudo-count is a type of normalized count and a prior count is a starting value used to offset small counts.

2.8 Negative binomial models

2.8.1 Introduction

The starting point for an RNA-Seq experiment is a set of n RNA samples, typically associated with a variety of treatment conditions. Each sample is sequenced, short reads are mapped to the appropriate genome, and the number of reads mapped to each genomic feature of interest is recorded. The number of reads from sample i mapped to gene g will be denoted y_{gi} . The set of genewise counts for sample i makes up the expression profile or *library* for that sample. The expected size of each count is the product of the library size and the relative abundance of that gene in that sample.

2.8.2 Biological coefficient of variation (BCV)

RNA-Seq profiles are formed from n RNA samples. Let π_{gi} be the fraction of all cDNA fragments in the i th sample that originate from gene g . Let G denote the total number of genes, so $\sum_{g=1}^G \pi_{gi} = 1$ for each sample. Let $\sqrt{\phi_g}$ denote the coefficient of variation (CV) (standard deviation divided by mean) of π_{gi} between the replicates i . We denote the total number of mapped reads in library i by N_i and the number that map to the g th gene by y_{gi} . Then

$$E(y_{gi}) = \mu_{gi} = N_i \pi_{gi}.$$

Assuming that the count y_{gi} follows a Poisson distribution for repeated sequencing runs of the same RNA sample, a well known formula for the variance of a mixture distribution implies:

$$\text{var}(y_{gi}) = E_{\pi} [\text{var}(y|\pi)] + \text{var}_{\pi} [E(y|\pi)] = \mu_{gi} + \phi_g \mu_{gi}^2.$$

Dividing both sides by μ_{gi}^2 gives

$$\text{CV}^2(y_{gi}) = 1/\mu_{gi} + \phi_g.$$

The first term $1/\mu_{gi}$ is the squared CV for the Poisson distribution and the second is the squared CV of the unobserved expression values. The total CV^2 therefore is the technical CV^2 with which π_{gi} is measured plus the biological CV^2 of the true π_{gi} . In this article, we call ϕ_g the dispersion and $\sqrt{\phi_g}$ the biological CV although, strictly speaking, it captures all sources of the inter-library variation between replicates, including perhaps contributions from technical causes such as library preparation as well as true biological variation between samples.

Two levels of variation can be distinguished in any RNA-Seq experiment. First, the relative abundance of each gene will vary between RNA samples, due mainly to biological causes. Second, there is measurement error, the uncertainty with which the abundance of each gene in each sample is estimated by the sequencing technology. If aliquots of the same RNA sample are sequenced, then the read counts for a particular gene should vary according to a Poisson law [18]. If sequencing variation is Poisson, then it can be shown that the squared coefficient of variation (CV) of each count between biological replicate libraries is the sum of the squared CVs for technical and biological variation respectively,

$$\text{Total CV}^2 = \text{Technical CV}^2 + \text{Biological CV}^2.$$

Biological CV (BCV) is the coefficient of variation with which the (unknown) true abundance of the gene varies between replicate RNA samples. It represents the CV that would remain between biological replicates if sequencing depth could be increased indefinitely. The technical CV decreases as the size of the counts increases. BCV on the other hand does not. BCV is therefore likely to be the dominant source of uncertainty for high-count genes, so reliable estimation of BCV is crucial for realistic assessment of differential expression in

RNA-Seq experiments. If the abundance of each gene varies between replicate RNA samples in such a way that the genewise standard deviations are proportional to the genewise means, a commonly occurring property of measurements on physical quantities, then it is reasonable to suppose that BCV is approximately constant across genes. We allow however for the possibility that BCV might vary between genes and might also show a systematic trend with respect to gene expression or expected count.

The magnitude of BCV is more important than the exact probabilistic law followed by the true gene abundances. For mathematical convenience, we assume that the true gene abundances follow a gamma distributional law between replicate RNA samples. This implies that the read counts follow a negative binomial probability law.

2.8.3 Estimating BCVs

When a negative binomial model is fitted, we need to estimate the BCV(s) before we carry out the analysis. The BCV, as shown in the previous section, is the square root of the dispersion parameter under the negative binomial model. Hence, it is equivalent to estimating the dispersion(s) of the negative binomial model.

The parallel nature of sequencing data allows some possibilities for borrowing information from the ensemble of genes which can assist in inference about each gene individually. The easiest way to share information between genes is to assume that all genes have the same mean-variance relationship, in other words, the dispersion is the same for all the genes [31]. An extension to this “common dispersion” approach is to put a mean-dependent trend on a parameter in the variance function, so that all genes with the same expected count have the same variance.

However, the truth is that the gene expression levels have non-identical and dependent distribution between genes, which makes the above assumptions too naive. A more general approach that allows genewise variance functions with empirical Bayes moderation was introduced several years ago [30] and was extended to generalized linear models and thus more complex experimental designs [19]. Only when using tagwise dispersion will genes that are consistent between replicates be ranked more highly than genes that are not. It has been seen in many RNA-Seq datasets that allowing gene-specific dispersion is necessary in order that differential expression is not driven by outliers. Therefore, the tagwise dispersions are strongly recommended in model fitting and testing for differential expression.

In edgeR, we apply an empirical Bayes strategy for squeezing the tagwise dispersions towards a global dispersion trend or towards a common dispersion value. The amount of squeeze is determined by the weight given to the global value on one hand and the precision of the tagwise estimates on the other. The relative weights given to the two are determined the prior and residual degrees of freedom. By default, the prior degrees of freedom, which determines the amount of empirical Bayes moderation, is estimated by examining the heteroskedasticity of the data [5].

2.8.4 Quasi negative binomial

The NB model can be extended with quasi-likelihood (QL) methods to account for gene-specific variability from both biological and technical sources [17, 16]. Under the QL framework, the variance of the count y_{gi} is a quadratic function of the mean,

$$\text{var}(y_{gi}) = \sigma_g^2(\mu_{gi} + \phi\mu_{gi}^2),$$

where ϕ is the NB dispersion parameter and σ_g^2 is the QL dispersion parameter.

Any increase in the observed variance of y_{gi} will be modelled by an increase in the estimates for ϕ and/or σ_g^2 . In this model, the NB dispersion ϕ is a global parameter whereas the QL is gene-specific, so the two dispersion parameters have different roles. The NB dispersion describes the overall biological variability across all genes. It represents the observed variation that is attributable to inherent variability in the biological system, in contrast to the Poisson variation from sequencing. The QL dispersion picks up any gene-specific variability above and below the overall level.

The common NB dispersion for the entire data set can be used for the global parameter. In practice, we use the trended dispersions to account for the empirical mean-variance relationships. Since the NB dispersion under the QL framework reflects the overall biological variability, it does not make sense to use the tagwise dispersions.

Estimation of the gene-specific QL dispersion is difficult as most RNA-seq data sets have limited numbers of replicates. This means that there is often little information to stably estimate the dispersion for each gene. To overcome this, an empirical Bayes (EB) approach is used whereby information is shared between genes [33, 17, 24]. Briefly, a mean-dependent trend is fitted to the raw QL dispersion estimates. The raw estimates are then squeezed towards this trend to obtain moderated EB estimates, which can be used in place of the raw values for downstream hypothesis testing. This EB strategy reduces the uncertainty of the estimates and improves testing power.

2.9 Pairwise comparisons between two or more groups (classic)

2.9.1 Estimating dispersions

edgeR uses the quantile-adjusted conditional maximum likelihood (qCML) method for experiments with single factor.

Compared against several other estimators (e.g. maximum likelihood estimator, Quasi-likelihood estimator etc.) using an extensive simulation study, qCML is the most reliable in terms of bias on a wide range of conditions and specifically performs best in the situation of many small samples with a common dispersion, the model which is applicable to Next-Gen sequencing data. We have deliberately focused on very small samples due to the fact

that DNA sequencing costs prevent large numbers of replicates for SAGE and RNA-seq experiments.

The qCML method calculates the likelihood by conditioning on the total counts for each tag, and uses pseudo counts after adjusting for library sizes. Given a table of counts or a `DGEList` object, the qCML common dispersion and tagwise dispersions can be estimated using the `estimateDisp()` function. Alternatively, one can estimate the qCML common dispersion using the `estimateCommonDisp()` function, and then the qCML tagwise dispersions using the `estimateTagwiseDisp()` function.

However, the qCML method is only applicable on datasets with a single factor design since it fails to take into account the effects from multiple factors in a more complicated experiment. When an experiment has more than one factor involved, we need to seek a new way of estimating dispersions.

Here is a simple example of estimating dispersions using the qCML method. Given a `DGEList` object `y`, we estimate the dispersions using the following commands.

To estimate common dispersion and tagwise dispersions in one run (recommended):

```
y <- estimateDisp(y)
```

Alternatively, to estimate common dispersion:

```
y <- estimateCommonDisp(y)
```

Then to estimate tagwise dispersions:

```
y <- estimateTagwiseDisp(y)
```

Note that common dispersion needs to be estimated before estimating tagwise dispersions if they are estimated separately.

2.9.2 Testing for DE genes

For all the Next-Gen sequencing data analyses we consider here, people are most interested in finding differentially expressed genes/tags between two (or more) groups. Once negative binomial models are fitted and dispersion estimates are obtained, we can proceed with testing procedures for determining differential expression using the exact test.

The exact test is based on the qCML methods. Knowing the conditional distribution for the sum of counts in a group, we can compute exact p -values by summing over all sums of counts that have a probability less than the probability under the null hypothesis of the observed sum of counts. The exact test for the negative binomial distribution has strong parallels with Fisher's exact test.

As we discussed in the previous section, the exact test is only applicable to experiments with a single factor. The testing can be done by using the function `exactTest()`, and the function allows both common dispersion and tagwise dispersion approaches. For example:

```
> et <- exactTest(y)
> topTags(et)
```

2.10 More complex experiments (glm functionality)

2.10.1 Generalized linear models

Generalized linear models (GLMs) are an extension of classical linear models to nonnormally distributed response data [23, 21]. GLMs specify probability distributions according to their mean-variance relationship, for example the quadratic mean-variance relationship specified above for read counts. Assuming that an estimate is available for ϕ_g , so the variance can be evaluated for any value of μ_{gi} , GLM theory can be used to fit a log-linear model

$$\log \mu_{gi} = \mathbf{x}_i^T \boldsymbol{\beta}_g + \log N_i$$

for each gene [15, 4]. Here \mathbf{x}_i is a vector of covariates that specifies the treatment conditions applied to RNA sample i , and $\boldsymbol{\beta}_g$ is a vector of regression coefficients by which the covariate effects are mediated for gene g . The quadratic variance function specifies the negative binomial GLM distributional family. The use of the negative binomial distribution is equivalent to treating the π_{gi} as gamma distributed.

2.10.2 Estimating dispersions

For general experiments (with multiple factors), edgeR uses the Cox-Reid profile-adjusted likelihood (CR) method in estimating dispersions. The CR method is derived to overcome the limitations of the qCML method as mentioned above. It takes care of multiple factors by fitting generalized linear models (GLM) with a design matrix.

The CR method is based on the idea of approximate conditional likelihood which reduces to residual maximum likelihood. Given a table counts or a `DGEList` object and the design matrix of the experiment, generalized linear models are fitted. This allows valid estimation of the dispersion, since all systematic sources of variation are accounted for.

The CR method can be used to calculate a common dispersion for all the tags, trended dispersion depending on the tag abundance, or separate dispersions for individual tags. These can be done by calling the function `estimateDisp()` with a specified design. Alternatively, one can estimate the common, trended and tagwise dispersions separately using `estimateGLMCommonDisp()`, `estimateGLMTrendedDisp()` and `estimateGLMTagwiseDisp()`, respectively. The tagwise dispersion approach is strongly recommended in multi-factor experiment cases.

Here is a simple example of estimating dispersions using the GLM method. Given a `DGEList` object `y` and a design matrix, we estimate the dispersions using the following commands.

To estimate common dispersion, trended dispersions and tagwise dispersions in one run (recommended):

```
y <- estimateDisp(y, design)
```

Alternatively, one can use the following calling sequence to estimate them one by one. To estimate common dispersion:

```
y <- estimateGLMCommonDisp(y, design)
```

To estimate trended dispersions:

```
y <- estimateGLMTrendedDisp(y, design)
```

To estimate tagwise dispersions:

```
y <- estimateGLMTagwiseDisp(y, design)
```

Note that we need to estimate either common dispersion or trended dispersions prior to the estimation of tagwise dispersions. When estimating tagwise dispersions, the empirical Bayes method is applied to squeeze the tagwise dispersions towards a common dispersion or towards trended dispersions, whichever exists. If both exist, the default is to use the trended dispersions.

For more detailed examples, see the case study in section 4.1 (Tuch's data), section 4.2 (arabidopsis data), section 4.3 (Nigerian data) and section 4.4 (Fu's data).

2.10.3 Testing for DE genes

For general experiments, once dispersion estimates are obtained and negative binomial generalized linear models are fitted, we can proceed with testing procedures for determining differential expression using either quasi-likelihood (QL) F-test or likelihood ratio test.

While the likelihood ratio test is a more obvious choice for inferences with GLMs, the QL F-test is preferred as it reflects the uncertainty in estimating the dispersion for each gene. It provides more robust and reliable error rate control when the number of replicates is small. The QL dispersion estimation and hypothesis testing can be done by using the functions `glmQLFit()` and `glmQLFTest()`.

Given raw counts, NB dispersion(s) and a design matrix, `glmQLFit()` fits the negative binomial GLM for each tag and produces an object of class `DGEGLM` with some new components. This `DGEGLM` object can then be passed to `glmQLFTest()` to carry out the QL F-test. User can select one or more coefficients to drop from the full design matrix. This gives the null model against which the full model is compared. Tags can then be ranked in order of evidence for differential expression, based on the p -value computed for each tag.

As a brief example, consider a situation in which are three treatment groups, each with two replicates, and the researcher wants to make pairwise comparisons between them. A QL model representing the study design can be fitted to the data with commands such as:

```
> group <- factor(c(1,1,2,2,3,3))
> design <- model.matrix(~group)
> fit <- glmQLFit(y, design)
```

The fit has three parameters. The first is the baseline level of group 1. The second and third are the 2 vs 1 and 3 vs 1 differences.

To compare 2 vs 1:

```
> qlf.2vs1 <- glmQLFTest(fit, coef=2)
> topTags(qlf.2vs1)
```

To compare 3 vs 1:

```
> qlf.3vs1 <- glmQLFTest(fit, coef=3)
```

To compare 3 vs 2:

```
> qlf.3vs2 <- glmQLFTest(fit, contrast=c(0,-1,1))
```

The contrast argument in this case requests a statistical test of the null hypothesis that coefficient3−coefficient2 is equal to zero.

To find genes different between any of the three groups:

```
> qlf <- glmQLFTest(fit, coef=2:3)
> topTags(qlf)
```

For more detailed examples, see the case study in section 4.2 (arabidopsis data), section 4.3 (Nigerian data) and section 4.4 (Fu’s data).

Alternatively, one can perform likelihood ratio test to test for differential expression. The testing can be done by using the functions `glmFit()` and `glmLRT()`. To apply the likelihood ratio test to the above example and compare 2 vs 1:

```
> fit <- glmFit(y, design)
> lrt.2vs1 <- glmLRT(fit, coef=2)
> topTags(lrt.2vs1)
```

Similarly for the other comparisons.

For more detailed examples, see the case study in section 4.1 (Tuch’s data)

2.11 What to do if you have no replicates

edgeR is primarily intended for use with data including biological replication. Nevertheless, RNA-Seq and ChIP-Seq are still expensive technologies, so it sometimes happens that only one library can be created for each treatment condition. In these cases there are no replicate libraries from which to estimate biological variability. In this situation, the data analyst is faced with the following choices, none of which are ideal. We do not recommend any of these choices as a satisfactory alternative for biological replication. Rather, they are the best that can be done at the analysis stage, and options 2–4 may be better than assuming that biological variability is absent.

1. Be satisfied with a descriptive analysis, that might include an MDS plot and an analysis of fold changes. Do not attempt a significance analysis. This may be the best advice.
2. Simply pick a reasonable dispersion value, based on your experience with similar data, and use that for `exactTest` or `glmFit`. Typical values for the common BCV (square-root-dispersion) for datasets arising from well-controlled experiments are 0.4 for human data, 0.1 for data on genetically identical model organisms or 0.01 for technical replicates. Here is a toy example with simulated data:

```
> bcv <- 0.2
> counts <- matrix( rnbinom(40,size=1/bcv^2,mu=10), 20,2)
> y <- DGEList(counts=counts, group=1:2)
> et <- exactTest(y, dispersion=bcv^2)
```

Note that the p-values obtained and the number of significant genes will be very sensitive to the dispersion value chosen, and be aware that less well controlled datasets, with unaccounted-for batch effects and so on, could have in reality much larger dispersions than are suggested here. Nevertheless, choosing a nominal dispersion value may be more realistic than ignoring biological variation entirely.

3. Remove one or more explanatory factors from the linear model in order to create some residual degrees of freedom. Ideally, this means removing the factors that are least important but, if there is only one factor and only two groups, this may mean removing the entire design matrix or reducing it to a single column for the intercept. If your experiment has several explanatory factors, you could remove the factor with smallest fold changes. If your experiment has several treatment conditions, you could try treating the two most similar conditions as replicates. Estimate the dispersion from this reduced model, then insert these dispersions into the data object containing the full design matrix, then proceed to model fitting and testing with `glmFit` and `glmLRT`. This approach will only be successful if the number of DE genes is relatively small.

In conjunction with this reduced design matrix, you could try `estimateGLMCommonDisp` with `method="deviance"`, `robust=TRUE` and `subset=NULL`. This is our current best attempt at an automatic method to estimate dispersion without replicates, although it will only give good results when the counts are not too small and the DE genes are a small proportion of the whole. Please understand that this is only our best attempt to return something useable. Reliable estimation of dispersion generally requires replicates.

4. If there exist a sizeable number of control transcripts that should not be DE, then the dispersion could be estimated from them. For example, suppose that `housekeeping` is an index variable identifying housekeeping genes that do not respond to the treatment used in the experiment. First create a copy of the data object with only one treatment group:


```
> y1 <- y
> y1$samples$group <- 1
```

Then estimate the common dispersion from the housekeeping genes and all the libraries as one group:

```
> y0 <- estimateDisp(y1[housekeeping,], trend="none", tagwise=FALSE)
```

Then insert this into the full data object and proceed:

```
> y$common.dispersion <- y0$common.dispersion
> fit <- glmFit(y, design)
> lrt <- glmLRT(fit)
```

and so on. A reasonably large number of control transcripts is required, at least a few dozen and ideally hundreds.

2.12 Differential expression above a fold-change threshold

All the above testing methods identify differential expression based on statistical significance regardless of how small the difference might be. On the other hand, one might be more interested in studying genes of which the expression levels change by a certain amount. A commonly used approach is to conduct DE tests, apply a fold-change cut-off and then rank all the genes above that fold-change threshold by p -value. In some other cases genes are first chosen according to a p -value cut-off and then sorted by their fold-changes. These combinations of p -value and fold-change threshold criteria seem to give more biological meaningful sets of genes than using either of them alone. However, they are both *ad hoc* and do not give meaningful p -values for testing differential expressions relative to a fold-change threshold. They favour lowly expressed but highly variable genes and destroy the control of FDR in general.

edgeR offers a rigorous statistical test for thresholded hypotheses under the GLM framework. It is analogous to TREAT [20] but much more powerful than the original TREAT method. Given a fold-change (or log-fold-change) threshold, the thresholded testing can be done by calling the function `glmTreat()` on a `DGEGLM` object produced by either `glmFit()` or `glmQLFit()`.

In the example shown in section 2.10.3, suppose we are detecting genes of which the log2-fold-changes for 1 vs 2 are significantly greater than 1, i.e., fold-changes significantly greater than 2, we use the following commands:

```
> fit <- glmQLFit(y, design)
> tr <- glmTreat(fit, coef=2, lfc=1)
> topTags(tr)
```

Note that the fold-change threshold in `glmTreat()` is not the minimum value of the fold-change expected to see from the testing results. Genes will need to exceed this threshold by some way before being declared statistically significant. It is better to interpret the threshold as “the fold-change below which we are definitely not interested in the gene” rather than “the fold-change above which we are interested in the gene”. In the presence of a huge number of DE genes, a relatively large fold-change threshold may be appropriate to narrow down the search to genes of interest. In the lack of DE genes, on the other hand, a small or even no fold-change threshold shall be used.

For more detailed examples, see the case study in section 4.4 (Fu’s data).

2.13 Gene ontology (GO) and pathway analysis

The gene ontology (GO) enrichment analysis and the KEGG pathway enrichment analysis are the common downstream procedures to interpret the differential expression results in a biological context. Given a set of genes that are up- or down-regulated under a certain contrast of interest, a GO (or pathway) enrichment analysis will find which GO terms (or pathways) are over- or under-represented using annotations for the genes in that set.

The GO analysis can be performed using the `goana()` function in `edgeR`. The KEGG pathway analysis can be performed using the `kegga()` function in `edgeR`. Both `goana()` and `kegga()` take a `DGELRT` or `DGEEExact` object. They both use the NCBI RefSeq annotation. Therefore, the Entrez Gene identifier (ID) should be supplied for each gene as the row names of the input object. Also users should set `species` according to the organism being studied. The top set of most enriched GO terms can be viewed with the `topGO()` function, and the top set of most enriched KEGG pathways can be viewed with the `topKEGG()` function.

Suppose we want to identify GO terms and KEGG pathways that are over-represented in group 2 compared to group 1 from the previous example in section 2.10.3 assuming the samples are collected from mice. We use the following commands:

```
> qlf <- glmQLFTest(fit, coef=2)
> go <- goana(qlf, species="Mm")
> topGO(go, sort="up")
> keg <- kegga(qlf, species="Mm")
> topKEGG(keg, sort="up")
```

For more detailed examples, see the case study in section 4.1 (Tuch’s data) and section 4.4 (Fu’s data).

2.14 Gene set testing

In addition to the GO and pathway analysis, `edgeR` offers different types of gene set tests for RNA-Seq data. These gene set tests are the extensions of the original gene set tests in `limma` in order to handle `DGEList` objects.

The `roast()` function performs ROAST gene set tests [36]. It is a self-contained gene set test. Given a gene set, it tests whether the majority of the genes in the set are DE across the comparison of interest.

The `mroast()` function does ROAST tests for multiple sets, including adjustment for multiple testing.

The `fry()` function is a fast version of `mroast()`. It assumes all the genes in a set have equal variances. Since edgeR uses the z-score equivalents of NB random deviates for the gene set tests, the above assumption is always met. Hence, `fry()` is recommended over `roast()` and `mroast()` in edgeR. It gives the same result as `mroast()` with an infinite number of rotations.

The `camera()` function performs a competitive gene set test accounting for inter-gene correlation. It tests whether a set of genes is highly ranked relative to other genes in terms of differential expression [37].

The `romer()` function performs a gene set enrichment analysis. It implements a GSEA approach [34] based on rotation instead of permutation.

Unlike `goana()` and `kegga()`, the gene set tests are not limited to GO terms or KEGG pathways. Any pre-defined gene set can be used, for example MSigDB gene sets. A common application is to use a set of DE genes that was defined from an analysis of an independent data set.

For more detailed examples, see the case study in section 4.3 (Nigerian's data) and section 4.4 (Fu's data).

2.15 Clustering, heatmaps etc

The function `plotMDS` draws a multi-dimensional scaling plot of the RNA samples in which distances correspond to leading log-fold-changes between each pair of RNA samples. The leading log-fold-change is the average (root-mean-square) of the largest absolute log-fold-changes between each pair of samples. This plot can be viewed as a type of unsupervised clustering. The function also provides the option of computing distances in terms of BCV between each pair of samples instead of leading logFC.

Inputting RNA-seq counts to clustering or heatmap routines designed for microarray data is not straight-forward, and the best way to do this is still a matter of research. To draw a heatmap of individual RNA-seq samples, we suggest using moderated log-counts-per-million. This can be calculated by `cpm` with positive values for `prior.count`, for example

```
> logcpm <- cpm(y, prior.count=2, log=TRUE)
```

where `y` is the normalized `DGEList` object. This produces a matrix of \log_2 counts-per-million (logCPM), with undefined values avoided and the poorly defined log-fold-changes for low counts shrunk towards zero. Larger values for `prior.count` produce stronger moderation of the values for low counts and more shrinkage of the corresponding log-fold-changes. The

logCPM values can optionally be converted to RPKM or FPKM by subtracting \log_2 of gene length, see `rpkm()`.

2.16 Alternative splicing

edgeR can also be used to analyze RNA-Seq data at the exon level to detect differential splicing or isoform-specific differential expression. Alternative splicing events are detected by testing for differential exon usage for each gene, that is testing whether the log-fold-changes differ between exons for the same gene.

Both exon-level and gene-level tests can be performed simultaneously using the `diffSpliceDGE()` function in edgeR. The exon-level test tests for the significant difference between the exon's logFC and the overall logFC for the gene. Two testing methods at the gene-level are provided. The first is to conduct a gene-level statistical test using the exon-level test statistics. Whether it is a likelihood ratio test or a QL F-test depends on the pipeline chosen. The second is to convert the exon-level p -values into a genewise p -value by the Simes' method. The first method is likely to be powerful for genes in which several exons are differentially spliced. The Simes' method is likely to be more powerful when only a minority of the exons for a gene are differentially spliced.

The top set of most significant spliced genes can be viewed by the `topSpliceDGE()` function. The exon-level testing results for a gene of interest can be visualized by the `plotSpliceDGE()` function.

For more detailed examples, see the case study in section 4.5 (Pasilla's data).

2.17 CRISPR-Cas9 and shRNA-seq screen analysis

edgeR can also be used to analyze data from CRISPR-Cas9 and shRNA-seq genetic screens as described in Dai *et al.* (2014) [7]. Screens of this kind typically involve the comparison of two or more cell populations either in the presence or absence of a selective pressure, or as a time-course before and after a selective pressure is applied. The goal is to identify sgRNAs (or shRNAs) whose representation changes (either increases or decreases) suggesting that disrupting the target gene's function has an effect on the cell.

To begin, the `processAmplicons` function can be used to obtain counts for each sgRNA (or shRNA) in the screen in each sample and organise them in a `DGEList` for down-stream analysis using either the classic edgeR or GLM pipeline mentioned above. Next, gene set testing methods such as `camera` and `roast` can be used to summarize results from multiple sgRNAs or shRNAs targeting the same gene to obtain gene-level results.

For a detailed example, see the case study in section 4.6 (CRISPR-Cas9 knockout screen analysis).

2.18 Bisulfite sequencing and differential methylation analysis

edgeR can also be used to analyze DNA methylation data generated from bisulfite sequencing technology. A DNA methylation study often involves comparing methylation levels at various genomic regions (eg. CpG sites) between different experimental groups. Differential methylation analyses can be performed in edgeR for both whole genome bisulfite sequencing (WGBS) and reduced representation bisulfite sequencing (RRBS). This is done by considering the observed read counts of both methylated and unmethylated CpG's across all the samples. Extra coefficients are added to the design matrix to represent the methylation levels and the differences of the methylation levels between groups.

For a detailed example, see the case study in section 4.7 (Bisulfite sequencing of mouse oocytes).

Chapter 3

Specific experimental designs

3.1 Introduction

In this chapter, we outline the principles for setting up the design matrix and forming contrasts for some typical experimental designs.

Throughout this chapter we will assume that the read alignment, normalization and dispersion estimation steps described in the previous chapter have already been completed. We will assume that a `DGEList` object `y` has been created containing the read counts, library sizes, normalization factors and dispersion estimates.

3.2 Two or more groups

3.2.1 Introduction

The simplest and most common type of experimental design is that in which a number of experimental conditions are compared on the basis of independent biological replicates of each condition. Suppose that there are three experimental conditions to be compared, treatments A, B and C, say. The `samples` component of the `DGEList` data object might look like:

```
> y$samples
      group lib.size norm.factors
sample.1   A   100001           1
sample.2   A   100002           1
sample.3   B   100003           1
sample.4   B   100004           1
sample.5   C   100005           1
```

Note that it is not necessary to have multiple replicates for all the conditions, although it is usually desirable to do so. By default, the conditions will be listed in alphabetical order, regardless of the order that the data were read:

```
> levels(y$samples$group)
[1] "A" "B" "C"
```

3.2.2 Classic approach

The classic edgeR approach is to make pairwise comparisons between the groups. For example,

```
> et <- exactTest(y, pair=c("A","B"))
> topTags(et)
```

will find genes differentially expressed (DE) in B vs A. Similarly

```
> et <- exactTest(y, pair=c("A","C"))
```

for C vs A, or

```
> et <- exactTest(y, pair=c("C","B"))
```

for B vs C.

Alternatively, the conditions to be compared can be specified by number, so that

```
> et <- exactTest(y, pair=c(3,2))
```

is equivalent to `pair=c("C","B")`, given that the second and third levels of `group` are B and C respectively.

Note that the levels of `group` are in alphabetical order by default, but can be easily changed. Suppose for example that C is a control or reference level to which conditions A and B are to be compared. Then one might redefine the group levels, in a new data object, so that C is the first level:

```
> y2 <- y
> y2$samples$group <- relevel(y2$samples$group, ref="C")
> levels(y2$samples$group)
[1] "C" "A" "B"
```

Now

```
> et <- exactTest(y2, pair=c("A","B"))
```

would still compare B to A, but

```
> et <- exactTest(y2, pair=c(1,2))
```

would now compare A to C.

When `pair` is not specified, the default is to compare the first two group levels, so

```
> et <- exactTest(y)
```

compares B to A, whereas

```
> et <- exactTest(y2)
```

compares A to C.

3.2.3 GLM approach

The glm approach to multiple groups is similar to the classic approach, but permits more general comparisons to be made. The glm approach requires a design matrix to describe the treatment conditions. We will usually use the `model.matrix` function to construct the design matrix, although it could be constructed manually. There are always many equivalent ways to define this matrix. Perhaps the simplest way is to define a coefficient for the expression level of each group:

```
> design <- model.matrix(~0+group, data=y$samples)
> colnames(design) <- levels(y$samples$group)
> design
      A B C
sample.1 1 0 0
sample.2 1 0 0
sample.3 0 1 0
sample.4 0 1 0
sample.5 0 0 1
```

Here, the `0+` in the model formula is an instruction not to include an intercept column and instead to include a column for each group.

One can compare any of the treatment groups using the `contrast` argument of the `glmQLFTest` or `glmLRT` function. For example,

```
> fit <- glmQLFit(y, design)
> qlf <- glmQLFTest(fit, contrast=c(-1,1,0))
> topTags(qlf)
```

will compare B to A. The meaning of the contrast is to make the comparison $-1*A + 1*B + 0*C$, which is of course simply $B-A$.

The contrast vector can be constructed using `makeContrasts` if that is convenient. The above comparison could have been made by

```
> BvsA <- makeContrasts(B-A, levels=design)
> qlf <- glmQLFTest(fit, contrast=BvsA)
```

One could make three pairwise comparisons between the groups by

```
> my.contrasts <- makeContrasts(BvsA=B-A, CvsB=C-B, CvsA=A-C, levels=design)
> qlf.BvsA <- glmQLFTest(fit, contrast=my.contrasts[, "BvsA"])
> topTags(qlf.BvsA)
> qlf.CvsB <- glmQLFTest(fit, contrast=my.contrasts[, "CvsB"])
> topTags(qlf.CvsB)
> qlf.CvsA <- glmQLFTest(fit, contrast=my.contrasts[, "CvsA"])
> topTags(qlf.CvsA)
```

which would compare B to A, C to B and C to A respectively.

Any comparison can be made. For example,


```
> qlf <- glmQLFTest(fit, contrast=c(-0.5,-0.5,1))
```

would compare C to the average of A and B. Alternatively, this same contrast could have been specified by

```
> my.contrast <- makeContrasts(C-(A+B)/2, levels=design)
> qlf <- glmQLFTest(fit, contrast=my.contrast)
```

with the same results.

3.2.4 Questions and contrasts

The glm approach allows an infinite variety of contrasts to be tested between the groups. This embarrassment of riches leads to the question, which specific contrasts should we test? This answer is that we should form and test those contrasts that correspond to the scientific questions that we want to answer. Each statistical test is an answer to a particular question, and we should make sure that our questions and answers match up.

To clarify this a little, we will consider a hypothetical experiment with four groups. The groups correspond to four different types of cells: white and smooth, white and furry, red and smooth and red furry. We will think of white and red as being the major group, and smooth and furry as being a sub-grouping. Suppose the RNA samples look like this:

Sample	Color	Type	Group
1	White	Smooth	A
2	White	Smooth	A
3	White	Furry	B
4	White	Furry	B
5	Red	Smooth	C
6	Red	Smooth	C
7	Red	Furry	D
8	Red	Furry	D

To decide which contrasts should be made between the four groups, we need to be clear what are our scientific hypotheses. In other words, what are we seeking to show?

First, suppose that we wish to find genes that are always higher in red cells than in white cells. Then we will need to form the four contrasts C-A, C-B, D-A and D-B, and select genes that are significantly up for all four contrasts.

Or suppose we wish to establish that the difference between Red and White is large compared to the differences between Furry and Smooth. An efficient way to establish this would be to form the three contrasts B-A, D-C and $(C+D)/2-(A+B)/2$. We could confidently make this assertion for genes for which the third contrast is far more significant than the first two. Even if B-A and D-C are statistically significant, we could still look for genes for which the fold changes for $(C+D)/2-(A+B)/2$ are much larger than those for B-A or D-C.

We might want to find genes that are more highly expressed in Furry cells regardless of color. Then we would test the contrasts $B-A$ and $D-C$, and look for genes that are significantly up for both contrasts.

Or we want to assert that the difference between Furry over Smooth is much the same regardless of color. In that case you need to show that the contrast $(B+D)/2-(A+C)/2$ (the average Furry effect) is significant for many genes but that $(D-C)-(B-A)$ (the interaction) is not.

3.2.5 A more traditional glm approach

A more traditional way to create a design matrix in R is to include an intercept term that represents the first level of the factor. We included $0+$ in our model formula above. Had we omitted it, the design matrix would have had the same number of columns as above, but the first column would be the intercept term and the meanings of the second and third columns would change:

```
> design <- model.matrix(~group, data=y$samples)
> design
      (Intercept) groupB groupC
sample.1         1      0      0
sample.2         1      0      0
sample.3         1      1      0
sample.4         1      1      0
sample.5         1      0      1
```

Now the first coefficient will measure the baseline logCPM expression level in the first treatment condition (here group A), and the second and third columns are relative to the baseline. Here the second and third coefficients represent B vs A and C vs A respectively. In other words, `coef=2` now means $B-A$ and `coef=3` means $C-A$, so

```
> fit <- glmQLFit(y, design)
> qlf <- glmQLFTest(fit, coef=2)
```

would test for differential expression in B vs A . and

```
> qlf <- glmQLFTest(fit, coef=3)
```

would test for differential expression in C vs A .

This parametrization makes good sense when the first group represents a reference or control group, as all comparison are made with respect to this condition. If we releveled the factor to make level C the first level (see Section 3.2.2), then the design matrix becomes:

```
> design2 <- model.matrix(~group, data=y2$samples)
> design2
      (Intercept) groupA groupB
sample.1         1      1      0
sample.2         1      1      0
```

sample.3	1	0	1
sample.4	1	0	1
sample.5	1	0	0

Now

```
> fit2 <- glmQLFit(y2, design2)
> qlf <- glmQLFTest(fit2, coef=2)
```

compares A to C, and

```
> qlf <- glmQLFTest(fit2, coef=3)
```

compares B to C. With this parametrization, one could still compare B to A using

```
> qlf <- glmQLFTest(fit2, contrast=c(0,-1,1))
```

Note that

```
> qlf <- glmQLFTest(fit2, coef=1)
```

should not be used. It would test whether the first coefficient is zero, but it is not meaningful to compare the logCPM in group A to zero.

3.2.6 An ANOVA-like test for any differences

It might be of interest to find genes that are DE between any of the groups, without specifying before-hand which groups might be different. This is analogous to a one-way ANOVA test. In edgeR, this is done by specifying multiple coefficients to `glmQLFTest` or `glmLRT`, when the design matrix includes an intercept term. For example, with `fit` as defined in the previous section,

```
> qlf <- glmQLFTest(fit, coef=2:3)
> topTags(qlf)
```

will find any genes that differ between any of the treatment conditions A, B or C. Technically, this procedure tests whether either of the contrasts B-A or C-A are non-zero. Since at least one of these must be non-zero when differences exist, the test will detect any differences. To have this effect, the `coef` argument should specify all the coefficients except the intercept.

Note that this approach does not depend on how the group factor was defined, or how the design matrix was formed, as long as there is an intercept column. For example

```
> qlf <- glmQLFTest(fit2, coef=2:3)
```

gives exactly the same results, even though `fit2` and `fit` were computed using different design matrices. Here `fit2` is as defined in the previous section.

3.3 Experiments with all combinations of multiple factors

3.3.1 Defining each treatment combination as a group

We now consider experiments with more than one experimental factor, but in which every combination of experiment conditions can potentially have a unique effect. For example, suppose that an experiment has been conducted with an active drug and a placebo, at three times from 0 hours to 2 hours, with all samples obtained from independent subjects. The data frame `targets` describes the treatment conditions applied to each sample:

```
> targets
      Treat Time
Sample1 Placebo 0h
Sample2 Placebo 0h
Sample3 Placebo 1h
Sample4 Placebo 1h
Sample5 Placebo 2h
Sample6 Placebo 2h
Sample7   Drug 0h
Sample8   Drug 0h
Sample9   Drug 1h
Sample10  Drug 1h
Sample11  Drug 2h
Sample12  Drug 2h
```

As always, there are many ways to setup a design matrix. A simple, multi-purpose approach is to combine all the experimental factors into one combined factor:

```
> Group <- factor(paste(targets$Treat,targets$Time,sep="."))
> cbind(targets,Group=Group)
      Treat Time      Group
Sample1 Placebo 0h Placebo.0h
Sample2 Placebo 0h Placebo.0h
Sample3 Placebo 1h Placebo.1h
Sample4 Placebo 1h Placebo.1h
Sample5 Placebo 2h Placebo.2h
Sample6 Placebo 2h Placebo.2h
Sample7   Drug 0h   Drug.0h
Sample8   Drug 0h   Drug.0h
Sample9   Drug 1h   Drug.1h
Sample10  Drug 1h   Drug.1h
Sample11  Drug 2h   Drug.2h
Sample12  Drug 2h   Drug.2h
```

Then we can take the same approach as in the previous section on two or more groups. Each treatment time for each treatment drug is a group:

```
> design <- model.matrix(~0+Group)
> colnames(design) <- levels(Group)
> fit <- glmQLFit(y, design)
```

Then we can make any comparisons we wish. For example, we might wish to make the following contrasts:

```
> my.contrasts <- makeContrasts(
+     Drug.1vs0 = Drug.1h-Drug.0h,
+     Drug.2vs0 = Drug.2h-Drug.0h,
+     Placebo.1vs0 = Placebo.1h-Placebo.0h,
+     Placebo.2vs0 = Placebo.2h-Placebo.0h,
+     DrugvsPlacebo.0h = Drug.0h-Placebo.0h,
+     DrugvsPlacebo.1h = (Drug.1h-Drug.0h)-(Placebo.1h-Placebo.0h),
+     DrugvsPlacebo.2h = (Drug.2h-Drug.0h)-(Placebo.2h-Placebo.0h),
+ levels=design)
```

To find genes responding to the drug at 1 hour:

```
> qlf <- glmQLFTest(fit, contrast=my.contrasts[, "Drug.1vs0"])
```

or at 2 hours:

```
> qlf <- glmQLFTest(fit, contrast=my.contrasts[, "Drug.2vs0"])
```

To find genes with baseline differences between the drug and the placebo at 0 hours:

```
> qlf <- glmQLFTest(fit, contrast=my.contrasts[, "DrugvsPlacebo.0h"])
```

To find genes that have responded *differently* to the drug and the placebo at 2 hours:

```
> qlf <- glmQLFTest(fit, contrast=my.contrasts[, "DrugvsPlacebo.2h"])
```

Of course, it is not compulsory to use `makeContrasts` to form the contrasts. The coefficients are the following:

```
> colnames(fit)
[1] "Drug.0h"    "Drug.1h"    "Drug.2h"    "Placebo.0h" "Placebo.1h" "Placebo.2h"
```

so

```
> qlf <- glmQLFTest(fit, contrast=c(-1,0,1,0,0,0))
```

would find the `Drug.2vs0` contrast, and

```
> qlf <- glmQLFTest(fit, contrast=c(-1,0,1,1,0,-1))
```

is another way of specifying the `DrugvsPlacebo.2h` contrast.

3.3.2 Nested interaction formulas

We generally recommend the approach of the previous section, because it is so explicit and easy to understand. However it may be useful to be aware of more short-hand approach to form the same contrasts in the previous section using a model formula. First, make sure that the placebo is the reference level:

```
> targets$Treat <- relevel(targets$Treat, ref="Placebo")
```

Then form the design matrix:

```
> design <- model.matrix(~Treat + Treat:Time, data=targets)
> fit <- glmQLFit(y, design)
```

The meaning of this formula is to consider all the levels of time for each treatment drug separately. The second term is a nested interaction, the interaction of Time within Treat. The coefficient names are:

```
> colnames(fit)
[1] "(Intercept)"          "TreatDrug"
[3] "TreatPlacebo:Time1h"  "TreatDrug:Time1h"
[5] "TreatPlacebo:Time2h"  "TreatDrug:Time2h"
```

Now most of the above contrasts are directly available as coefficients:

```
> qlf <- glmQLFTest(fit, coef=2)
```

is the baseline drug vs placebo comparison,

```
> qlf <- glmQLFTest(fit, coef=4)
```

is the drug effect at 1 hour,

```
> qlf <- glmQLFTest(fit, coef=6)
```

is the drug effect at 2 hours, and finally

```
> qlf <- glmQLFTest(fit, contrast=c(0,0,0,0-1,1))
```

is the DrugvsPlacebo.2h contrast.

3.3.3 Treatment effects over all times

The nested interaction model makes it easy to find genes that respond to the treatment at any time, in a single test. Continuing the above example,

```
> qlf <- glmQLFTest(fit, coef=c(4,6))
```

finds genes that respond to the treatment at either 1 hour or 2 hours versus the 0 hour baseline. This is analogous to an ANOVA F -test for a normal linear model.

3.3.4 Interaction at any time

The full interaction formula is

```
> design <- model.matrix(~Treat * Time, data=targets)
```

which is equivalent to

```
> design <- model.matrix(~Treat + Time + Treat:Time, data=targets)
> fit <- glmQLFit(y, design)
```

This formula is primarily useful as a way to conduct an overall test for interaction. The coefficient names are:

```
> colnames(design)
[1] "(Intercept)"      "TreatDrug"
[3] "Time1h"           "Time2h"
[5] "TreatDrug:Time1h" "TreatDrug:Time2h"
```

Now

```
> qlf <- glmQLFTest(fit, coef=2)
```

is again the baseline drug vs placebo comparison, but

```
> qlf <- glmQLFTest(fit, coef=3)
```

and

```
> qlf <- glmQLFTest(fit, coef=4)
```

are the effects of the reference drug, i.e., the effects of the placebo at 1 hour and 2 hours. The last two coefficients give the `DrugvsPlacebo.1h` and `DrugvsPlacebo.2h` contrasts, so that

```
> qlf <- glmQLFTest(fit, coef=5:6)
```

is useful because it detects genes that respond *differently* to the drug, relative to the placebo, at either of the times.

3.4 Additive models and blocking

3.4.1 Paired samples

Paired samples occur whenever we compare two treatments and each independent subject in the experiment receives both treatments. Suppose for example that an experiment is conducted to compare a new treatment (T) with a control (C). Suppose that both the control and the treatment are administered to each of three patients. This produces the sample data:

FileName	Subject	Treatment
File1	1	C
File2	1	T
File3	2	C
File4	2	T
File5	3	C
File6	3	T

This is a paired design in which each subject receives both the control and the active treatment. We can therefore compare the treatment to the control for each patient separately, so that baseline differences between the patients are subtracted out.

The design matrix is formed from an additive model formula without an interaction term:

```
> Subject <- factor(targets$Subject)
> Treat <- factor(targets$Treatment, levels=c("C","T"))
> design <- model.matrix(~Subject+Treat)
```

The omission of an interaction term is characteristic of paired designs. We are not interested in the effect of the treatment on an individual patient (which is what an interaction term would examine). Rather we are interested in the average effect of the treatment over a population of patients.

As always, the dispersion has to be estimated:

```
> y <- estimateDisp(y,design)
```

We proceed to fit a linear model and test for the treatment effect. Note that we can omit the `coef` argument to `glmQLFTest` because the treatment effect is the last coefficient in the model.

```
> fit <- glmQLFit(y, design)
> qlf <- glmQLFTest(fit)
> topTags(qlf)
```

This test detects genes that are differentially expressed in response to the active treatment compared to the control, adjusting for baseline differences between the patients. This test can be viewed as a generalization of a paired *t*-test.

See the oral carcinomas case study of Section 4.1 for a fully worked analysis with paired samples.

3.4.2 Blocking

Paired samples are a simple example of what is called “blocking” in experimental design. The idea of blocking is to compare treatments using experimental subjects that are as similar as possible, so that the treatment difference stands out as clearly as possible.

Suppose for example that we wish to compare three treatments A, B and C using experimental animals. Suppose that animals from the same litter are appreciably more similar than animals from different litters. This might lead to an experimental setup like:

FileName	Litter	Treatment
File1	1	A
File2	1	B
File3	1	C
File4	2	B
File5	2	A
File6	2	C
File7	3	C
File8	3	B
File9	3	A

Here it is the differences between the treatments that are of interest. The differences between the litters are not of primary interest, nor are we interested in a treatment effect that occurs for in only one litter, because that would not be reproducible.

We can compare the three treatments adjusting for any baseline differences between the litters by fitting an additive model:

```
> Litter <- factor(targets$Litter)
> Treatment <- factor(targets$Treatment)
> design <- model.matrix(~Litter+Treatment)
```

This creates a design matrix with five columns: three for the litters and two more for the differences between the treatments.

If `fit` is the fitted model with this design matrix, then we may proceed as follows. To detect genes that are differentially expressed between any of the three treatments, adjusting for litter differences:

```
> qlf <- glmQLFTest(fit, coef=4:5)
> topTags(qlf)
```

To detect genes that are differentially expressed in treatment B vs treatment A:

```
> qlf <- glmQLFTest(fit, coef=4)
> topTags(qlf)
```

To detect genes that are differentially expressed in treatment C vs treatment A:

```
> qlf <- glmQLFTest(fit, coef=5)
> topTags(qlf)
```

To detect genes that are differentially expressed in treatment C vs treatment B:

```
> qlf <- glmQLFTest(fit, contrast=c(0,0,0,-1,1))
> topTags(qlf)
```

The advantage of using litter as a blocking variable in the analysis is that this will make the comparison between the treatments more precise, if litter-mates are more alike than animals from different litters. On the other hand, if litter-mates are no more alike than animals from different litters, which might be so for genetically identical inbred laboratory animals, then the above analysis is somewhat inefficient because the litter effects are being estimated unnecessarily. In that case, it would be better to omit litter from the model formula.

3.4.3 Batch effects

Another situation in which additive model formulas are used is when correcting for batch effects in an experiment. The situation here is analogous to blocking, the only difference being that the batch effects were probably unintended rather than a deliberate aspect of the experimental design. The analysis is the same as for blocking. The treatments can be adjusted for differences between the batches by using an additive model formula of the form:

```
> design <- model.matrix(~Batch+Treatment)
```

In this type of analysis, the treatments are compared only within each batch. The analysis is corrected for baseline differences between the batches.

The Arabidopsis case study in Section 4.2 gives a fully worked example with batch effects.

3.5 Comparisons both between and within subjects

Here is a more complex scenario, posed by a poster to the Bioconductor mailing list. The experiment has 18 RNA samples collected from 9 subjects. The samples correspond to cells from 3 healthy patients, either treated or not with a hormone; cells from 3 patients with disease 1, either treated or not with the hormone; and cells from 3 patients with disease 2, either treated or not with the hormone. The targets frame looks like this:

```
> targets
  Disease Patient Treatment
1  Healthy      1      None
2  Healthy      1  Hormone
3  Healthy      2      None
4  Healthy      2  Hormone
5  Healthy      3      None
6  Healthy      3  Hormone
7 Disease1      4      None
8 Disease1      4  Hormone
9 Disease1      5      None
10 Disease1     5  Hormone
11 Disease1     6      None
12 Disease1     6  Hormone
13 Disease2     7      None
```

14	Disease2	7	Hormone
15	Disease2	8	None
16	Disease2	8	Hormone
17	Disease2	9	None
18	Disease2	9	Hormone

If all the RNA samples were collected from independent subjects, then this would be nested factorial experiment, from which we would want to estimate the treatment effect for each disease group. As it is, however, we have a paired comparison experiment for each disease group. The feature that makes this experiment complex is that some comparisons (between the diseases) are made *between* patients while other comparisons (hormone treatment vs no treatment) are made *within* patients.

The design matrix will be easier to construct in R if we re-number the patients within each disease group:

```
> Patient <- gl(3,2,length=18)
```

We also define Disease and Treatment to be factors, with the control state as the first level in each case:

```
> Disease <- factor(targets$Disease, levels=c("Healthy","Disease1","Disease2"))
> Treatment <- factor(targets$Treatment, levels=c("None","Hormone"))
```

This gives us a revised targets frame:

```
> data.frame(Disease, Patient, Treatment)
  Disease Patient Treatment
1 Healthy      1      None
2 Healthy      1  Hormone
3 Healthy      2      None
4 Healthy      2  Hormone
5 Healthy      3      None
6 Healthy      3  Hormone
7 Disease1     1      None
8 Disease1     1  Hormone
9 Disease1     2      None
10 Disease1    2  Hormone
11 Disease1     3      None
12 Disease1     3  Hormone
13 Disease2     1      None
14 Disease2     1  Hormone
15 Disease2     2      None
16 Disease2     2  Hormone
17 Disease2     3      None
18 Disease2     3  Hormone
```

Now we can construct the design matrix. The critical feature to appreciate is that Patient and Treatment are of interest within each disease group, so we use the nested factorial formula

discussed in a previous section. The patients are nested with the disease groups, because we have different patients in each group. The treatment is nested within disease groups, because we are interested in the disease-specific treatment effects. The model formula has the main effect for disease plus nested interactions with Patient and Treatment:

```
> design <- model.matrix(~Disease+Disease:Patient+Disease:Treatment)
> colnames(design)
[1] "(Intercept)" "DiseaseDisease1"
[3] "DiseaseDisease2" "DiseaseHealthy:Patient2"
[5] "DiseaseDisease1:Patient2" "DiseaseDisease2:Patient2"
[7] "DiseaseHealthy:Patient3" "DiseaseDisease1:Patient3"
[9] "DiseaseDisease2:Patient3" "DiseaseHealthy:TreatmentHormone"
[11] "DiseaseDisease1:TreatmentHormone" "DiseaseDisease2:TreatmentHormone"
```

After estimating the dispersions (code not shown), we can fit a linear model:

```
> fit <- glmQLFit(y, design)
```

To find genes responding to the hormone in healthy patients:

```
> qlf <- glmQLFTest(fit, coef="DiseaseHealthy:TreatmentHormone")
> topTags(qlf)
```

To find genes responding to the hormone in disease1 patients:

```
> qlf <- glmQLFTest(fit, coef="DiseaseDisease1:TreatmentHormone")
> topTags(qlf)
```

To find genes responding to the hormone in disease2 patients:

```
> qlf <- glmQLFTest(fit, coef="DiseaseDisease2:TreatmentHormone")
> topTags(qlf)
```

To find genes that respond to the hormone in *any* disease group:

```
> qlf <- glmQLFTest(fit, coef=10:12)
> topTags(qlf)
```

To find genes that respond differently to the hormone in disease1 vs healthy patients:

```
> qlf <- glmQLFTest(fit, contrast=c(0,0,0,0,0,0,0,0,0,-1,1,0))
> topTags(qlf)
```

To find genes that respond differently to the hormone in disease2 vs healthy patients:

```
> qlf <- glmQLFTest(fit, contrast=c(0,0,0,0,0,0,0,0,0,-1,0,1))
> topTags(qlf)
```

To find genes that respond differently to the hormone in disease2 vs disease1 patients:

```
> qlf <- glmQLFTest(fit, contrast=c(0,0,0,0,0,0,0,0,0,-1,1))
> topTags(qlf)
```

Chapter 4

Case studies

4.1 RNA-Seq of oral carcinomas vs matched normal tissue

4.1.1 Introduction

This section provides a detailed analysis of data from a paired design RNA-seq experiment, featuring oral squamous cell carcinomas and matched normal tissue from three patients [35]. The aim of the analysis is to detect genes differentially expressed between tumor and normal tissue, adjusting for any differences between the patients. This provides an example of the GLM capabilities of edgeR.

RNA was sequenced on an Applied Biosystems SOLiD System 3.0 and reads mapped to the UCSC hg18 reference genome [35]. Read counts, summarised at the level of refSeq transcripts, are available in Table S1 of Tuch et al. [35].

4.1.2 Reading in the data

The read counts for the six individual libraries are stored in one tab-delimited file. To make this file, we downloaded Table S1 from Tuch et al. [35], deleted some unnecessary columns and edited the column headings slightly:

```
> rawdata <- read.delim("TableS1.txt", check.names=FALSE, stringsAsFactors=FALSE)
> head(rawdata)
```

	RefSeqID	Symbol	NbrOfExons	8N	8T	33N	33T	51N	51T
1	NM_182502	TMPRSS11B	10	2592	3	7805	321	3372	9
2	NM_003280	TNNC1	6	1684	0	1787	7	4894	559
3	NM_152381	XIRP2	10	9915	15	10396	48	23309	7181
4	NM_022438	MAL	3	2496	2	3585	239	1596	7
5	NM_001100112	MYH2	40	4389	7	7944	16	9262	1818
6	NM_017534	MYH2	40	4402	7	7943	16	9244	1815

For easy manipulation, we put the data into a `DGEList` object:

```
> library(edgeR)
> y <- DGEList(counts=rawdata[,4:9], genes=rawdata[,1:3])
```

4.1.3 Annotation

The study by Tuch et al. [35] was undertaken a few years ago, so not all of the RefSeq IDs provided by match RefSeq IDs currently in use. We retain only those transcripts with IDs in the current NCBI annotation, which is provided by the `org.Hs.eg.db` package:

```
> library(org.Hs.eg.db)
> idfound <- y$genes$RefSeqID %in% mappedRkeys(org.Hs.egREFSEQ)
> y <- y[idfound,]
> dim(y)
[1] 15554      6
```

We add Entrez Gene IDs to the annotation:

```
> egREFSEQ <- toTable(org.Hs.egREFSEQ)
> head(egREFSEQ)
  gene_id  accession
1      1    NM_130786
2      1    NP_570602
3      2    NM_000014
4      2 NM_001347423
5      2 NM_001347424
6      2 NM_001347425
> m <- match(y$genes$RefSeqID, egREFSEQ$accession)
> y$genes$EntrezGene <- egREFSEQ$gene_id[m]
```

Now use the Entrez Gene IDs to update the gene symbols:

```
> egSYMBOL <- toTable(org.Hs.egSYMBOL)
> head(egSYMBOL)
  gene_id symbol
1      1    A1BG
2      2    A2M
3      3  A2MP1
4      9   NAT1
5     10  NAT2
6     11  NATP
> m <- match(y$genes$EntrezGene, egSYMBOL$gene_id)
> y$genes$Symbol <- egSYMBOL$symbol[m]
> head(y$genes)
```

	RefSeqID	Symbol	NbrOfExons	EntrezGene
1	NM_182502	TPRSS11B	10	132724
2	NM_003280	TNNC1	6	7134
3	NM_152381	XIRP2	10	129446
4	NM_022438	MAL	3	4118
5	NM_001100112	MYH2	40	4620
6	NM_017534	MYH2	40	4620

4.1.4 Filtering and normalization

Different RefSeq transcripts for the same gene symbol count predominantly the same reads. So we keep one transcript for each gene symbol. We choose the transcript with highest overall count:

```
> o <- order(rowSums(y$counts), decreasing=TRUE)
> y <- y[o,]
> d <- duplicated(y$genes$Symbol)
> y <- y[!d,]
> nrow(y)
[1] 10521
```

Normally we would also filter lowly expressed genes. For this data, all transcripts already have at least 50 reads for all samples of at least one of the tissues types.

Recompute the library sizes:

```
> y$samples$lib.size <- colSums(y$counts)
```

Use Entrez Gene IDs as row names:

```
> rownames(y$counts) <- rownames(y$genes) <- y$genes$EntrezGene
> y$genes$EntrezGene <- NULL
```

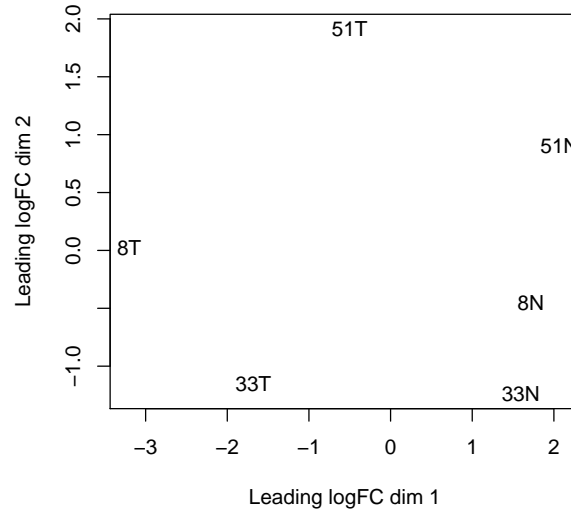
TMM normalization is applied to this dataset to account for compositional difference between the libraries.

```
> y <- calcNormFactors(y)
> y$samples
  group lib.size norm.factors
8N     1  7991370      1.146
8T     1  7372609      1.086
33N    1 15758984      0.672
33T    1 14047937      0.974
51N    1 21544884      1.031
51T    1 15196985      1.191
```

4.1.5 Data exploration

The first step of an analysis should be to examine the samples for outliers and for other relationships. The function `plotMDS` produces a plot in which distances between samples correspond to leading biological coefficient of variation (BCV) between those samples:

```
> plotMDS(y)
```



In the plot, dimension 1 separates the tumor from the normal samples, while dimension 2 roughly corresponds to patient number. This confirms the paired nature of the samples. The tumor samples appear more heterogeneous than the normal samples.

4.1.6 The design matrix

Before we fit negative binomial GLMs, we need to define our design matrix based on the experimental design. Here we want to test for differential expression between tumour and normal tissues within patients, i.e. adjusting for differences between patients. In statistical terms, this is an additive linear model with patient as the blocking factor:

```
> Patient <- factor(c(8,8,33,33,51,51))
> Tissue <- factor(c("N","T","N","T","N","T"))
> data.frame(Sample=colnames(y),Patient,Tissue)
```

	Sample	Patient	Tissue
1	8N	8	N
2	8T	8	T
3	33N	33	N


```

4   33T   33   T
5   51N   51   N
6   51T   51   T
> design <- model.matrix(~Patient+Tissue)
> rownames(design) <- colnames(y)
> design
      (Intercept) Patient33 Patient51 TissueT
8N              1         0         0       0
8T              1         0         0       1
33N             1         1         0       0
33T             1         1         0       1
51N             1         0         1       0
51T             1         0         1       1
attr(,"assign")
[1] 0 1 1 2
attr(,"contrasts")
attr(,"contrasts")$Patient
[1] "contr.treatment"

attr(,"contrasts")$Tissue
[1] "contr.treatment"

```

This sort of additive model is appropriate for paired designs, or experiments with batch effects.

4.1.7 Estimating the dispersion

We estimate the NB dispersion for the dataset.

```

> y <- estimateDisp(y, design, robust=TRUE)
> y$common.dispersion
[1] 0.159

```

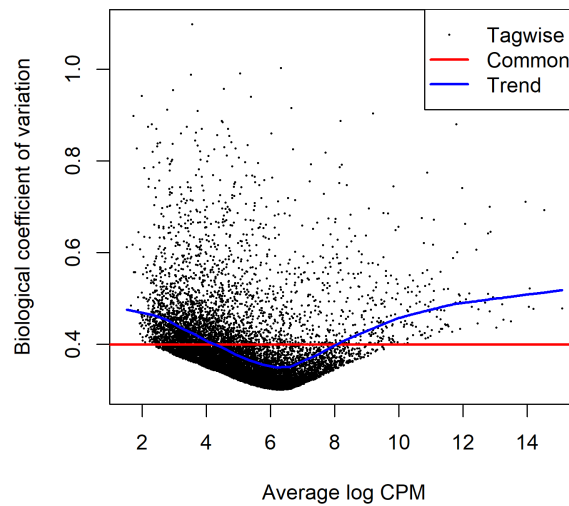
The square root of the common dispersion gives the coefficient of variation of biological variation. Here the common dispersion is found to be 0.159, so the coefficient of biological variation is around 0.4.

The dispersion estimates can be viewed in a BCV plot:

```

> plotBCV(y)

```



4.1.8 Differential expression

Now proceed to determine differentially expressed genes. Fit genewise glms:

```
> fit <- glmFit(y, design)
```

Conduct likelihood ratio tests for tumour vs normal tissue differences and show the top genes:

```
> lrt <- glmLRT(fit)
> topTags(lrt)
```

Coefficient: TissueT

	RefSeqID	Symbol	NbrOfExons	logFC	logCPM	LR	PValue	FDR
5737	NM_001039585	PTGFR	4	-5.18	4.74	98.7	2.99e-23	3.15e-19
5744	NM_002820	PTHLH	4	3.97	6.21	92.1	8.06e-22	4.24e-18
3479	NM_001111283	IGF1	5	-3.99	5.71	86.5	1.37e-20	4.80e-17
1288	NM_033641	COL4A6	45	3.66	5.72	77.5	1.32e-18	3.47e-15
10351	NM_007168	ABCA8	38	-3.98	4.94	75.9	2.99e-18	6.29e-15
5837	NM_005609	PYGM	20	-5.48	5.99	75.4	3.81e-18	6.68e-15
487	NM_004320	ATP2A1	23	-4.62	5.96	74.8	5.14e-18	7.72e-15
27179	NM_014440	IL36A	4	-6.17	5.40	72.2	1.99e-17	2.61e-14
196374	NM_173352	KRT78	9	-4.25	7.61	70.8	4.03e-17	4.71e-14
83699	NM_031469	SH3BGRL2	4	-3.93	5.53	67.8	1.82e-16	1.92e-13

Note that `glmLRT` has conducted a test for the last coefficient in the linear model, which we can see is the tumor vs normal tissue effect:

```
> colnames(design)
```

```
[1] "(Intercept)" "Patient33"    "Patient51"    "TissueT"
```

The genewise tests are for tumor vs normal differential expression, adjusting for baseline differences between the three patients. The tests can be viewed as analogous to paired *t*-tests. The top DE tags have tiny *p*-values and FDR values, as well as large fold changes.

Here's a closer look at the counts-per-million in individual samples for the top genes:

```
> o <- order(lrt$table$PValue)
> cpm(y)[o[1:10],]
      8N      8T      33N      33T      51N      51T
5737  49.70  0.875  27.08  0.877  78.12  2.5422
5744   7.32 95.823  11.79 204.085   6.88 116.2797
3479  50.25  3.123  32.37   1.901 211.63  14.2034
1288  12.12 140.174   6.32  94.401   4.86  56.8135
10351 52.65  3.123  39.44   2.121  79.20   6.0793
5837 152.81  2.749 119.55   1.170  97.69   5.6924
487   107.92  3.123 147.01   3.802 102.82   8.8978
27179 40.09  1.249 172.11   3.291  36.09   0.0553
196374 372.25 20.739 581.07  47.749 145.08   4.5318
83699  96.23  5.122 117.10   5.411  48.19   5.4161
```

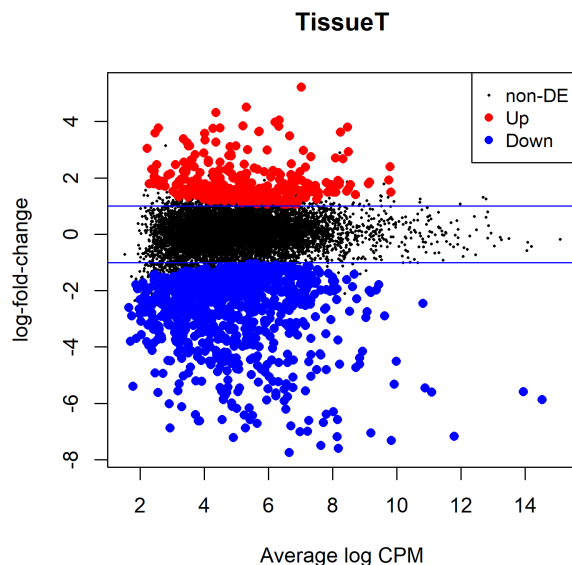
We see that all the top genes have consistent tumour vs normal changes for the three patients.

The total number of differentially expressed genes at 5% FDR is given by:

```
> summary(decideTests(lrt))
      TissueT
-1         939
0        9252
1         330
```

Plot log-fold change against log-counts per million, with DE genes highlighted:

```
> plotMD(lrt)
> abline(h=c(-1, 1), col="blue")
```



The blue lines indicate 2-fold changes.

4.1.9 Gene ontology analysis

We perform a gene ontology analysis focusing on the ontology of biological process (BP). The genes up-regulated in the tumors tend to be associated with cell differentiation, cell migration and tissue morphogenesis:

```
> go <- goana(lrt)
> topGO(go, ont="BP", sort="Up", n=30)
```

	Term	Ont	N	Up	Down	P.Up	P.Down
GO:0040011	locomotion	BP	964	71	139	1.44e-11	3.01e-09
GO:0007155	cell adhesion	BP	822	63	137	5.07e-11	9.85e-14
GO:0022610	biological adhesion	BP	827	63	138	6.56e-11	7.13e-14
GO:0030198	extracellular matrix organization	BP	219	29	44	7.92e-11	2.14e-07
GO:0043062	extracellular structure organization	BP	219	29	44	7.92e-11	2.14e-07
GO:0009888	tissue development	BP	1126	75	170	4.13e-10	5.96e-13
GO:0006928	movement of cell or subcellular component	BP	1120	74	166	8.11e-10	5.91e-12
GO:0016477	cell migration	BP	786	58	121	1.49e-09	7.04e-10
GO:0048870	cell motility	BP	840	60	124	2.59e-09	5.99e-09
GO:0051674	localization of cell	BP	840	60	124	2.59e-09	5.99e-09
GO:0030154	cell differentiation	BP	2148	113	274	9.28e-09	1.16e-11
GO:0048869	cellular developmental process	BP	2285	118	284	1.08e-08	8.64e-11
GO:0048699	generation of neurons	BP	788	56	87	1.17e-08	2.07e-02
GO:0022008	neurogenesis	BP	851	58	95	2.79e-08	1.21e-02
GO:0030155	regulation of cell adhesion	BP	427	36	59	1.10e-07	4.51e-04
GO:0043588	skin development	BP	206	23	28	1.95e-07	1.64e-02
GO:0009653	anatomical structure morphogenesis	BP	1504	83	210	2.78e-07	1.79e-12

G0:0044763	single-organism cellular process	BP	6257	244	614	2.94e-07	4.06e-05
G0:0048729	tissue morphogenesis	BP	408	34	52	3.35e-07	5.47e-03
G0:0044707	single-multicellular organism process	BP	3430	153	419	5.43e-07	3.12e-16
G0:0048598	embryonic morphogenesis	BP	341	30	39	5.50e-07	6.48e-02
G0:0060429	epithelium development	BP	708	48	87	6.24e-07	1.17e-03
G0:0048513	animal organ development	BP	1894	97	254	6.79e-07	3.50e-13
G0:0009605	response to external stimulus	BP	1154	67	153	9.31e-07	1.40e-07
G0:0030182	neuron differentiation	BP	718	48	81	9.37e-07	1.56e-02
G0:0007275	multicellular organism development	BP	2864	132	344	1.09e-06	2.02e-11
G0:0008544	epidermis development	BP	227	23	33	1.11e-06	3.53e-03
G0:0032502	developmental process	BP	3383	150	392	1.20e-06	4.79e-11
G0:0048731	system development	BP	2566	121	322	1.29e-06	4.42e-13
G0:0048856	anatomical structure development	BP	3134	141	378	1.47e-06	3.54e-13

4.1.10 Setup

This analysis was conducted on:

```
> sessionInfo()
```

```
R version 3.4.2 (2017-09-28)
```

```
Platform: x86_64-w64-mingw32/x64 (64-bit)
```

```
Running under: Windows 10 x64 (build 15063)
```

```
Matrix products: default
```

```
locale:
```

```
[1] LC_COLLATE=English_Australia.1252 LC_CTYPE=English_Australia.1252
```

```
[3] LC_MONETARY=English_Australia.1252 LC_NUMERIC=C
```

```
[5] LC_TIME=English_Australia.1252
```

```
attached base packages:
```

```
[1] parallel stats4 stats graphics grDevices utils datasets methods base
```

```
other attached packages:
```

```
[1] org.Hs.eg.db_3.4.1 AnnotationDbi_1.38.2 IRanges_2.10.3 S4Vectors_0.14.5
```

```
[5] Biobase_2.36.2 BiocGenerics_0.22.0 edgeR_3.19.8 limma_3.32.7
```

```
loaded via a namespace (and not attached):
```

```
[1] locfit_1.5-9.1 Rcpp_0.12.13 lattice_0.20-35 G0.db_3.4.1 digest_0.6.12 grid_3.4.2
```

```
[7] DBI_0.7 RSQLite_2.0 rlang_0.1.2 blob_1.1.0 splines_3.4.2 statmod_1.4.30
```

```
[13] tools_3.4.2 bit64_0.9-7 bit_1.1-12 compiler_3.4.2 pkgconfig_2.0.1 memoise_1.1.0
```

```
[19] tibble_1.3.4
```

4.2 RNA-Seq of pathogen inoculated arabidopsis with batch effects

4.2.1 Introduction

This case study re-analyses *Arabidopsis thaliana* RNA-Seq data described by Cumbie et al. [6]. Summarized count data is available as a data object in the CRAN package `NBPSeq` comparing Δ hrcC challenged and mock-inoculated samples [6]. Samples were collected in three batches, and adjustment for batch effects proves to be important. The aim of the analysis therefore is to detect genes differentially expressed in response to Δ hrcC challenge, while correcting for any differences between the batches.

4.2.2 RNA samples

Pseudomonas syringae is a bacterium often used to study plant reactions to pathogens. In this experiment, six-week old *Arabidopsis* plants were inoculated with the Δ hrcC mutant of *P. syringae*, after which total RNA was extracted from leaves. Control plants were inoculated with a mock pathogen.

Three biological replicates of the experiment were conducted at separate times and using independently grown plants and bacteria.

The six RNA samples were sequenced one per lane on an Illumina Genome Analyzer. Reads were aligned and summarized per gene using GENE-counter. The reference genome was derived from the TAIR9 genome release (www.arabidopsis.org).

4.2.3 Loading the data

Load the data from the `NBPSeq` package:

```
> library(NBPSeq)
> library(edgeR)
> data(arab)
> head(arab)
```

	mock1	mock2	mock3	hrcc1	hrcc2	hrcc3
AT1G01010	35	77	40	46	64	60
AT1G01020	43	45	32	43	39	49
AT1G01030	16	24	26	27	35	20
AT1G01040	72	43	64	66	25	90
AT1G01050	49	78	90	67	45	60
AT1G01060	0	15	2	0	21	8

There are two experimental factors, treatment (hrcc vs mock) and the time that each replicate was conducted:

```
> Treat <- factor(substring(colnames(arab),1,4))
> Treat <- relevel(Treat, ref="mock")
> Time <- factor(substring(colnames(arab),5,5))
```

We then create a `DGEList` object:

```
> y <- DGEList(counts=arab, group=Treat)
```

4.2.4 Filtering and normalization

There is no purpose in analysing genes that are not expressed in either experimental condition. We consider a gene to be expressed at a reasonable level in a sample if it has at least two counts for each million mapped reads in that sample. This cutoff is ad hoc, but serves to require at least 4–6 reads in this case. Since this experiment has three replicates for each condition, a gene should be expressed in at least three samples if it responds to at least one condition. Hence we keep genes with at least two counts per million (CPM) in at least three samples:

```
> keep <- rowSums(cpm(y)>2) >= 3
> table(keep)
keep
FALSE  TRUE
 9696 16526
> y <- y[keep, , keep.lib.sizes=FALSE]
```

Note that the filtering does not use knowledge of what treatment corresponds to each sample, so the filtering does not bias the subsequent differential expression analysis.

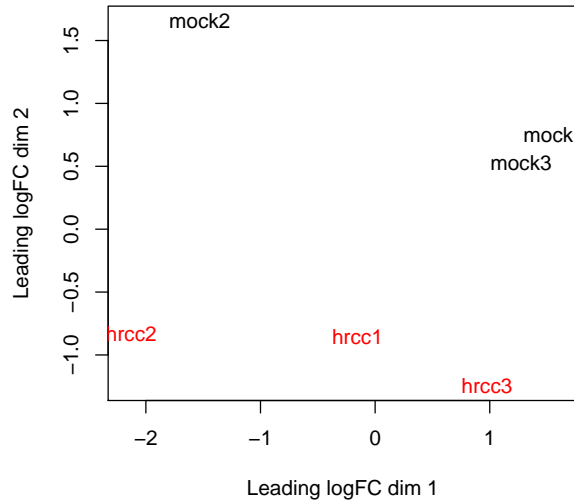
The TMM normalization is applied to account for the compositional biases:

```
> y <- calcNormFactors(y)
> y$samples
      group lib.size norm.factors
mock1 mock 1896802      0.979
mock2 mock 1898690      1.054
mock3 mock 3249396      0.903
hrcc1 hrcc 2119367      1.051
hrcc2 hrcc 1264927      1.096
hrcc3 hrcc 3516253      0.932
```

4.2.5 Data exploration

An MDS plot shows the relative similarities of the six samples.

```
> plotMDS(y, col=rep(1:2, each=3))
```



Distances on an MDS plot of a DGEList object correspond to *leading log-fold-change* between each pair of samples. Leading log-fold-change is the root-mean-square average of the largest \log_2 -fold-changes between each pair of samples. Each pair of samples extracted at each time tend to cluster together, suggesting a batch effect. The hrcc treated samples tend to be below the mock samples for each time, suggesting a treatment effect within each time. The two samples at time 1 are less consistent than at times 2 and 3.

To examine further consistency of the three replicates, we compute predictive log2-fold-changes (logFC) for the treatment separately for the three times.

```
> design <- model.matrix(~Time+Time:Treat)
> logFC <- predFC(y,design,prior.count=1,dispersion=0.05)
```

The logFC at the three times are positively correlated with one another, as we would hope:

```
> cor(logFC[,4:6])
```

	Time1:Treathrcc	Time2:Treathrcc	Time3:Treathrcc
Time1:Treathrcc	1.000	0.315	0.400
Time2:Treathrcc	0.315	1.000	0.437
Time3:Treathrcc	0.400	0.437	1.000

The correlation is highest between times 2 and 3.

4.2.6 The design matrix

Before we fit GLMs, we need to define our design matrix based on the experimental design. We want to test for differential expressions between Δ hrcC challenged and mock-inoculated samples within batches, i.e. adjusting for differences between batches. In statistical terms, this is an additive linear model. So the design matrix is created as:


```

> design <- model.matrix(~Time+Treat)
> rownames(design) <- colnames(y)
> design
      (Intercept) Time2 Time3 Treathrcc
mock1           1     0     0         0
mock2           1     1     0         0
mock3           1     0     1         0
hrcc1           1     0     0         1
hrcc2           1     1     0         1
hrcc3           1     0     1         1
attr(,"assign")
[1] 0 1 1 2
attr(,"contrasts")
attr(,"contrasts")$Time
[1] "contr.treatment"

attr(,"contrasts")$Treat
[1] "contr.treatment"

```

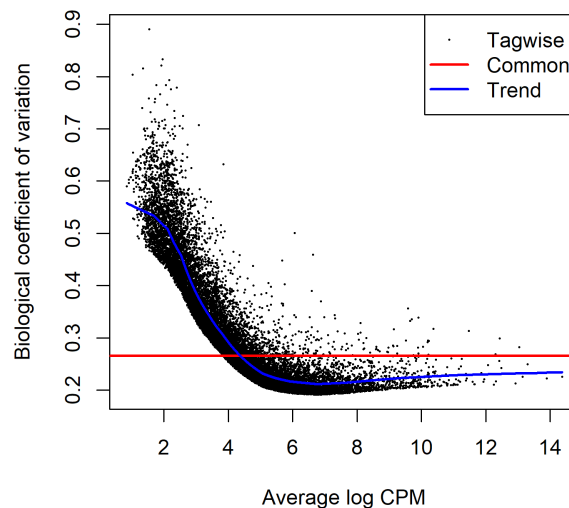
4.2.7 Estimating the dispersion

Estimate the genewise dispersion estimates over all genes, allowing for a possible abundance trend. The estimation is also robustified against potential outlier genes.

```

> y <- estimateDisp(y, design, robust=TRUE)
> y$common.dispersion
[1] 0.0705
> plotBCV(y)

```

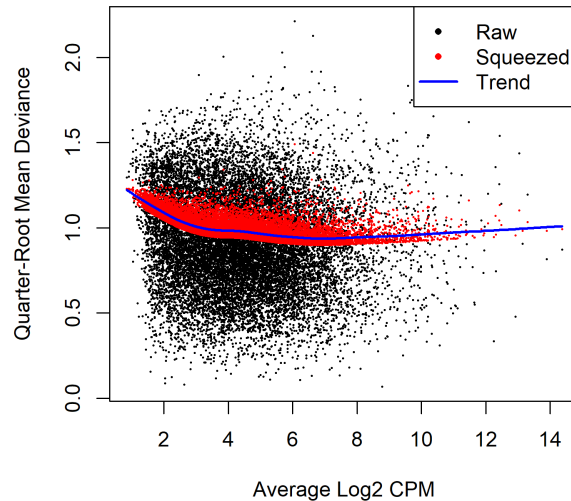


The square root of dispersion is the coefficient of biological variation (BCV). The common BCV is on the high side, considering that this is a designed experiment using genetically identical plants. The trended dispersion shows a decreasing trend with expression level. At low logCPM, the dispersions are very large indeed.

Note that only the trended dispersion is used under the quasi-likelihood (QL) pipeline. The tagwise and common estimates are shown here but will not be used further.

The QL dispersions can be estimated using the `glmQLFit` function, and then be visualized with the `plotQLDisp` function.

```
> fit <- glmQLFit(y, design, robust=TRUE)
> plotQLDisp(fit)
```



4.2.8 Differential expression

Now we test for significant differential expression in each gene using the QL F-test.

First we check whether there was a genuine need to adjust for the experimental times. We do this by testing for differential expression between the three times. There is considerable differential expression, justifying our decision to adjust for the batch effect:

```
> qlf <- glmQLFTest(fit, coef=2:3)
> topTags(qlf)
```

	Coefficient:	Time2	Time3					
	logFC.Time2	logFC.Time3	logCPM	F	PValue	FDR		
AT5G66800	5.58	-1.065	5.48	150.1	8.93e-10	1.48e-05		
AT5G23000	5.58	-0.292	5.71	127.5	2.48e-09	2.05e-05		

```

AT5G31702      5.83      -2.568    5.95 113.9 5.03e-09 2.77e-05
AT2G45830      5.42      -0.589    4.71 108.4 6.84e-09 2.83e-05
AT3G33004      4.81      -1.763    5.63 102.8 9.47e-09 3.13e-05
AT2G11230      3.50      -1.532    5.60  98.7 1.22e-08 3.36e-05
AT2G07782      3.48      -1.616    5.28  93.5 1.70e-08 4.01e-05
AT2G18193      3.05      -2.396    5.08  84.8 3.09e-08 6.04e-05
AT2G23910      3.59      -0.384    5.13  83.9 3.29e-08 6.04e-05
AT5G54830      3.07      -0.367    6.07  79.7 4.51e-08 7.31e-05
> FDR <- p.adjust(qlf$table$PValue, method="BH")
> sum(FDR < 0.05)
[1] 1628

```

Now conduct QL F-tests for the pathogen effect and show the top genes. By default, the test is for the last coefficient in the design matrix, which in this case is the treatment effect:

```

> qlf <- glmQLFTest(fit)
> topTags(qlf)
Coefficient: Treathrcc
      logFC logCPM    F  PValue    FDR
AT2G19190  4.50   7.37 304 1.83e-10 2.62e-06
AT2G39530  4.34   6.71 278 3.17e-10 2.62e-06
AT3G46280  4.78   8.10 247 6.70e-10 2.78e-06
AT2G39380  4.94   5.77 247 6.72e-10 2.78e-06
AT1G51800  3.97   7.71 232 9.92e-10 3.28e-06
AT1G51850  5.32   5.42 209 1.89e-09 4.30e-06
AT5G48430  6.32   6.73 203 2.30e-09 4.30e-06
AT2G44370  5.41   5.20 200 2.50e-09 4.30e-06
AT1G51820  4.34   6.37 198 2.64e-09 4.30e-06
AT3G55150  5.78   4.90 196 2.80e-09 4.30e-06

```

Here's a closer look at the individual counts-per-million for the top genes. The top genes are very consistent across the three replicates:

```

> top <- rownames(topTags(qlf))
> cpm(y)[top,]
      mock1 mock2 mock3 hrcc1 hrcc2 hrcc3
AT2G19190 16.696 12.0 13.29 341.3 254.7 351.1
AT2G39530  7.001  9.0 13.29 158.1 191.9 243.1
AT3G46280 18.850 17.0 18.40 384.8 374.5 820.9
AT2G39380  2.154  3.0  4.77  91.6  84.4 135.1
AT1G51800 29.083 16.5 30.66 362.4 347.8 464.0
AT1G51850  1.077  1.0  3.75  78.1  56.3 108.9
AT5G48430  4.309  4.5  0.00 189.1 314.6 125.1
AT2G44370  2.154  1.0  1.70  57.0  67.1  86.0
AT1G51820  9.694  7.5  6.13 121.2 156.6 191.3
AT3G55150  0.539  1.0  1.36  43.1  64.9  64.4

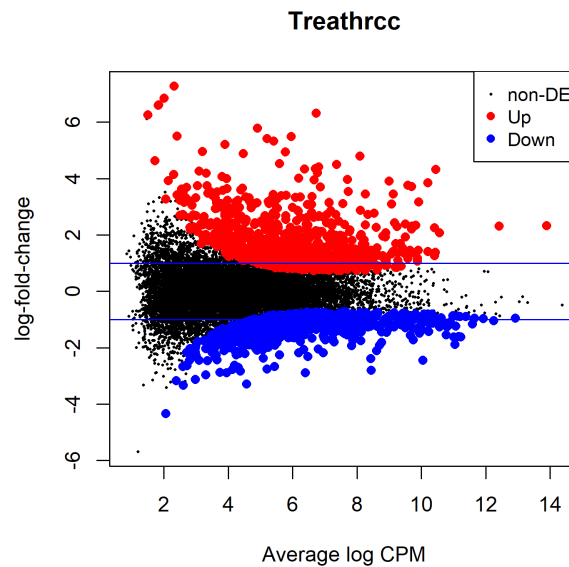
```

The total number of genes significantly up-regulated or down-regulated at 5% FDR is summarized as follows:

```
> summary(decideTests(qlf))
      Treathrcc
-1         837
0        14797
1         892
```

We can plot all the logFCs against average count size, highlighting the DE genes:

```
> plotMD(qlf)
> abline(h=c(-1,1), col="blue")
```



The blue lines indicate 2-fold up or down.

4.2.9 Setup

This analysis was conducted on:

```
> sessionInfo()
R version 3.4.2 (2017-09-28)
Platform: x86_64-w64-mingw32/x64 (64-bit)
Running under: Windows 10 x64 (build 15063)

Matrix products: default
```

```

locale:
[1] LC_COLLATE=English_Australia.1252 LC_CTYPE=English_Australia.1252
[3] LC_MONETARY=English_Australia.1252 LC_NUMERIC=C
[5] LC_TIME=English_Australia.1252

attached base packages:
[1] parallel stats4 stats graphics grDevices utils datasets methods base

other attached packages:
[1] NBPSeq_0.3.0 org.Hs.eg.db_3.4.1 AnnotationDbi_1.38.2 IRanges_2.10.3
[5] S4Vectors_0.14.5 Biobase_2.36.2 BiocGenerics_0.22.0 edgeR_3.19.8
[9] limma_3.32.7

loaded via a namespace (and not attached):
[1] Rcpp_0.12.13 magrittr_1.5 splines_3.4.2 munsell_0.4.3 bit_1.1-12
[6] statmod_1.4.30 colorspace_1.3-2 lattice_0.20-35 rlang_0.1.2 stringr_1.2.0
[11] plyr_1.8.4 blob_1.1.0 tools_3.4.2 grid_3.4.2 gtable_0.2.0
[16] DBI_0.7 lazyeval_0.2.0 bit64_0.9-7 digest_0.6.12 tibble_1.3.4
[21] reshape2_1.4.2 ggplot2_2.2.1 memoise_1.1.0 qvalue_2.8.0 RSQLite_2.0
[26] stringi_1.1.5 compiler_3.4.2 GO.db_3.4.1 scales_0.5.0 locfit_1.5-9.1
[31] pkgconfig_2.0.1

```

4.3 Profiles of Yoruba HapMap individuals

4.3.1 Background

RNA-Seq profiles were made of cell lines derived from lymphoblastoid cells from 69 different Yoruba individuals from Ibadan, Nigeria [25] [26]. The profiles were generated as part of the International HapMap project [11]. RNA from each individual was sequenced on at least two lanes of an Illumina Genome Analyser 2, and mapped reads to the human genome using MAQ v0.6.8.

The study group here is essentially an opportunity sample and the individuals are likely to be genetically diverse. In this analysis we look at genes that are differentially expressed between males and female.

4.3.2 Loading the data

Read counts summarized by Ensembl gene identifiers are available in the `tweeDEseqCountData` package:

```

> library(tweeDEseqCountData)
> data(pickrell11)
> Counts <- exprs(pickrell11.eset)
> dim(Counts)

```

```
[1] 38415    69
```

```
> Counts[1:5,1:5]
```

	NA18486	NA18498	NA18499	NA18501	NA18502
ENSG000000127720	6	32	14	35	14
ENSG000000242018	20	21	24	22	16
ENSG000000224440	0	0	0	0	0
ENSG000000214453	0	0	0	0	0
ENSG000000237787	0	0	1	0	0

In this analysis we will compare female with male individuals.

```
> Gender <- pickrell1.eset$gender
```

```
> table(Gender)
```

```
Gender
female  male
    40    29
```

```
> rm(pickrell1.eset)
```

Annotation for each Ensemble gene is also available from the `tweeDEseqCountData` package:

```
> data(annotEnsembl63)
```

```
> annot <- annotEnsembl63[,c("Symbol", "Chr")]
```

```
> annot[1:5,]
```

	Symbol	Chr
ENSG000000252775	U7	5
ENSG000000207459	U6	5
ENSG000000252899	U7	5
ENSG000000201298	U6	5
ENSG000000222266	U6	5

```
> rm(annotEnsembl63)
```

Form a `DGEList` object combining the counts and associated annotation:

```
> library(edgeR)
```

```
> y <- DGEList(counts=Counts, genes=annot[rownames(Counts),])
```

4.3.3 Filtering and normalization

Keep genes with least 1 count-per-million reads (cpm) in at least 20 samples:

```
> isexpr <- rowSums(cpm(y)>1) >= 20
```

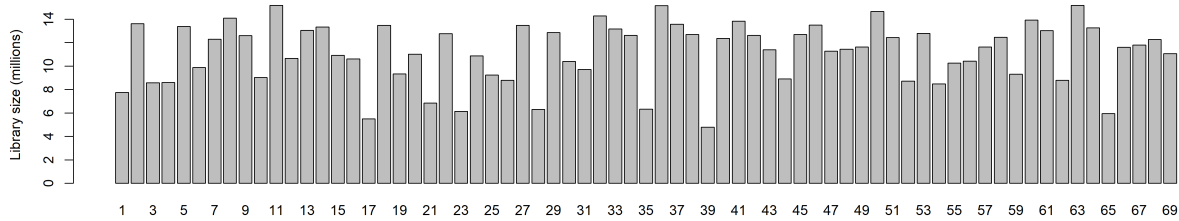
Keep only genes with defined annotation, and recompute library sizes:

```
> hasannot <- rowSums(is.na(y$genes))==0
> y <- y[isexpr & hasannot, , keep.lib.sizes=FALSE]
> dim(y)
```

```
[1] 17310    69
```

The library sizes vary from about 5 million to over 15 million:

```
> barplot(y$samples$lib.size*1e-6, names=1:69, ylab="Library size (millions)")
```



Apply TMM normalization to account for the composition biases:

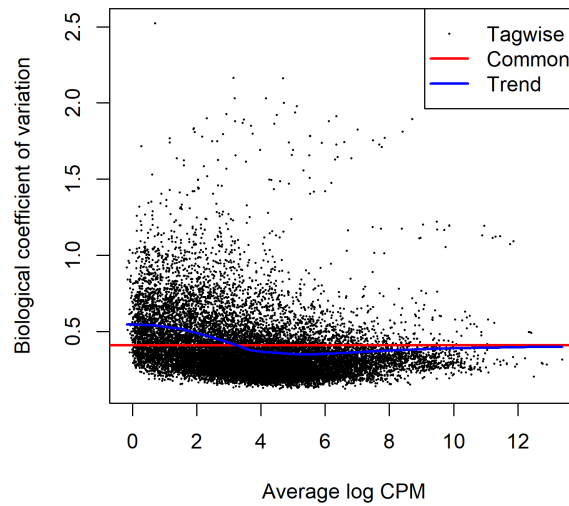
```
> y <- calcNormFactors(y)
> head(y$samples)
```

	group	lib.size	norm.factors
NA18486	1	7749527	0.939
NA18498	1	13612983	1.110
NA18499	1	8569631	0.963
NA18501	1	8595024	1.201
NA18502	1	13375275	0.938
NA18504	1	9881732	0.979

4.3.4 Estimating the dispersion

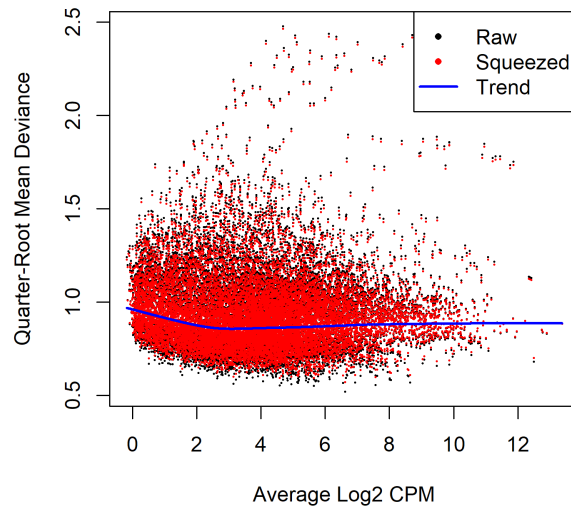
We are interested in the differences between male and female. Hence, we create a design matrix using the gender factor. We estimate the NB dispersion using `estimateDisp`. The estimation is robustified against potential outlier genes.

```
> design <- model.matrix(~Gender)
> y <- estimateDisp(y, design, robust=TRUE)
> plotBCV(y)
```



We then estimate the QL dispersions around the dispersion trend using `glmQLFit`. The large number of cases and the high variability means that the QL dispersions are not squeezed very heavily from the raw values:

```
> fit <- glmQLFit(y, design, robust=TRUE)
> plotQLDisp(fit)
```

4.3.5 Differential expression

Now find genes differentially expressed between male and females. Positive log-fold-changes mean higher expression in males. The highly ranked genes are mostly on the X or Y chromosomes. Top ranked is the famous XIST gene, which is known to be expressed only in females.

```
> qlf <- glmQLFTest(fit)
> topTags(qlf,n=15)
```

Coefficient: Gendermale

	Symbol	Chr	logFC	logCPM	F	PValue	FDR
ENSG00000229807	XIST	X	-9.49	7.249	1213	1.03e-46	1.78e-42
ENSG00000099749	CYorf15A	Y	4.28	1.757	857	1.19e-41	1.03e-37
ENSG00000131002	CYorf15B	Y	5.63	2.055	587	2.66e-36	1.31e-32
ENSG00000157828	RPS4Y2	Y	3.18	4.207	585	3.02e-36	1.31e-32
ENSG00000233864	TTY15	Y	4.84	1.254	538	4.42e-35	1.53e-31
ENSG00000198692	EIF1AY	Y	2.36	3.247	376	3.04e-30	8.78e-27
ENSG00000165246	NLGN4Y	Y	5.09	1.676	303	1.70e-27	4.21e-24
ENSG00000183878	UTY	Y	1.86	3.137	253	3.24e-25	7.01e-22
ENSG00000243209	AC010889.1	Y	2.66	0.797	232	3.63e-24	6.29e-21
ENSG00000129824	RPS4Y1	Y	2.53	5.401	232	3.63e-24	6.29e-21
ENSG00000012817	KDM5D	Y	1.47	4.950	222	1.16e-23	1.82e-20
ENSG00000213318	RP11-331F4.1	16	3.67	3.688	217	2.87e-23	4.13e-20
ENSG00000067048	DDX3Y	Y	1.62	5.621	181	2.48e-21	3.30e-18
ENSG00000146938	NLGN4X	X	3.94	1.048	139	1.81e-18	2.24e-15
ENSG00000232928	RP13-204A15.4	X	1.44	3.558	111	3.19e-16	3.68e-13

```
> summary(decideTests(qlf))
```

```

      Gendermale
-1          46
0         17243
1           21

```

4.3.6 Gene set testing

The `tweeDEseqCountData` package includes a list of genes belonging to the male-specific region of chromosome Y, and a list of genes located in the X chromosome that have been reported to escape X-inactivation. We expect genes in the first list to be up-regulated in males, whereas genes in the second list should be up-regulated in females.

```

> data(genderGenes)
> Ymale <- rownames(y) %in% msYgenes
> Xescape <- rownames(y) %in% XiEgenes

```

Roast gene set tests by `fry()` confirm that the male-specific genes are significantly up as a group in our comparison of males with females, whereas the X genes are significantly down as a group [36].

```

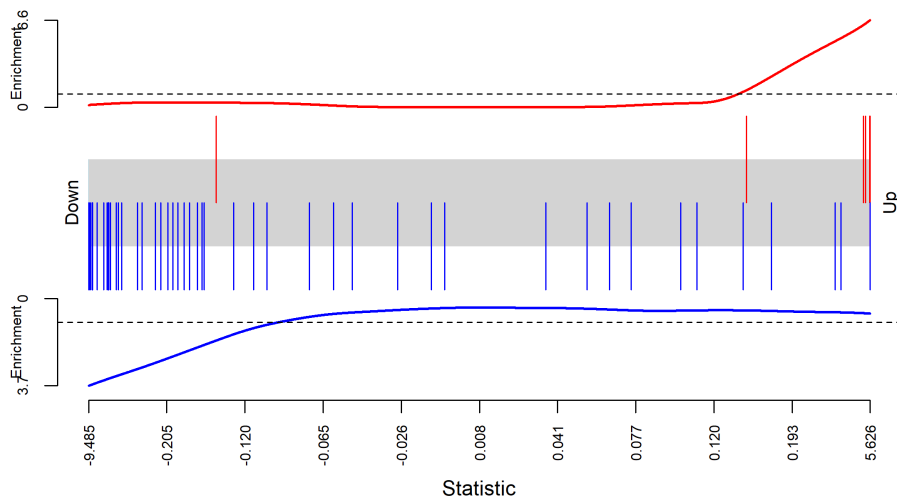
> index <- list(Y=Ymale, X=Xescape)
> fry(y, index=index, design=design)

```

	NGenes	Direction	PValue	FDR	PValue.Mixed	FDR.Mixed
Y	12	Up	7.04e-46	1.41e-45	5.86e-11	5.86e-11
X	46	Down	7.25e-17	7.25e-17	2.28e-66	4.55e-66

A barcode plot can be produced to visualize the results. Genes are ranked from left to right by decreasing log-fold-change in the background of the barcode plot. Genes in the set of **msYgenes** are represented by red bars whereas genes in the set of **XiEgenes** are represented by blue bars. The line above the barcode shows the relative local enrichment of the vertical bars in each part of the plot. This particular plot suggests that the male-specific genes tend to have large positive log-fold-changes, whereas the X genes tend to have large negative log-fold-changes.

```
> barcodeplot(qlf$table$logFC, index[[1]], index[[2]])
```



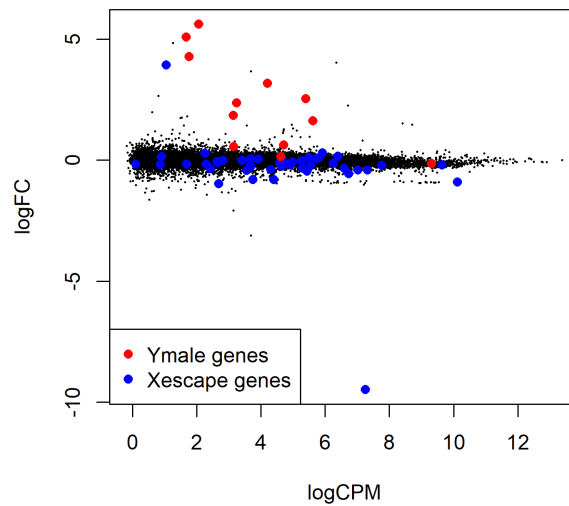
The results from competitive camera gene sets tests are even more convincing [37]. The positive intergene correlations here show that the genes in each set tend to be biologically correlated:

```
> camera(y, index, design)
```

	NGenes	Direction	PValue	FDR
Y	12	Up	1.27e-295	2.55e-295
X	46	Down	3.02e-25	3.02e-25

See where the X and Y genes fall on the MA plot:

```
> with(qlf$table, plot(logCPM, logFC, pch=16, cex=0.2))
> with(qlf$table, points(logCPM[Xescape], logFC[Xescape], pch=16, col="blue"))
> with(qlf$table, points(logCPM[Ymale], logFC[Ymale], pch=16, col="red"))
> legend("bottomleft", legend=c("Ymale genes", "Xescape genes"), pch=16, col=c("red", "blue"))
```



4.3.7 Setup

This analysis was conducted on:

```
> sessionInfo()
```

```
R version 3.4.2 (2017-09-28)
Platform: x86_64-w64-mingw32/x64 (64-bit)
Running under: Windows 10 x64 (build 15063)
```

```
Matrix products: default
```

```
locale:
```

```
[1] LC_COLLATE=English_Australia.1252 LC_CTYPE=English_Australia.1252
[3] LC_MONETARY=English_Australia.1252 LC_NUMERIC=C
[5] LC_TIME=English_Australia.1252
```

```
attached base packages:
```

```
[1] parallel stats4 stats graphics grDevices utils datasets methods base
```

```
other attached packages:
```

```
[1] tweedEseqCountData_1.14.0 NBPSeq_0.3.0 org.Hs.eg.db_3.4.1
[4] AnnotationDbi_1.38.2 IRanges_2.10.3 S4Vectors_0.14.5
[7] Biobase_2.36.2 BiocGenerics_0.22.0 edgeR_3.19.8
[10] limma_3.32.7
```

```
loaded via a namespace (and not attached):
```

```
[1] Rcpp_0.12.13 magrittr_1.5 splines_3.4.2 munsell_0.4.3 bit_1.1-12
```

```

[6] statmod_1.4.30    colorspace_1.3-2 lattice_0.20-35  rlang_0.1.2      stringr_1.2.0
[11] plyr_1.8.4        blob_1.1.0       tools_3.4.2      grid_3.4.2       gtable_0.2.0
[16] DBI_0.7           lazyeval_0.2.0   bit64_0.9-7      digest_0.6.12    tibble_1.3.4
[21] reshape2_1.4.2    ggplot2_2.2.1    memoise_1.1.0    qvalue_2.8.0     RSQLite_2.0
[26] stringi_1.1.5     compiler_3.4.2   GO.db_3.4.1      scales_0.5.0     locfit_1.5-9.1
[31] pkgconfig_2.0.1

```

4.4 RNA-Seq profiles of mouse mammary gland

4.4.1 Introduction

The RNA-Seq data of this case study is described in Fu *et al.* [8]. The sequence and count data are publicly available from the Gene Expression Omnibus (GEO) at the series accession number GSE60450. This study examines the expression profiles of basal stem-cell enriched cells (B) and committed luminal cells (L) in the mammary gland of virgin, pregnant and lactating mice. Six groups are present, with one for each combination of cell type and mouse status. Each group contains two biological replicates. This is summarized in the table below, where the basal and luminal cell types are abbreviated with B and L respectively.

```

> targets <- read.delim("targets.txt", header=TRUE)
> targets

```

	FileName	GEOAccession	CellType	Status
1	SRR1552450.fastq	GSM1480297	B	virgin
2	SRR1552451.fastq	GSM1480298	B	virgin
3	SRR1552452.fastq	GSM1480299	B	pregnant
4	SRR1552453.fastq	GSM1480300	B	pregnant
5	SRR1552454.fastq	GSM1480301	B	lactate
6	SRR1552455.fastq	GSM1480302	B	lactate
7	SRR1552444.fastq	GSM1480291	L	virgin
8	SRR1552445.fastq	GSM1480292	L	virgin
9	SRR1552446.fastq	GSM1480293	L	pregnant
10	SRR1552447.fastq	GSM1480294	L	pregnant
11	SRR1552448.fastq	GSM1480295	L	lactate
12	SRR1552449.fastq	GSM1480296	L	lactate

The name of the file containing the read sequences for each library is also shown. Each file is downloaded from the Sequence Read Archive and has an accession number starting with SRR, e.g., SRR1552450 for the first library in `targets`.

4.4.2 Read alignment and processing

Prior to read alignment, these files are converted into the FASTQ format using the `fastq-dump` utility from the SRA Toolkit. See <http://www.ncbi.nlm.nih.gov/books/NBK158900> for how to download and use the SRA Toolkit.

Before the differential expression analysis can proceed, these reads must be aligned to the mouse genome and counted into annotated genes. This can be achieved with functions in the `Rsubread` package [13]. We assume that an index of the mouse genome is already available - if not, this can be constructed from a FASTA file of the genome sequence with the `buildindex` command. In this example, we assume that the prefix for the index files is `mm10`. The reads in each FASTQ file are then aligned to the mouse genome, as shown below.

```
> library(Rsubread)
> output.files <- sub(".fastq", ".bam", targets$FileName)
> align("mm10", readfile1=targets$FileName, phredOffset=33,
+       input_format="FASTQ", output_file=output.files)
```

This produces a set of BAM files, where each file contains the read alignments for each library. The mapped reads can be counted into mouse genes by using the `featureCounts` function. It uses the exon intervals defined in the NCBI annotation of the `mm10` genome.

```
> fc <- featureCounts(output.files, annot.inbuilt="mm10")
> colnames(fc$counts) <- 1:12
> head(fc$counts)
```

	1	2	3	4	5	6	7	8	9	10	11	12
497097	438	300	65	237	354	287	0	0	0	0	0	0
100503874	1	0	1	1	0	4	0	0	0	0	0	0
100038431	0	0	0	0	0	0	0	0	0	0	0	0
19888	1	1	0	0	0	0	10	3	10	2	0	0
20671	106	182	82	105	43	82	16	25	18	8	3	10
27395	309	234	337	300	290	270	560	464	489	328	307	342

The row names of the matrix represent the Entrez gene identifiers for each gene. In the output from `featureCounts`, the column names of `fc$counts` are the output file names from `align`. Here, we simplify them for brevity.

4.4.3 Count loading and annotation

We create a `DGEList` object as follows

```
> group <- factor(paste0(targets$CellType, ".", targets$Status))
> y <- DGEList(fc$counts, group=group)
> colnames(y) <- targets$GEO
```

Human-readable gene symbols can also be added to complement the Entrez identifiers for each gene, using the annotation in the `org.Mm.eg.db` package.

```
> require(org.Mm.eg.db)
> y$genes <- select(org.Mm.eg.db, keys=rownames(y), columns="SYMBOL")
> head(y$genes)
```

	ENTREZID	SYMBOL
1	497097	Xkr4
2	100503874	Gm19938
3	100038431	Gm10568
4	19888	Rp1
5	20671	Sox17
6	27395	Mrp115

4.4.4 Filtering and normalization

Here, a gene is only retained if it is expressed at a count-per-million (CPM) above 0.5 in at least two samples.

```
> keep <- rowSums(cpm(y) > 0.5) >= 2
> summary(keep)

Mode    FALSE     TRUE
logical 11375    15804

> y <- y[keep, , keep.lib.sizes=FALSE]
```

TMM normalization is performed to eliminate composition biases between libraries.

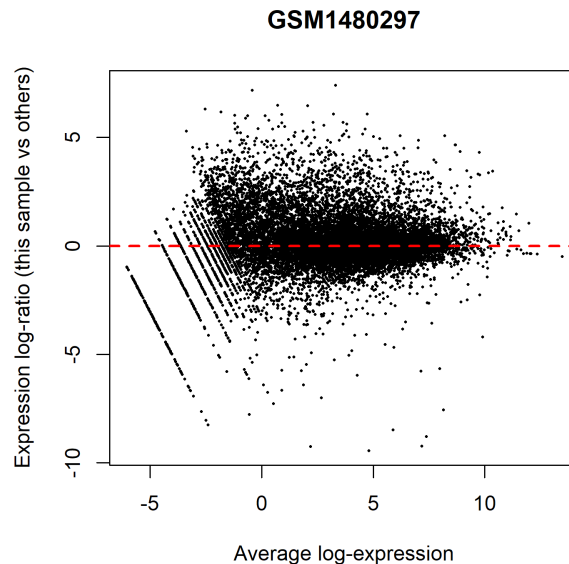
```
> y <- calcNormFactors(y)
> y$samples
```

	group	lib.size	norm.factors
GSM1480297	B.virgin	23218026	1.237
GSM1480298	B.virgin	21768136	1.214
GSM1480299	B.pregnant	24091588	1.126
GSM1480300	B.pregnant	22656713	1.070
GSM1480301	B.lactate	21522033	1.036
GSM1480302	B.lactate	20008326	1.087

GSM1480291	L.virgin	20384562	1.368
GSM1480292	L.virgin	21698793	1.365
GSM1480293	L.pregnant	22235847	1.005
GSM1480294	L.pregnant	21982745	0.923
GSM1480295	L.lactate	24719697	0.529
GSM1480296	L.lactate	24652963	0.535

The performance of the TMM normalization procedure can be examined using mean-difference (MD) plots. This visualizes the library size-adjusted log-fold change between two libraries (the difference) against the average log-expression across those libraries (the mean). The following MD plot is generated by comparing sample 1 against an artificial library constructed from the average of all other samples.

```
> plotMD(cpm(y, log=TRUE), column=1)
> abline(h=0, col="red", lty=2, lwd=2)
```



Ideally, the bulk of genes should be centred at a log-fold change of zero. This indicates that any composition bias between libraries has been successfully removed. This quality check should be repeated by constructing a MD plot for each sample.

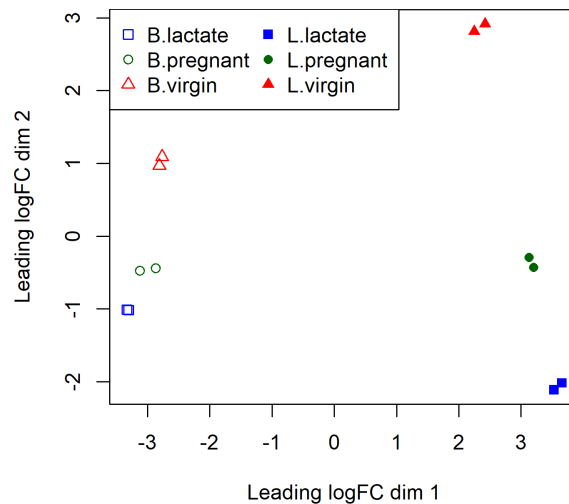
4.4.5 Data exploration

The data can be explored by generating multi-dimensional scaling (MDS) plots. This visualizes the differences between the expression profiles of different samples in two dimensions.


```

> points <- c(0,1,2,15,16,17)
> colors <- rep(c("blue", "darkgreen", "red"), 2)
> plotMDS(y, col=colors[group], pch=points[group])
> legend("topleft", legend=levels(group), pch=points, col=colors, ncol=2)

```



Replicate samples from the same group cluster together in the plot, while samples from different groups form separate clusters. This indicates that the differences between groups are larger than those within groups, i.e., differential expression is greater than the variance and can be detected. The distance between basal samples on the left and luminal cells on the right is about 6 units, corresponding to a leading fold change of about 64-fold ($2^6 = 64$) between basal and luminal. The expression differences between virgin, pregnant and lactating are greater for luminal cells than for basal.

4.4.6 The design matrix

The experimental design for this study can be parametrized with a one-way layout, whereby one coefficient is assigned to each group. The design matrix contains the predictors for each sample and is constructed using the code below.

```

> design <- model.matrix(~ 0 + group)
> colnames(design) <- levels(group)
> design

```

	B.lactate	B.pregnant	B.virgin	L.lactate	L.pregnant	L.virgin
1	0	0	1	0	0	0

```

2      0      0      1      0      0      0
3      0      1      0      0      0      0
4      0      1      0      0      0      0
5      1      0      0      0      0      0
6      1      0      0      0      0      0
7      0      0      0      0      0      1
8      0      0      0      0      0      1
9      0      0      0      0      1      0
10     0      0      0      0      1      0
11     0      0      0      1      0      0
12     0      0      0      1      0      0
attr(,"assign")
[1] 1 1 1 1 1 1
attr(,"contrasts")
attr(,"contrasts")$group
[1] "contr.treatment"

```

4.4.7 Estimating the dispersion

The NB dispersion is estimated using the `estimateDisp` function. This returns the `DGEList` object with additional entries for the estimated NB dispersions for all gene. These estimates can be visualized with `plotBCV`, which shows the root-estimate, i.e., the biological coefficient of variation for each gene.

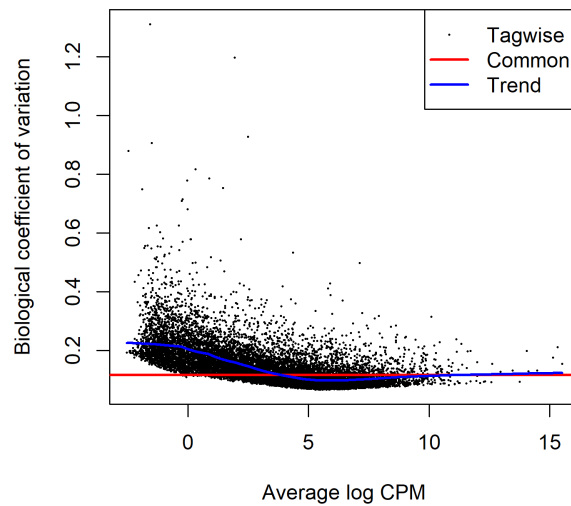
```

> y <- estimateDisp(y, design, robust=TRUE)
> y$common.dispersion

[1] 0.0134

> plotBCV(y)

```



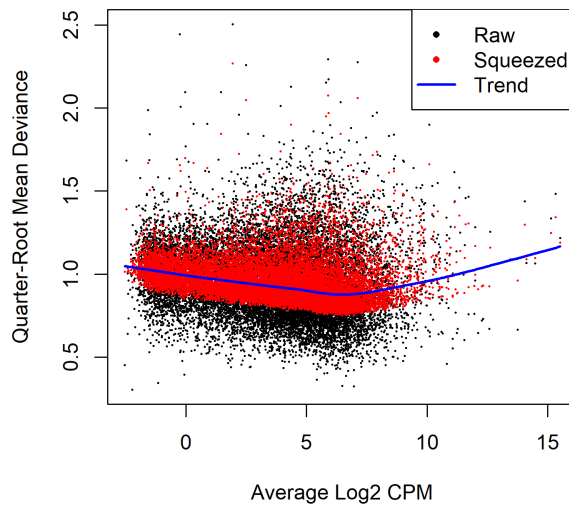
Note that only the trended dispersion is used under the quasi-likelihood (QL) pipeline. The tagwise and common estimates are shown here but will not be used further.

For the QL dispersions, estimation can be performed using the `glmQLFit` function. This returns a `DGEGLM` object containing the estimated values of the GLM coefficients for each gene, as well as the fitted mean-QL dispersion trend, the squeezed QL estimates and the prior degrees of freedom (df). These can be visualized with the `plotQLDisp` function.

```
> fit <- glmQLFit(y, design, robust=TRUE)
> head(fit$coefficients)
```

	B.lactate	B.pregnant	B.virgin	L.lactate	L.pregnant	L.virgin
497097	-11.14	-12.02	-11.23	-19.0	-19.03	-19.0
20671	-12.77	-12.51	-12.15	-14.5	-14.31	-14.1
27395	-11.27	-11.30	-11.53	-10.6	-10.87	-10.9
18777	-10.15	-10.21	-10.77	-10.1	-10.39	-10.4
21399	-9.89	-9.74	-9.79	-10.2	-9.97	-10.0
58175	-16.16	-14.85	-15.99	-13.3	-12.29	-12.1

```
> plotQLDisp(fit)
```



Setting `robust=TRUE` in `glmQLFit` is strongly recommended [24]. Setting `robust=TRUE` in `estimateDisp` has no effect on the downstream analysis, but is nevertheless very useful as it identifies genes that are outliers from the mean-NB dispersion trend.

4.4.8 Differential expression

We test for significant differential expression in each gene, using the QL F-test. The contrast of interest can be specified using the `makeContrasts` function. Here, genes are tested for DE between the basal pregnant and lactating groups. This is done by defining the null hypothesis as `B.pregnant - B.lactate = 0`.

```
> con <- makeContrasts(B.pregnant - B.lactate, levels=design)
> qlf <- glmQLFTest(fit, contrast=con)
```

The top set of most significant genes can be examined with `topTags`. Here, a positive log-fold change represents genes that are up in `B.pregnant` over `B.lactate`. Multiplicity correction is performed by applying the Benjamini-Hochberg method on the p -values, to control the false discovery rate (FDR).

```
> topTags(qlf)
```

```
Coefficient: -1*B.lactate 1*B.pregnant
      ENTREZID SYMBOL logFC logCPM  F  PValue      FDR
12992    12992 Csn1s2b -6.09  10.18 421 4.86e-11 7.68e-07
211577  211577 Mrgprf -5.15   2.74 345 1.30e-10 8.05e-07
```

226101	226101	Myof	-2.32	6.44	322	1.97e-10	8.05e-07
381290	381290	Atp2b4	-2.14	6.14	320	2.04e-10	8.05e-07
140474	140474	Muc4	7.17	6.05	308	2.64e-10	8.34e-07
231830	231830	Mical12	2.25	5.18	282	4.47e-10	1.18e-06
24117	24117	Wif1	1.82	6.76	260	7.30e-10	1.65e-06
12740	12740	Cldn4	5.32	9.87	298	8.88e-10	1.71e-06
21953	21953	Tnni2	-5.75	3.86	313	9.76e-10	1.71e-06
231991	231991	Creb5	-2.57	4.87	241	1.16e-09	1.83e-06

The top gene *Csn1s2b* has a large negative log2-fold-change, showing that it is far more highly expressed in lactating than pregnant mice. This gene is known to be a major source of protein in milk.

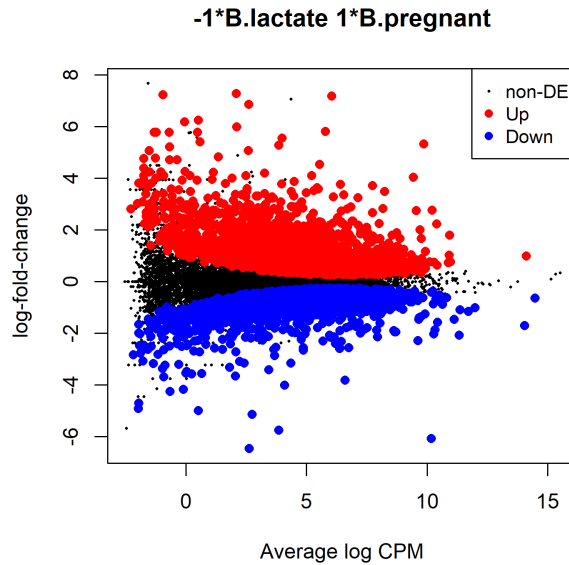
The total number of DE genes in each direction at a FDR of 5% can be examined with `decideTests`. There are in fact nearly 4500 DE genes an FDR cut-off of 5% in this comparison:

```
> summary(decideTests(qlf))

      -1*B.lactate 1*B.pregnant
-1                2505
0                 10529
1                 2770
```

The differential expression test results can be visualized using an MD plot. The log-fold change for each gene is plotted against the average abundance, i.e., `logCPM` in the result table above. Significantly DE genes at a FDR of 5% are highlighted.

```
> plotMD(qlf)
```



We use `glmTreat` to narrow down the list of DE genes and focus on genes that are more biologically meaningful. We test whether the differential expression is significantly above a log₂-fold-change of log₂ 1.2, i.e., a fold-change of 1.2.

```
> tr <- glmTreat(fit, contrast=con, lfc=log2(1.2))
> topTags(tr)
```

```
Coefficient: -1*B.lactate 1*B.pregnant
```

	ENTREZID	SYMBOL	logFC	unshrunk.logFC	logCPM	PValue	FDR
12992	12992	Csn1s2b	-6.09	-6.09	10.18	5.13e-11	8.11e-07
211577	211577	Mrgprf	-5.15	-5.15	2.74	1.40e-10	9.78e-07
226101	226101	Myof	-2.32	-2.32	6.44	2.82e-10	9.78e-07
140474	140474	Muc4	7.17	7.34	6.05	2.92e-10	9.78e-07
381290	381290	Atp2b4	-2.14	-2.14	6.14	3.09e-10	9.78e-07
231830	231830	Mical12	2.25	2.25	5.18	6.55e-10	1.72e-06
12740	12740	Cldn4	5.32	5.32	9.87	9.41e-10	2.02e-06
21953	21953	Tnni2	-5.75	-5.76	3.86	1.02e-09	2.02e-06
24117	24117	Wif1	1.82	1.82	6.76	1.30e-09	2.28e-06
231991	231991	Creb5	-2.57	-2.57	4.87	1.54e-09	2.44e-06

Around 3000 genes are detected as DE with fold-change significantly above 1.2 at an FDR cut-off of 5%.

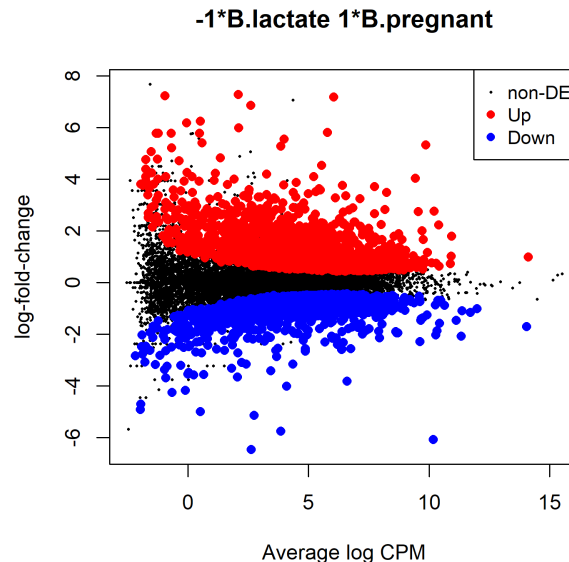
```
> summary(decideTests(tr))

-1*B.lactate 1*B.pregnant
-1              1428
```

```
0          12566
1          1810
```

The test results are visualized in the following smear plot. Genes that are significantly DE above a fold-change of 1.2 at an FDR of 5% are highlighted in red.

```
> plotMD(tr)
```



4.4.9 ANOVA-like testing

The differential expression analysis of two-group comparison can be easily extended to comparisons between three or more groups. This is done by creating a matrix of contrasts, where each column represents a contrast between two groups of interest. In this manner, users can perform a one-way analysis of variance (ANOVA) for each gene.

As an example, suppose we want to compare the three groups in the luminal population, i.e., virgin, pregnant and lactating. An appropriate contrast matrix can be created as shown below, to make pairwise comparisons between all three groups.

```
> con <- makeContrasts(
+   L.PvsL = L.pregnant - L.lactate,
+   L.VvsL = L.virgin - L.lactate,
+   L.VvsP = L.virgin - L.pregnant, levels=design)
```

The QL F-test is then applied to identify genes that are DE among the three groups. This combines the three pairwise comparisons into a single F-statistic and p -value. The top set of significant genes can be displayed with `topTags`.

```
> anov <- glmQLFTest(fit, contrast=con)
> topTags(anov)
```

Coefficient: LR test on 2 degrees of freedom

	ENTREZID	SYMBOL	logFC.L.PvsL	logFC.L.VvsL	logFC.L.VvsP	logCPM	F	PValue	FDR
19242	19242	Ptn	-1.54	7.26	8.801	7.97	2387	3.77e-17	5.96e-13
13645	13645	Egf	-5.36	-7.22	-1.864	3.67	1126	4.46e-15	3.22e-11
52150	52150	Kcnk6	-2.42	-7.00	-4.578	5.91	1020	8.40e-15	3.22e-11
15439	15439	Hp	1.08	5.42	4.336	4.93	992	1.00e-14	3.22e-11
12992	12992	Csn1s2b	-8.55	-11.36	-2.810	10.18	1050	1.03e-14	3.22e-11
14183	14183	Fgfr2	-1.15	3.95	5.096	7.38	953	1.29e-14	3.22e-11
20856	20856	Stc2	-1.81	3.19	5.006	6.10	917	1.64e-14	3.22e-11
11941	11941	Atp2b2	-7.37	-10.56	-3.190	6.60	1133	1.79e-14	3.22e-11
13358	13358	Slc25a1	-4.13	-4.91	-0.784	7.49	888	2.01e-14	3.22e-11
17068	17068	Ly6d	3.42	9.24	5.820	4.68	886	2.04e-14	3.22e-11

Note that the three contrasts of pairwise comparisons are linearly dependent. Constructing the contrast matrix with any two of the contrasts would be sufficient to specify an ANOVA test. For instance, the contrast matrix shown below produces the same test results but with a different column of log-fold changes.

```
> con <- makeContrasts(
+   L.PvsL = L.pregnant - L.lactate,
+   L.VvsP = L.virgin - L.pregnant, levels=design)
```

4.4.10 Gene ontology analysis

Further analyses are required to interpret the differential expression results in a biological context. One common downstream procedure is a gene ontology (GO) enrichment analysis.

Suppose we want to identify GO terms that are over-represented in the basal lactating group compared to the basal pregnancy group. This can be achieved by applying the `goana` function to the differential expression results of that comparison. The top set of most enriched GO terms can be viewed with the `topGO` function.

```
> con <- makeContrasts(B.lactate - B.pregnant, levels=design)
> qlf <- glmQLFTest(fit, contrast=con)
> go <- goana(qlf, species = "Mm")
> topGO(go, n=30)
```


	Term	Ont	N	Up	Down	P.Up	P.Down
GO:0003723	RNA binding	MF	1454	156	468	1.000	2.63e-47
GO:0042254	ribosome biogenesis	BP	244	6	142	1.000	6.04e-47
GO:1990904	ribonucleoprotein complex	CC	742	56	287	1.000	5.57e-45
GO:0022613	ribonucleoprotein complex biogenesis	BP	361	23	178	1.000	9.59e-45
GO:0030529	intracellular ribonucleoprotein complex	CC	741	56	286	1.000	1.32e-44
GO:0022626	cytosolic ribosome	CC	107	1	79	1.000	1.53e-37
GO:0006364	rRNA processing	BP	171	2	103	1.000	3.80e-36
GO:0016072	rRNA metabolic process	BP	197	8	111	1.000	4.41e-35
GO:0003676	nucleic acid binding	MF	2858	426	715	0.999	3.96e-30
GO:0032991	macromolecular complex	CC	4108	603	951	1.000	2.98e-28
GO:0005840	ribosome	CC	212	4	106	1.000	1.21e-27
GO:0022625	cytosolic large ribosomal subunit	CC	58	0	47	1.000	5.65e-26
GO:0034470	ncRNA processing	BP	294	13	128	1.000	7.62e-26
GO:0044391	ribosomal subunit	CC	180	1	93	1.000	9.21e-26
GO:0070013	intracellular organelle lumen	CC	3239	480	772	1.000	1.10e-25
GO:0031974	membrane-enclosed lumen	CC	3242	480	772	1.000	1.49e-25
GO:0043233	organelle lumen	CC	3242	480	772	1.000	1.49e-25
GO:0005730	nucleolus	CC	743	103	243	0.988	4.07e-25
GO:0003735	structural constituent of ribosome	MF	145	1	80	1.000	8.52e-25
GO:0034660	ncRNA metabolic process	BP	387	27	152	1.000	9.20e-25
GO:0044445	cytosolic part	CC	217	20	103	1.000	1.35e-24
GO:0006396	RNA processing	BP	724	62	237	1.000	1.45e-24
GO:1901363	heterocyclic compound binding	MF	4367	669	979	0.999	8.18e-24
GO:0097159	organic cyclic compound binding	MF	4415	677	984	0.999	5.11e-23
GO:0031981	nuclear lumen	CC	2938	454	699	0.984	1.42e-22
GO:0006412	translation	BP	512	51	178	1.000	9.17e-22
GO:0043043	peptide biosynthetic process	BP	529	52	182	1.000	1.17e-21
GO:0030684	preribosome	CC	71	0	49	1.000	1.20e-21
GO:0044428	nuclear part	CC	3324	517	769	0.984	1.80e-21
GO:0042273	ribosomal large subunit biogenesis	BP	62	1	45	1.000	2.04e-21

The row names of the output are the universal identifiers of the GO terms, with one term per row. The **Term** column gives the names of the GO terms. These terms cover three domains - biological process (BP), cellular component (CC) and molecular function (MF), as shown in the **Ont** column. The **N** column represents the total number of genes that are annotated with each GO term. The **Up** and **Down** columns represent the number of genes with the GO term that are significantly up- and down-regulated in this differential expression comparison, respectively. The **P.Up** and **P.Down** columns contain the *p*-values for over-representation of the GO term across the set of up- and down-regulated genes, respectively. The output table is sorted by the minimum of **P.Up** and **P.Down** by default.

The **goana** function uses the NCBI RefSeq annotation. Therefore, the Entrez Gene identifier (ID) should be supplied for each gene as the row names of **qlf**.

4.4.11 Gene set testing

Another downstream step uses the rotation gene set test (ROAST) [36]. Given a set of genes, we can test whether the majority of the genes in the set are DE across the contrast of interest. It is useful when the specified set contains all genes involved in some pathway or process.

In our case study, suppose we are interested in three GO terms related to cytokinesis. Each term will be used to define a set containing all genes that are annotated with that term. The names of these terms can be viewed as shown below.

```
> library(GO.db)
> cyt.go <- c("GO:0032465", "GO:0000281", "GO:0000920")
> term <- select(GO.db, keys=cyt.go, columns="TERM")
> term
```

	GOID	TERM
1	GO:0032465	regulation of cytokinesis
2	GO:0000281	mitotic cytokinesis
3	GO:0000920	cell separation after cytokinesis

We construct a list of three components, each of which is a vector of Entrez Gene IDs for all genes annotated with one of the GO terms. We then convert the Gene IDs into row indices of the `fit` object using the function `ids2indices`.

```
> Rkeys(org.Mm.egGO2ALLEGs) <- cyt.go
> ind <- ids2indices(as.list(org.Mm.egGO2ALLEGs), fit$genes$ENTREZID)
```

We proceed to run ROAST on the defined gene sets for the contrast of interest. Suppose the comparison of interest is between the virgin and lactating groups in the basal population. We use `fry` to test for multiple gene sets.

```
> con <- makeContrasts(B.virgin-B.lactate, levels=design)
> fr <- fry(y, index=ind, design=design, contrast=con)
> fr
```

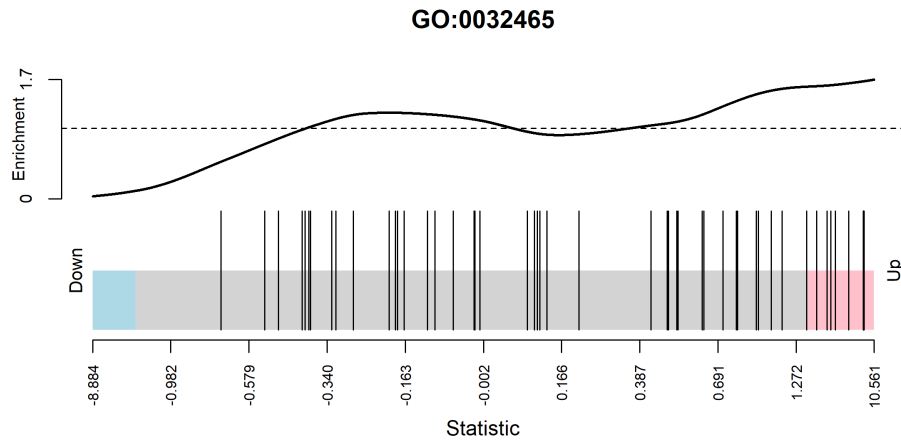
	NGenes	Direction	PValue	FDR	PValue.Mixed	FDR.Mixed
GO:0032465	49	Up	0.000552	0.00165	3.82e-06	6.96e-06
GO:0000920	16	Down	0.001839	0.00211	4.64e-06	6.96e-06
GO:0000281	37	Up	0.002114	0.00211	1.20e-05	1.20e-05

Each row corresponds to a single gene set, i.e., GO term. The `NGenes` column gives the number of genes in each set. The net direction of change is determined from the significance of changes in each direction, and is shown in the `Direction` column. The `PValue` provides evidence for whether the majority of genes in the set are DE in the specified direction, whereas

the `PValue.Mixed` tests for differential expression in any direction. FDRs are computed from the corresponding p -values across all sets.

A barcode plot can be produced with the `barcodeplot` function to visualize the results for any particular set. In this case, visualization is performed for the gene set defined by GO:0032465. Here, genes are represented by bars and are ranked from left to right by decreasing log-fold change. This forms the barcode-like pattern. The line above the barcode shows the relative local enrichment of the vertical bars in each part of the plot. This particular plot suggests that most genes in this set are up-regulated in the virgin group compared to the lactating group.

```
> res <- glmQLFTest(fit, contrast=con)
> barcodeplot(res$table$logFC, ind[[1]], main=names(ind)[1])
```



4.4.12 Setup

This analysis was conducted on:

```
> sessionInfo()
```

```
R version 3.4.2 (2017-09-28)
Platform: x86_64-w64-mingw32/x64 (64-bit)
Running under: Windows 10 x64 (build 15063)
```

```
Matrix products: default
```

```
locale:
```

```
[1] LC_COLLATE=English_Australia.1252 LC_CTYPE=English_Australia.1252
[3] LC_MONETARY=English_Australia.1252 LC_NUMERIC=C
[5] LC_TIME=English_Australia.1252
```

attached base packages:

```
[1] parallel stats4 stats graphics grDevices utils datasets methods base
```

other attached packages:

```
[1] GO.db_3.4.1 org.Mm.eg.db_3.4.1 tweedEseqCountData_1.14.0
[4] NBPSeg_0.3.0 org.Hs.eg.db_3.4.1 AnnotationDbi_1.38.2
[7] IRanges_2.10.3 S4Vectors_0.14.5 Biobase_2.36.2
[10] BiocGenerics_0.22.0 edgeR_3.19.8 limma_3.32.7
```

loaded via a namespace (and not attached):

```
[1] Rcpp_0.12.13 compiler_3.4.2 plyr_1.8.4 tools_3.4.2 digest_0.6.12
[6] statmod_1.4.30 bit_1.1-12 RSQLite_2.0 memoise_1.1.0 tibble_1.3.4
[11] gtable_0.2.0 lattice_0.20-35 pkgconfig_2.0.1 rlang_0.1.2 DBI_0.7
[16] stringr_1.2.0 locfit_1.5-9.1 bit64_0.9-7 grid_3.4.2 qvalue_2.8.0
[21] ggplot2_2.2.1 reshape2_1.4.2 blob_1.1.0 magrittr_1.5 scales_0.5.0
[26] splines_3.4.2 colorspace_1.3-2 stringi_1.1.5 lazyeval_0.2.0 munsell_0.4.3
```

4.5 Differential splicing after Pasilla knockdown

4.5.1 Introduction

The RNA-Seq data of this case study was produced by Brooks *et al* [3]. *Drosophila melanogaster* was used as a model system to study the proteins NOVA1 and NOVA2 which are known to regulate splicing in mammals. In particular, an RNA interference system (RNAi) was used to knock down the expression of the *D. melanogaster* ortholog of NOVA1 and NOVA2, which is Pasilla.

The experiment compared treated and untreated cells from the S2-DRSC cell line. In this case study we are interested in exons and genes that are differentially expressed after Pasilla knockdown, as well as genes that are differentially spliced in the knockdown samples as compared to wildtype.

4.5.2 RNA-Seq samples

The RNA-Seq data of the six samples were deposited on GEO <http://www.ncbi.nlm.nih.gov/geo>. The GEO accession numbers and titles were prepared in a csv file:

```
> library(edgeR)
> GEO <- readTargets("GEO-samples.csv", sep=",")
> GEO
```

```
      GEO      Title Pasilla
1 GSM461176 S2_DRSC_Untreated-1 Normal
```

```

2 GSM461177 S2_DRSC_Untreated-3 Normal
3 GSM461178 S2_DRSC_Untreated-4 Normal
4 GSM461179 S2_DRSC_CG8144_RNAi-1 Down
5 GSM461180 S2_DRSC_CG8144_RNAi-3 Down
6 GSM461181 S2_DRSC_CG8144_RNAi-4 Down

```

There are three untreated biological samples, in which Pasilla should be expressed at normal levels, and three treated biological samples, in which Pasilla should be expressed at reduced levels.

While GEO records the sample information, the sequencing data file are actually held on the NCBI Short Read Archive (SRA). The RNA samples were sequenced on an Illumina Genome Analyzer II. Multiple sequencing runs were used for several of the samples, resulting in a total of 20 SRA files:

```

> SRA <- readTargets("SRA-Files.csv", sep=",")
> SRA

```

	SRA	GEO	Title	RunDate	FlowCellID	Type	ReadLength
1	SRR031708	GSM461176	S2_DRSC_Untreated-1	7/15/08	308T2AAXX	SE	45
2	SRR031709	GSM461176	S2_DRSC_Untreated-1	7/15/08	308T2AAXX	SE	45
3	SRR031710	GSM461176	S2_DRSC_Untreated-1	8/15/08	30AYWAAXX	SE	45
4	SRR031711	GSM461176	S2_DRSC_Untreated-1	8/15/08	30AYWAAXX	SE	45
5	SRR031712	GSM461176	S2_DRSC_Untreated-1	8/15/08	30AYWAAXX	SE	45
6	SRR031713	GSM461176	S2_DRSC_Untreated-1	8/15/08	30AYWAAXX	SE	45
7	SRR031714	GSM461177	S2_DRSC_Untreated-3	11/14/08	30MNEAAXX	PE	37
8	SRR031715	GSM461177	S2_DRSC_Untreated-3	12/23/08	30M2BAAXX	PE	37
9	SRR031716	GSM461178	S2_DRSC_Untreated-4	12/23/08	30M2BAAXX	PE	37
10	SRR031717	GSM461178	S2_DRSC_Untreated-4	12/23/08	30M2BAAXX	PE	37
11	SRR031718	GSM461179	S2_DRSC_CG8144_RNAi-1	7/15/08	308T2AAXX	SE	45
12	SRR031719	GSM461179	S2_DRSC_CG8144_RNAi-1	7/18/08	308UEAAXX	SE	45
13	SRR031720	GSM461179	S2_DRSC_CG8144_RNAi-1	8/15/08	30AYWAAXX	SE	45
14	SRR031721	GSM461179	S2_DRSC_CG8144_RNAi-1	8/15/08	30AYWAAXX	SE	45
15	SRR031722	GSM461179	S2_DRSC_CG8144_RNAi-1	8/15/08	30AYWAAXX	SE	45
16	SRR031723	GSM461179	S2_DRSC_CG8144_RNAi-1	8/21/08	308A0AAXX	SE	45
17	SRR031724	GSM461180	S2_DRSC_CG8144_RNAi-3	12/23/08	30M2BAAXX	PE	37
18	SRR031725	GSM461180	S2_DRSC_CG8144_RNAi-3	12/23/08	30M2BAAXX	PE	37
19	SRR031726	GSM461181	S2_DRSC_CG8144_RNAi-4	12/23/08	30M2BAAXX	PE	37
20	SRR031727	GSM461181	S2_DRSC_CG8144_RNAi-4	12/23/08	30M2BAAXX	PE	37

The last two columns of the above target file indicate whether the samples are single end (SE) sequencing with 45 base-pair reads or paired end (PE) sequencing with 37 bp reads.

4.5.3 Read alignment and processing

The SRA format files were first converted to FASTQ format using the SRA Toolkit. Then an index file of the *D. melanogaster* reference genome was built in Rsubread[13] using the FASTA

files downloaded from `ftp://ftp.ncbi.nlm.nih.gov/genomes/Drosophila_melanogaster/RELEASE_5_48`. Finally, reads were aligned to the reference *D. melanogaster* genome using Rsubread.

Next we counted the number of reads or fragments overlapping each annotated exon of each gene. GFF files containing gene and exon annotation were downloaded from `ftp://ftp.ncbi.nlm.nih.gov/genomes/Drosophila_melanogaster/RELEASE_5_48`. The five *.gff files, one for each chromosome, were concatenated into one file, and repeated exons instances of the same exon (same start and stop position) were removed to create a data frame of start/stop positions called `unique.gff`. The single end (SE) reads were counted by:

```
> fc_SE <- featureCounts(SE_bam_files, annot.ext="unique.gff",
+   isGTFAnnotationFile=TRUE, GTF.featureType="exon", GTF.attrType="ID",
+   useMetaFeatures=FALSE, allowMultiOverlap=TRUE)
```

where `SE_bam_files` is a vector of BAM file names for the SE reads. The paired end (PE) reads were counted by:

```
> fc_PE <- featureCounts(PE_bam_files, annot.ext="unique.gff",
+   isGTFAnnotationFile=TRUE, GTF.featureType="exon", GTF.attrType="ID",
+   useMetaFeatures=FALSE, allowMultiOverlap=TRUE, isPairedEnd=TRUE)
```

where `PE_bam_files` is a vector of BAM file names for the PE reads.

4.5.4 Count loading and annotation

We create a `DGEList` object as follows

```
> y.all <- DGEList(counts=cbind(fc_SE$counts, fc_PE$counts), genes=fc_SE$annotation)
> dim(y.all)
```

```
[1] 74184    20
```

```
> head(y.all$genes)
```

	GeneID	Chr	Start	End	Strand	Length
138088	30970	NC_004354.3	138094	139379	-	1286
138087	30970	NC_004354.3	139445	139611	-	167
138089	30970	NC_004354.3	139445	139889	-	445
138086	30970	NC_004354.3	139713	139889	-	177
138091	30971	NC_004354.3	140011	141629	+	1619
138092	30971	NC_004354.3	142415	144271	+	1857

The annotation includes Entrez ID and the length, chromosome and start and stop position of each exon. We resort the samples back to original SRA order and collapse the data so that there is a single column for each GEO sample by summing the counts over the technical replicates:

```

> y.all <- y.all[, SRA$SRA]
> y <- sumTechReps(y.all, ID=SRA$GEO)
> y$samples

      group lib.size norm.factors
GSM461176      1 31007529          1
GSM461177      1 13040952          1
GSM461178      1 15030819          1
GSM461179      1 28143539          1
GSM461180      1 14901292          1
GSM461181      1 16264066          1

> colnames(y) <- c("N1", "N3", "N4", "D1", "D3", "D4")

```

Annotation for *D.melanogaster* genes was downloaded from ftp://ftp.ncbi.nlm.nih.gov/gene/DATA/GENE_INFO/Invertebrates. We now add selected annotation columns to the DGEList object:

```

> ncbi.L1 <- readLines("Drosophila_melanogaster.gene_info", n = 1)
> ncbi.colname <- unlist(strsplit(substring(ncbi.L1, 10, 234), ' '))
> ncbi <- read.delim("Drosophila_melanogaster.gene_info", skip=1,
+   header=FALSE, stringsAsFactors=FALSE)
> colnames(ncbi) <- ncbi.colname
> m <- match(y$genes$GeneID, ncbi$GeneID)
> y$genes$Chr <- ncbi$chromosome[m]
> y$genes$Symbol <- ncbi$Symbol[m]
> y$genes$Strand <- NULL
> head(y$genes)

```

	GeneID	Chr	Start	End	Length	Symbol
138088	30970	X	138094	139379	1286	CG3038
138087	30970	X	139445	139611	167	CG3038
138089	30970	X	139445	139889	445	CG3038
138086	30970	X	139713	139889	177	CG3038
138091	30971	X	140011	141629	1619	G9a
138092	30971	X	142415	144271	1857	G9a

4.5.5 Filtering and normalization

Here, an exon is only retained if it is expressed at a count-per-million (CPM) above 1 in at least 3 samples.

```

> keep <- rowSums(cpm(y) > 1) >=3
> summary(keep)

```

```

      Mode   FALSE   TRUE
logical 36926   37258

> y <- y[keep, , keep.lib.sizes=FALSE]

```

TMM normalization is performed to eliminate composition biases between libraries.

```

> y <- calcNormFactors(y)
> y$samples

      group lib.size norm.factors
N1        1 30872843      0.955
N3        1 12962245      1.031
N4        1 14908555      0.976
D1        1 27989806      1.005
D3        1 14760887      1.022
D4        1 16172265      1.014

```

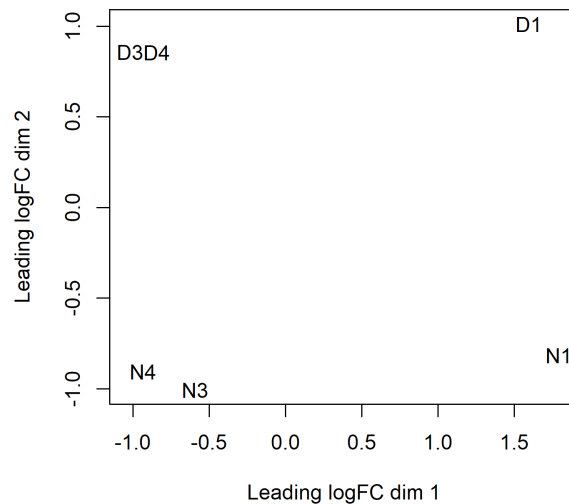
4.5.6 Data exploration

The data can be explored by generating multi-dimensional scaling (MDS) plots. This visualizes the differences between the expression profiles of different samples in two dimensions.

```

> plotMDS(y)

```



The MDS plot shows clear separation of the Pasilla down vs normal samples, but also a batch effect associated with sequencing type and date.

4.5.7 The design matrix

To account for the batch effect observed from the MDS plot, we create a design matrix as follows:

```
> Batch <- factor(c(1,3,4,1,3,4))
> Pasilla <- factor(GEO$Pasilla, levels=c("Normal","Down"))
> design <- model.matrix(~ Batch + Pasilla)
> design
```

	(Intercept)	Batch3	Batch4	PasillaDown
1	1	0	0	0
2	1	1	0	0
3	1	0	1	0
4	1	0	0	1
5	1	1	0	1
6	1	0	1	1

```
attr("assign")
[1] 0 1 1 2
attr("contrasts")
attr("contrasts")$Batch
[1] "contr.treatment"

attr("contrasts")$Pasilla
[1] "contr.treatment"
```

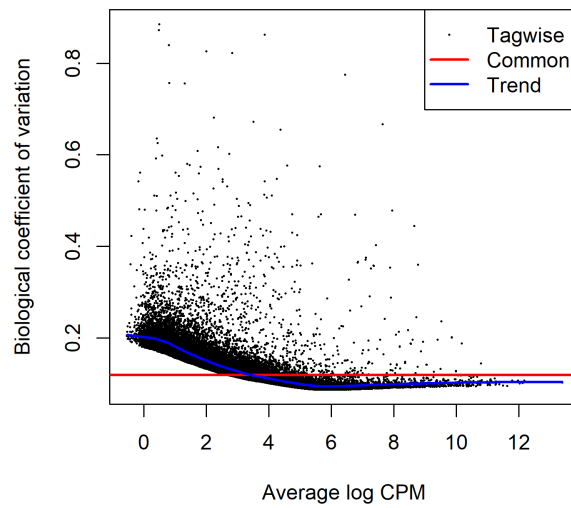
4.5.8 Estimating the dispersion

We estimate NB dispersions using the `estimateDisp` function. The estimated dispersions can be visualized with `plotBCV`.

```
> y <- estimateDisp(y, design, robust=TRUE)
> y$common.dispersion

[1] 0.0141

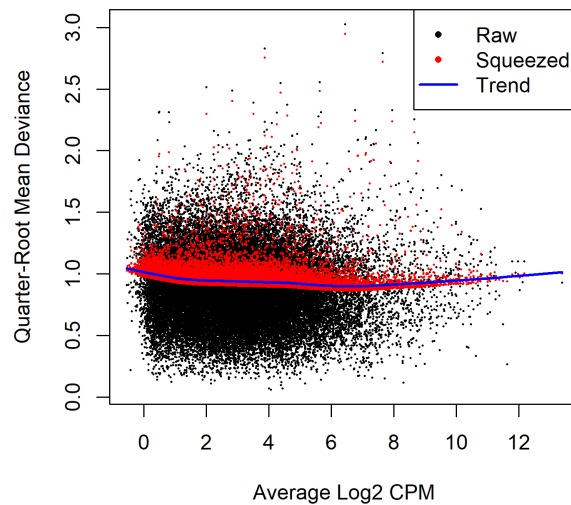
> plotBCV(y)
```



Note that only the trended dispersion is used under the quasi-likelihood (QL) pipeline. The tagwise and common estimates are shown here but will not be used further.

For the QL dispersions, estimation can be performed using the `glmQLFit` function. The results can be visualized with the `plotQLDisp` function.

```
> fit <- glmQLFit(y, design, robust=TRUE)
> plotQLDisp(fit)
```



4.5.9 Differential expression

We test for differentially expressed exons between Pasilla knockdown and normal using the QL F-test.

```
> qlf <- glmQLFTest(fit, coef=4)
```

The top set of most significant exons can be examined with `topTags`. Here, a positive log-fold change represents exons that are up in Pasilla knockdown over normal. Multiplicity correction is performed by applying the Benjamini-Hochberg method on the p -values, to control the false discovery rate (FDR).

```
> topTags(qlf)
```

```
Coefficient: PasillaDown
```

	GeneID	Chr	Start	End	Length	Symbol	logFC	logCPM	F	PValue	FDR
150709	32007	X	10674926	10676128	1203	sesB	-3.26	7.21 949	7.41e-15	1.39e-10	
150713	32007	X	10675026	10676128	1103	sesB	-3.26	7.21 948	7.46e-15	1.39e-10	
150697	32008	X	10672987	10673728	742	Ant2	2.85	6.14 863	1.48e-14	1.84e-10	
91614	42865	3R	19970915	19971592	678	Kal1	-4.43	3.81 756	3.88e-14	3.61e-10	
107856	44030	3L	2561932	2562843	912	msn	-2.46	5.59 615	1.74e-13	1.30e-09	
150702	32008	X	10674230	10674694	465	Ant2	2.97	4.55 575	2.83e-13	1.33e-09	
150695	32008	X	10674230	10674559	330	Ant2	2.96	4.55 574	2.86e-13	1.33e-09	
70750	44258	3R	5271691	5272628	938	ps	-2.27	5.95 572	2.97e-13	1.33e-09	
11333	44548	2R	6407125	6408782	1658	lola	2.26	6.15 565	3.21e-13	1.33e-09	
96433	43230	3R	22697648	22697717	70	BM-40-SPARC	-2.17	6.65 542	4.37e-13	1.63e-09	

The total number of DE exons in each direction at a FDR of 5% can be examined with `decideTests`.

```
> is.de <- decideTests(qlf, p.value=0.05)
> summary(is.de)
```

```
      PasillaDown
-1             2059
0             33385
1              1814
```

4.5.10 Alternative splicing

We detect alternative splicing by testing for differential exon usage between Pasilla knockdown and normal in each gene.

```
> sp <- diffSpliceDGE(fit, coef=4, geneid="GeneID", exonid="Start")
```

```
Total number of exons: 37258
Total number of genes: 8192
Number of genes with 1 exon: 1619
Mean number of exons in a gene: 5
Max number of exons in a gene: 56
```

Two testing methods at the gene-level are provided. The Simes' method is likely to be more powerful when only a minority of the exons for a gene are differentially spliced. The F-tests are likely to be powerful for genes in which several exons are differentially spliced.

The top spliced genes under the Simes' method are shown below:

```
> topSpliceDGE(sp, test="Simes", n=20)
```

	GeneID	Chr	Symbol	NExons	P.Value	FDR
141235	45320	X	trol	44	1.64e-30	1.08e-26
11214	44548	2R	lola	30	4.28e-30	1.41e-26
95956	44448	3R	scrib	35	1.10e-20	2.40e-17
107810	44030	3L	msn	24	1.15e-18	1.89e-15
19880	36773	2R	Dg	15	2.17e-18	2.86e-15
16060	36542	2R	shot	38	2.03e-17	2.22e-14
82117	42130	3R	osa	17	2.50e-17	2.35e-14
32242	37893	2R	slik	19	2.59e-15	2.13e-12
131170	40205	3L	CG42674	16	3.88e-15	2.84e-12
163416	32817	X	CrebB-17A	12	1.00e-14	6.58e-12
150694	32008	X	Ant2	5	1.02e-13	6.07e-11
110493	38491	3L	ens	16	1.88e-13	1.03e-10
41795	3771968	2L	Msp-300	33	2.80e-12	1.41e-09
115767	38879	3L	pbl	12	3.84e-12	1.80e-09
2032	2768716	2R	mim	25	8.98e-12	3.93e-09
526	35494	2R	laccase2	9	2.81e-11	1.11e-08
150710	32007	X	sesB	7	2.88e-11	1.11e-08
166094	33098	X	CG32521	8	4.29e-11	1.57e-08
52823	34652	2L	vir-1	7	8.31e-11	2.88e-08
85970	42428	3R	Stat92E	14	4.41e-10	1.45e-07

The top spliced genes identified by F-tests are shown below:

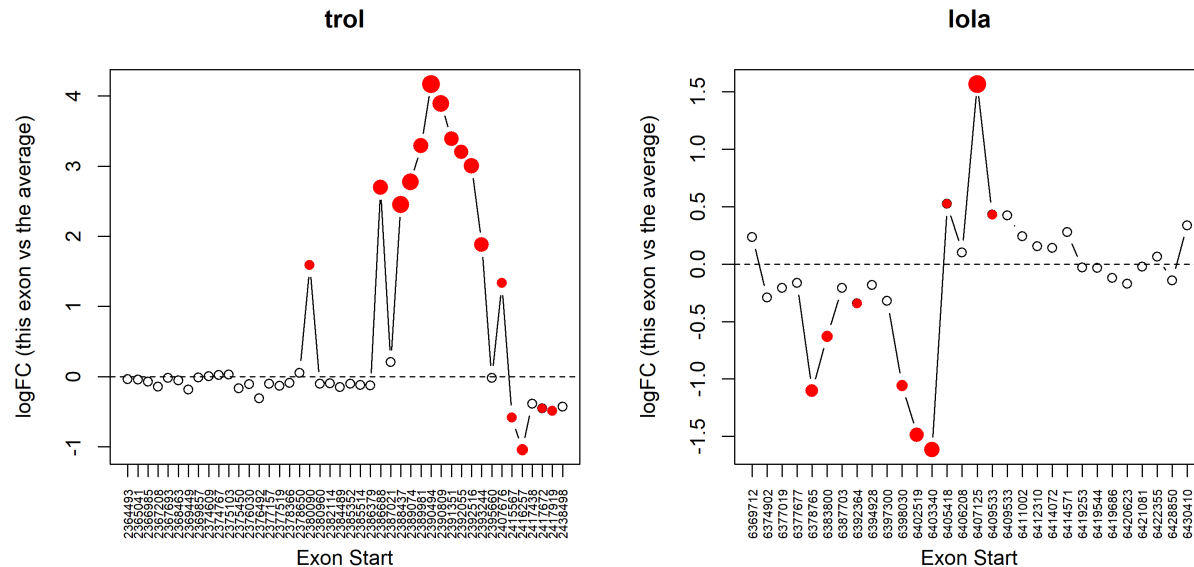
```
> topSpliceDGE(sp, test="gene", n=20)
```

	GeneID	Chr	Symbol	NExons	gene.F	P.Value	FDR
141235	45320	X	trol	44	52.5	2.53e-51	1.66e-47
11214	44548	2R	lola	30	42.7	6.84e-34	2.25e-30
41795	3771968	2L	Msp-300	33	22.7	2.34e-27	5.13e-24
95956	44448	3R	scrib	35	17.2	1.08e-24	1.78e-21
16060	36542	2R	shot	38	11.1	6.90e-20	9.07e-17

32242	37893	2R	slik	19	25.8	1.22e-18	1.34e-15
166094	33098	X	CG32521	8	64.1	1.14e-14	1.07e-11
19880	36773	2R	Dg	15	21.8	2.57e-14	2.11e-11
2032	2768716	2R	mim	25	10.7	8.49e-14	6.20e-11
107810	44030	3L	msn	24	10.6	3.12e-13	2.05e-10
150694	32008	X	Ant2	5	108.1	4.05e-13	2.36e-10
82117	42130	3R	osa	17	15.6	4.30e-13	2.36e-10
163416	32817	X	CrebB-17A	12	22.3	2.49e-12	1.26e-09
150710	32007	X	sesB	7	51.5	5.26e-12	2.47e-09
131170	40205	3L	CG42674	16	12.7	4.91e-11	2.15e-08
115767	38879	3L	pbl	12	15.8	2.81e-10	1.16e-07
134207	40464	3L	Ten-m	12	15.6	3.49e-10	1.35e-07
11103	36104	2R	G-alpha47A	13	14.1	3.87e-10	1.41e-07
108973	38376	3L	BtbVII	10	18.7	5.84e-10	2.02e-07
110493	38491	3L	ens	16	10.6	7.63e-10	2.51e-07

We plot all the exons for the top two most differentially spliced genes. Exons that are individually significant are highlighted.

```
> par(mfrow=c(1,2))
> plotSpliceDGE(sp, geneid="trol", genecol="Symbol")
> plotSpliceDGE(sp, geneid="lola", genecol="Symbol")
```



We can see that a block of five or six exons at the right end of the *trol* gene are relatively lost when *Pasilla* is down. Most exons in the first half of the gene behave similarly to each other. This gene is on the negative strand, so transcription is from right to left. The gene *trol* was identified by Brooks et al [3] to have a novel set of coordinately regulated exons.

4.5.11 Setup

This analysis was conducted on:

```
> sessionInfo()

R version 3.4.2 (2017-09-28)
Platform: x86_64-w64-mingw32/x64 (64-bit)
Running under: Windows 10 x64 (build 15063)

Matrix products: default

locale:
[1] LC_COLLATE=English_Australia.1252 LC_CTYPE=English_Australia.1252
[3] LC_MONETARY=English_Australia.1252 LC_NUMERIC=C
[5] LC_TIME=English_Australia.1252

attached base packages:
[1] parallel stats4 stats graphics grDevices utils datasets methods base

other attached packages:
[1] GO.db_3.4.1 org.Mm.eg.db_3.4.1 tweedEseqCountData_1.14.0
[4] NBPSseq_0.3.0 org.Hs.eg.db_3.4.1 AnnotationDbi_1.38.2
[7] IRanges_2.10.3 S4Vectors_0.14.5 Biobase_2.36.2
[10] BiocGenerics_0.22.0 edgeR_3.19.8 limma_3.32.7

loaded via a namespace (and not attached):
[1] Rcpp_0.12.13 compiler_3.4.2 plyr_1.8.4 tools_3.4.2 digest_0.6.12
[6] statmod_1.4.30 bit_1.1-12 RSQLite_2.0 memoise_1.1.0 tibble_1.3.4
[11] gtable_0.2.0 lattice_0.20-35 pkgconfig_2.0.1 rlang_0.1.2 DBI_0.7
[16] stringr_1.2.0 locfit_1.5-9.1 bit64_0.9-7 grid_3.4.2 qvalue_2.8.0
[21] ggplot2_2.2.1 reshape2_1.4.2 blob_1.1.0 magrittr_1.5 scales_0.5.0
[26] splines_3.4.2 colorspace_1.3-2 stringi_1.1.5 lazyeval_0.2.0 munsell_0.4.3
```

4.5.12 Acknowledgements

Thanks to Yang Liao for mapping the reads and running featureCounts and Yifang Hu for the initial analysis of the data.

4.6 CRISPR-Cas9 knockout screen analysis

4.6.1 Introduction

Dai *et al.* (2014) [7] describe the use of edgeR to analyze data from pooled genetic screens utilizing either shRNAs or CRISPR-Cas9 to disrupt gene expression in a population of cells.

In this case study we analyze data from a pooled screen that uses CRISPR-Cas9 (clustered regularly interspaced short palindromic repeats-associated nuclease Cas9) knockout technology. In this example, a library of around 64,000 sgRNAs (as used in Shalem *et al.* 2014 [32]) were screened to look for genes that may lead to resistance from a particular drug. This unpublished data set has been anonymised.

4.6.2 Sequence processing

Multiple single guide RNAs (sgRNAs) per gene (generally between 3-6) were included in the screen. Below we read in the raw sequences from the paired end fastq files *screen4_R1.fastq* and *screen4_R2.fastq* using the `processAmplicons` function in `edgeR`. This screen employed a dual indexing strategy where the first 8 bases from each pair of reads contained an index sequence that uniquely identifies which sample a particular sgRNA sequence originated from. Matches between sample indexes and sgRNAs listed in the files *Samples4.txt* and *sgRNAs4.txt* are identified by `processAmplicons` to produce a `DGEList` of counts.

```
> # Read in sample & sgRNA information
> sampleanno <- read.table("Samples4.txt", header=TRUE, sep="\t")
> sampleanno[1:5,]
> sgseqs <- read.table("sgRNAs4.txt", header=TRUE, sep="\t")
> sgseqs[1:5,]
> # Process raw sequences from fastq files
> x <- processAmplicons("screen4_R1.fastq", readfile2="screen4_R2.fastq",
+   barcodefile="Samples4.txt", hairpinfile="sgRNAs4.txt",
+   barcodeStart=1, barcodeEnd=8, hairpinStart=33, hairpinEnd=52,
+   barcodeStartRev=1, barcodeEndRev=8, verbose=TRUE)
```

Note that this dual indexing strategy requires an additional column named ‘*Sequences-Rev*’ in the file that contains the sample annotation information. Also, `readFile2` must be specified, along with position information (`barcodeStartRev`, `barcodeEndRev`) for the second index in the second read from each pair (in this case the index can be found in the first 8 bases).

4.6.3 Filtering and data exploration

We next filter out sgRNAs and samples with low numbers of reads.

```
> x

An object of class "DGEList"
$counts
      A1_1_1 A2_1_2 A3_1_3 A4_1_4 A5_1_5 A6_1_6 A7_2_1 A8_2_2 A9_2_3 A10_2_4 A11_2_5 A12_2_6
sgRNA1      0     14      0      0      3     36      1     55      0     23      0     62
```

sgRNA2	0	18	0	0	1	22	0	26	0	29	0	43
sgRNA3	0	50	0	0	4	52	1	98	0	60	0	111
sgRNA4	0	32	0	0	3	55	2	54	0	51	0	57
sgRNA5	0	7	0	0	1	3	0	3	0	5	1	5
A13_3_1 A14_3_2 A15_3_3 A16_3_4 A17_3_5 A18_3_6 A19_4_1 A20_4_2 A21_4_3 A22_4_4 A23_4_5												
sgRNA1	0	21	0	30	21	36	0	37	0	39	1	
sgRNA2	0	27	0	27	26	30	1	23	0	44	0	
sgRNA3	0	59	0	62	24	63	0	44	0	106	0	
sgRNA4	0	43	0	50	19	26	0	44	0	94	0	
sgRNA5	0	3	0	3	1	7	0	1	0	8	0	
A24_4_6 B1_5_1 B2_5_2 B3_5_3 B4_5_4 B5_5_5 B6_5_6 B7_6_1 B8_6_2 B9_6_3 B10_6_4 B11_6_5												
sgRNA1	63	3	5	5	26	11	4	3	4	14	3	8
sgRNA2	34	14	27	16	77	22	42	9	24	12	27	15
sgRNA3	70	16	39	27	53	41	43	31	24	14	35	43
sgRNA4	107	15	13	12	24	12	22	10	10	11	20	15
sgRNA5	3	0	5	12	15	6	25	6	9	6	3	9
B12_6_6 B13_7_1 B14_7_2 B15_7_3 B16_7_4 B17_7_5 B18_7_6 B19_8_1 B20_8_2 B21_8_3 B22_8_4												
sgRNA1	6	9	10	6	8	11	31	6	13	9	25	
sgRNA2	41	11	23	14	64	46	66	18	31	12	94	
sgRNA3	45	38	51	14	59	38	73	31	29	31	63	
sgRNA4	18	13	12	7	28	15	23	14	18	19	27	
sgRNA5	16	1	5	0	3	7	11	1	7	3	18	
B23_8_5 B24_8_6 A1_1_7 A2_1_8 A3_1_9 A7_2_7 A8_2_8 A9_2_9 A13_3_7 A14_3_8 A15_3_9 A19_4_7												
sgRNA1	13	19	0	18	0	0	38	0	0	16	0	0
sgRNA2	36	64	0	12	0	0	18	0	0	15	0	0
sgRNA3	58	74	0	30	0	4	71	0	0	32	0	1
sgRNA4	19	36	0	27	0	1	39	0	0	34	0	1
sgRNA5	24	12	0	2	0	0	2	0	0	8	0	0
A20_4_8 A21_4_9 B1_5_7 B2_5_8 B3_5_9 B7_6_7 B8_6_8 B9_6_9 B13_7_7 B14_7_8 B15_7_9 B19_8_7												
sgRNA1	32	0	5	6	5	10	5	15	2	9	3	10
sgRNA2	16	0	9	20	8	11	22	7	7	22	16	20
sgRNA3	39	0	10	19	23	19	14	30	30	35	24	27
sgRNA4	28	0	8	9	9	8	10	5	11	9	8	11
sgRNA5	0	0	0	9	4	4	10	3	2	2	0	3
B20_8_8 B21_8_9												
sgRNA1	15	8										
sgRNA2	20	9										
sgRNA3	18	17										
sgRNA4	12	11										
sgRNA5	10	8										

64746 more rows ...

\$samples

	ID	lib.size	norm.factors	SequencesReverse	group	Infection	Replicate	IndexF	IndexR
1	A1_1_1	188	1	TAAGGCCGA	Drug	1	1	1	1
2	A2_1_2	667530	1	CGTACTAG	NoDrug	1	1	1	2
3	A3_1_3	1340	1	AGGCAGAA	Drug	1	1	1	3
4	A4_1_4	2473	1	TCCTGAGC	NoDrug	1	1	1	4
5	A5_1_5	69161	1	GGACTCCT	Drug	1	1	1	5

67 more rows ...

\$genes

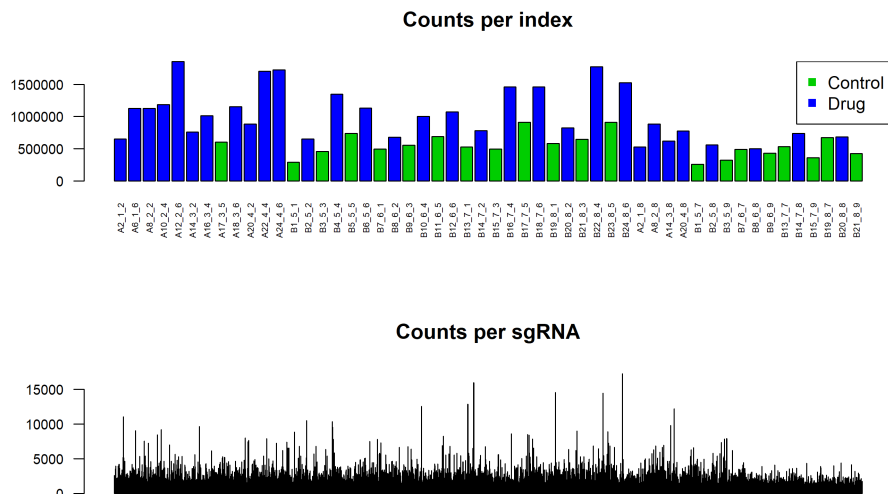
	ID	Sequences	Gene
1	sgRNA1	TACCCTGGGACTGTACCCCC	99
2	sgRNA2	ACCCTTGCTGCACGACCTGC	99
3	sgRNA3	TCGCTCGCCCCGCTCTTCCT	99
4	sgRNA4	TGACGCCTCGGACGTGTCTG	19
5	sgRNA5	CGTCATAGCCAATCTTCTTC	19

64746 more rows ...

```
> table(x$samples$group)
```

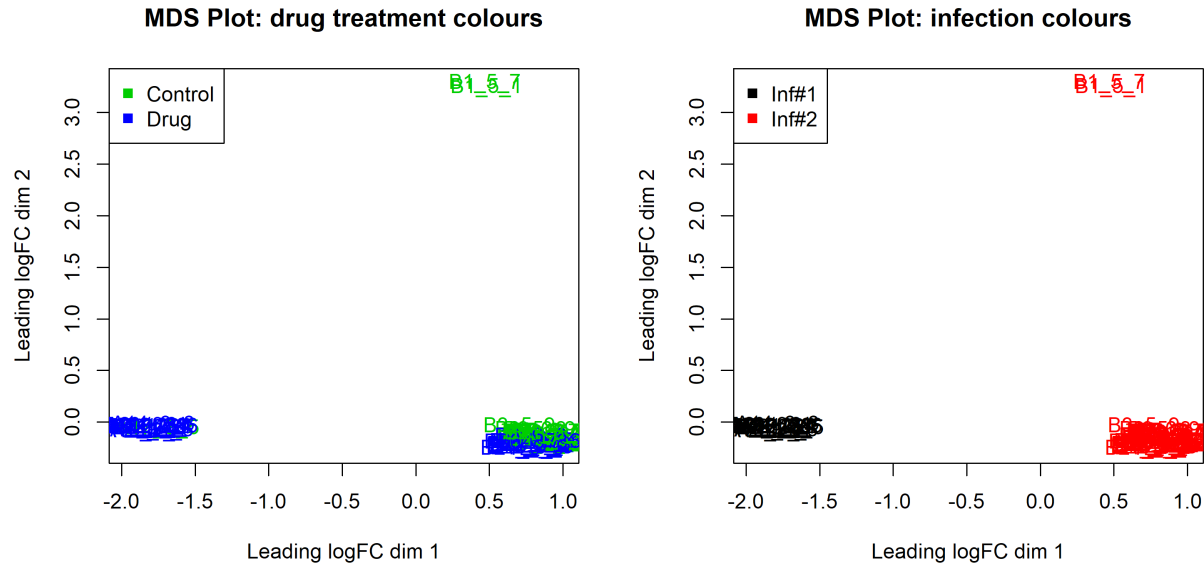
Drug	NoDrug
40	32

```
> # Filter sgRNAs and samples with low counts
> # Need a CPM greater than 5 in 15 or more samples to keep sgRNAs
> selr <- rowSums(cpm(x$counts)>5)>=15
> # Need at least 100,000 reads to keep a given sample
> selc <- colSums(x$counts)>=100000
> x <- x[selr,selc]
> # Set up drug treatment colours
> cols <- as.numeric(x$samples$group)+2
> # Plot number of sgRNAs that could be matched per sample
> # and total for each sgRNA across all samples
> par(mfrow=c(2,1))
> barplot(colSums(x$counts), las=2, main="Counts per index", col=cols, cex.names=0.5, cex.axis=0.8)
> legend("topright", legend=c("Control", "Drug"), col=c(3,4), pch=15)
> barplot(rowSums(x$counts), las=2, main="Counts per sgRNA", axisnames=FALSE, cex.axis=0.8)
```



A multidimensional scaling plot was generated to assess the consistency between replicate samples. There is a clear separation between the two infections, indicating the need to incorporate an effect for this in the GLM.

```
> # Make an MDS plot to visualise relationships between replicate samples
> # Set up infection colours
> cols2 <- x$samples$Infection
> par(mfrow=c(1,2))
> plotMDS(x, col=cols, main="MDS Plot: drug treatment colours")
> legend("topleft", legend=c("Control", "Drug"), col=c(3,4), pch=15)
> plotMDS(x, col=cols2, main="MDS Plot: infection colours")
> legend("topleft", legend=c("Inf#1", "Inf#2"), col=c(1,2), pch=15)
```



4.6.4 The design matrix and dispersion estimation

A design matrix is set up for the GLM analysis, and the sgRNA-specific variation is estimated and plotted (while taking into account both drug treatment and infection number).

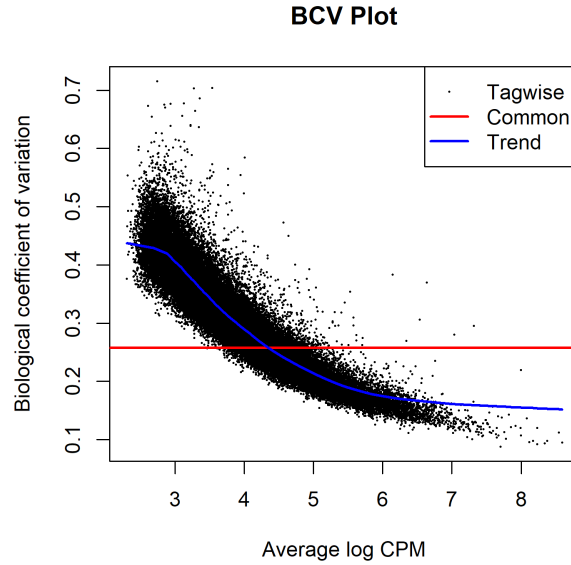
```
> # Set up design matrix for GLM
> treatment <- relevel(as.factor(x$samples$group), "NoDrug")
> infection <- as.factor(x$samples$Infection)
> des <- model.matrix(~treatment+infection)
> des[1:5,]
```

```
(Intercept) treatmentDrug infection2
1           1           0           0
2           1           0           0
3           1           0           0
4           1           0           0
5           1           0           0
```

```
> colnames(des)[2:3] <- c("Drug", "Infection2")
> # Estimate dispersions
> xglm <- estimateDisp(x, des)
> sqrt(xglm$common.disp)
```

```
[1] 0.258
```

```
> # Plot BCVs versus abundance
> plotBCV(xglm, main="BCV Plot")
```



4.6.5 Differential representation analysis

We use the function `glmFit` to fit the sgRNA-specific models and `glmLRT` to do the testing between the drug treated and control samples. The top ranked sgRNAs are listed using the `topTags` function and sgRNAs with $\text{FDR} < 0.0001$ [2] and $\text{log-fold-change} \geq 1$ are highlighted on a plot of log-fold-change versus log-counts-per-millions by the `plotSmeare` function. Since this is a positive screen, we highlight over-represented sgRNAs (i.e. those with positive log-fold-changes) since the model is parameterized to compare drug treatment versus control (coefficient 2 in the design matrix).

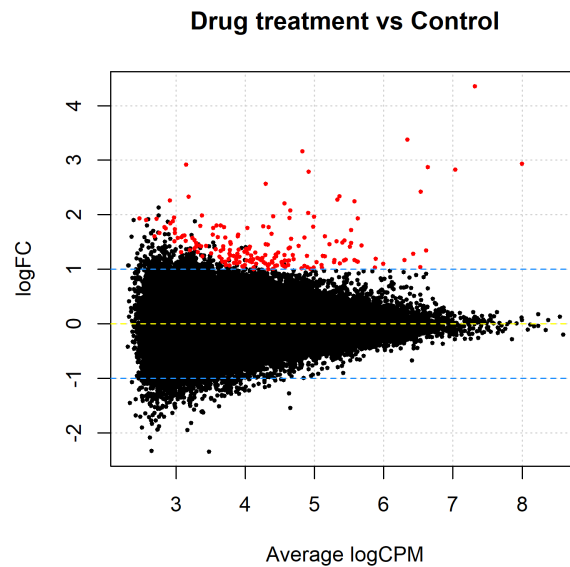
```
> # Fit negative binomial GLM
> fit <- glmFit(xglm, des)
> # Carry out Likelihood ratio test
> lrt <- glmLRT(fit, coef=2)
> # Show top ranked sgRNAs
> topTags(lrt)
```

```
Coefficient: Drug
```

	ID	Sequences	Gene	logFC	logCPM	LR	PValue	FDR
sgRNA816	sgRNA816	TCCGAACCTCCCCCTTCCCGA	269	4.36	7.32	699	4.54e-154	2.56e-149
sgRNA4070	sgRNA4070	GTTGTGCTCAGTACTGACTT	1252	2.94	8.00	659	2.14e-145	6.04e-141
sgRNA6351	sgRNA6351	AAAAACGTATCTATTTTAC	1957	3.37	6.34	422	8.56e-94	1.61e-89
sgRNA12880	sgRNA12880	CTGCACCGAAGAGAGCTGCT	3979	2.83	7.04	322	5.45e-72	7.68e-68
sgRNA23015	sgRNA23015	CAATTGATCTCTTCTACTG	6714	3.16	4.83	233	1.35e-52	1.52e-48
sgRNA62532	sgRNA62532	AAACACGTCCAGTGCAGCCC	19612	2.79	4.91	216	6.18e-49	5.81e-45
sgRNA38819	sgRNA38819	TACGTTGTCGGGCGCCGCCA	11531	2.42	6.54	204	2.96e-46	2.38e-42
sgRNA3887	sgRNA3887	AACGCTGGACTCGAATGGCC	1194	2.28	5.33	203	4.05e-46	2.85e-42

```
sgRNA19299 sgRNA19299 GGGGTCTTACCCGAGGCTCC 5732 1.94 5.63 202 7.67e-46 4.80e-42
sgRNA52924 sgRNA52924 CCACCGCGTTCCACTTCTTG 16395 2.87 6.64 193 5.54e-44 3.12e-40
```

```
> # Select sgRNAs with FDR < 0.0001 and logFC <= -1 to highlight on plot
> thresh <- 0.0001
> lfc <- 1
> top4 <- topTags(lrt, n=Inf)
> top4ids <- top4$table[top4$table$FDR<thresh & top4$table$logFC>=lfc,1]
> # Plot logFC versus logCPM
> plotSmear(lrt, de.tags=top4ids, pch=20, cex=0.6, main="Drug treatment vs Control")
> abline(h = c(-1, 0, 1), col = c("dodgerblue", "yellow", "dodgerblue"), lty=2)
```



4.6.6 Gene set tests to summarize over multiple sgRNAs targeting the same gene

We finish this analysis by summarising data across multiple sgRNAs that target the same gene in order to get a gene-by-gene ranking, rather than a sgRNA-specific one. The *camera* gene-set test [37] is used for this purpose. For this analysis, the collection of sgRNAs that target a specific gene can be regarded as a ‘set’. In the code below, we restrict our analysis to genes with more than 3 sgRNAs. A barcode plot, highlighting the rank of sgRNAs for a given gene relative to the entire data set is generated for the top-ranked gene (11531). Abundance of sgRNAs targeting this gene tend to increase with drug treatment (FDR=0.0003).

```
> # Carry out camera gene-set analysis
> genesymbols <- x$genes[,3]
```

```

> genesymbolist <- list()
> unq <- unique(genesymbols)
> unq <- unq[!is.na(unq)]
> for(i in unq) {
+   sel <- genesymbols==i & !is.na(genesymbols)
+   if(sum(sel)>3)
+     genesymbolist[[i]] <- which(sel)
+ }
> # Run camera for all genes
> camera.res <- camera(xglm, index=genesymbolist, des, contrast=2)
> # Display results for top ranked genes
> camera.res[1:10,]

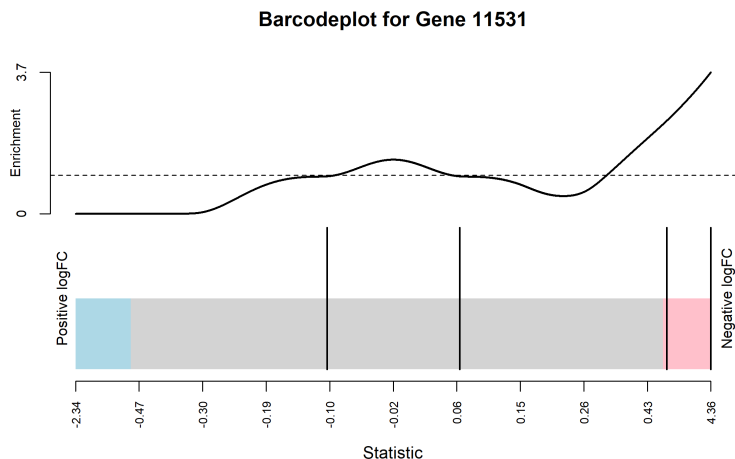
```

	NGenes	Direction	PValue	FDR
19612	5	Up	1.44e-08	7.92e-05
8808	4	Up	9.36e-06	2.33e-02
3979	4	Up	1.34e-05	2.33e-02
8370	4	Up	1.69e-05	2.33e-02
11531	4	Up	2.33e-05	2.57e-02
10386	4	Up	1.40e-04	1.14e-01
2005	4	Up	1.45e-04	1.14e-01
4086	4	Up	1.95e-04	1.34e-01
10784	4	Up	2.26e-04	1.38e-01
11412	5	Up	6.93e-04	3.82e-01

```

> # Make a barcode plot for an example that ranks highly
> # Gene 11531
> barcodeplot(lrt$table$logFC, index=genesymbolist[[11531]],
+   main="Barcodeplot for Gene 11531",
+   labels=c("Positive logFC", "Negative logFC"),
+   quantile=c(-0.5,0.5))

```



The raw data from this example and several other case studies for this technology can be found at <http://bioinf.wehi.edu.au/shRNAseq/>.

4.6.7 Setup

This analysis was conducted on:

```
> sessionInfo()

R version 3.4.2 (2017-09-28)
Platform: x86_64-w64-mingw32/x64 (64-bit)
Running under: Windows 10 x64 (build 15063)

Matrix products: default

locale:
[1] LC_COLLATE=English_Australia.1252 LC_CTYPE=English_Australia.1252
[3] LC_MONETARY=English_Australia.1252 LC_NUMERIC=C
[5] LC_TIME=English_Australia.1252

attached base packages:
[1] parallel stats4 stats graphics grDevices utils datasets methods base

other attached packages:
[1] GO.db_3.4.1 org.Mm.eg.db_3.4.1 tweekDEseqCountData_1.14.0
[4] NBPSeg_0.3.0 org.Hs.eg.db_3.4.1 AnnotationDbi_1.38.2
[7] IRanges_2.10.3 S4Vectors_0.14.5 Biobase_2.36.2
[10] BiocGenerics_0.22.0 edgeR_3.19.8 limma_3.32.7

loaded via a namespace (and not attached):
[1] Rcpp_0.12.13 compiler_3.4.2 plyr_1.8.4 tools_3.4.2 digest_0.6.12
[6] statmod_1.4.30 bit_1.1-12 RSQLite_2.0 memoise_1.1.0 tibble_1.3.4
[11] gtable_0.2.0 lattice_0.20-35 pkgconfig_2.0.1 rlang_0.1.2 DBI_0.7
[16] stringr_1.2.0 locfit_1.5-9.1 bit64_0.9-7 grid_3.4.2 qvalue_2.8.0
[21] ggplot2_2.2.1 reshape2_1.4.2 blob_1.1.0 magrittr_1.5 scales_0.5.0
[26] splines_3.4.2 colorspace_1.3-2 stringi_1.1.5 lazyeval_0.2.0 munsell_0.4.3
```

4.6.8 Acknowledgements

Thanks to Dr Sam Wormald from the WEHI for providing the data set used in this case study.

4.7 Bisulfite sequencing of mouse oocytes

4.7.1 Introduction

The bisulfite sequencing (BS-seq) data of this case study is described in Gahurova *et al.* [9]. The sequence and count data are publicly available from the Gene Expression Omnibus (GEO) at the series accession number GSE86297.

This study investigates the onset and progression of *de novo* methylation. Growing oocytes from pre-pubertal mouse ovaries (post-natal days 7-18) isolated and sorted into the following, non-overlapping size categories: 40-45, 50-55 and 60-65 μm with two biological replicates in each. Methylation maps were generated by bisulfite conversion of oocyte DNA and Illumina sequencing. Reduced representation bisulfite sequencing (RRBS [22]) was applied for focusing coverage of CGIs and other GC-rich sequences in all three size classes of oocytes. RRBS reads were trimmed to remove poor quality calls and adapters using Trim Galore and mapped to the mouse genome GRCm38 assembly by Bismark [12]. This is summarized in the table below.

```
> targets <- read.delim("targets.txt", header=TRUE)
> targets
```

	GEO	Sample	Source
1	GSM2299710	RRBS_40_45A	40-45um
2	GSM2299711	RRBS_40_45B	40-45um
3	GSM2299712	RRBS_50_55A	50-55um
4	GSM2299713	RRBS_50_55B	50-55um
5	GSM2299714	RRBS_60_65A	60-65um
6	GSM2299715	RRBS_60_65B	60-65um

4.7.2 Reading in the data

The Bismark outputs of the data include one coverage file of the methylation in CpG context for each sample. The coverage file for each of the six samples is available for download at GEO. The first six rows of the coverage output of CpG methylation in the first sample are shown below.

```
> s1 <- read.delim(file="GSM2299710_RRBS_40-45oocyte_LibA.cov.txt", header=FALSE)
> head(s1)
```

	V1	V2	V3	V4	V5	V6
1	6	3121266	3121266	0.00	0	17
2	6	3121296	3121296	0.00	0	17
3	6	3179319	3179319	1.28	1	77
4	6	3180316	3180316	4.55	1	21


```

5 6 3182928 3182928 4.33 22 486
6 6 3182937 3182937 5.37 61 1074

```

The six columns (from left to right) represent: chromosome, start position, end position, methylation proportion in percentage, number of methylated C's and number of unmethylated C's. Since the start and end positions of a CpG site from Bismark are the same, we can keep only one of them. The last two columns of counts are we will use for the analysis.

Suppose we are interested in the CpG methylation in chromosome 1. We read in the coverage files of all six samples. Then we subset the data (chromosome 1 only) and combine the read counts of methylated and un-methylated C's of all the samples. A DGEList object is created using the count table, and the chromosome number and positions are used for annotation.

```
> head(data)
```

	Chr	Position	40-45um-A-Me	40-45um-A-Un	40-45um-B-Me	40-45um-B-Un	50-55um-A-Me	50-55um-A-Un
1	1	3020877	11	73	17	60	14	100
2	1	3020891	6	78	4	74	4	112
3	1	3020946	4	142	8	361	5	205
4	1	3020988	9	29	20	71	13	47
5	1	3021013	4	33	11	80	5	55
6	1	3093908	3	33	1	32	5	26

		50-55um-B-Me	50-55um-B-Un	60-65um-A-Me	60-65um-A-Un	60-65um-B-Me	60-65um-B-Un
1	0	21	5	81	9	48	
2	2	19	5	81	9	48	
3	8	157	17	178	19	149	
4	6	88	11	39	1	24	
5	16	76	9	41	12	13	
6	1	0	2	29	1	14	

```

> group <- targets$Source
> y <- DGEList(counts=data[,-(1:2)], group=rep(group,each=2), genes=data[,1:2])
> y

```

An object of class "DGEList"

\$counts

	40-45um-A-Me	40-45um-A-Un	40-45um-B-Me	40-45um-B-Un	50-55um-A-Me	50-55um-A-Un	50-55um-B-Me
1	11	73	17	60	14	100	0
2	6	78	4	74	4	112	2
3	4	142	8	361	5	205	8
4	9	29	20	71	13	47	6
5	4	33	11	80	5	55	16

	50-55um-B-Un	60-65um-A-Me	60-65um-A-Un	60-65um-B-Me	60-65um-B-Un
1	21	5	81	9	48
2	19	5	81	9	48
3	157	17	178	19	149
4	88	11	39	1	24

```

5          76          9          41          12          13
140814 more rows ...

```

```

$samples
      group lib.size norm.factors
40-45um-A-Me 40-45um    64671         1
40-45um-A-Un 40-45um   2024346         1
40-45um-B-Me 40-45um    87460         1
40-45um-B-Un 40-45um   3098364         1
50-55um-A-Me 50-55um    141225         1
7 more rows ...

```

```

$genes
  Chr Position
1   1  3020877
2   1  3020891
3   1  3020946
4   1  3020988
5   1  3021013
140814 more rows ...

```

The count matrix of the DGEList object has a total of 12 columns with 2 columns (methylated and unmethylated C's) for each of the 6 samples. There are more than 140,000 CpG sites detected on chromosome 1 across all the samples by Bismark.

4.7.3 Filtering and normalization

For each CpG site, both the numbers of methylated and unmethylated C's should be taken into account for assessing the methylation status. The total number of methylated and unmethylated C's at a CpG site detected in a particular sample can be considered as the “expression level” of that CpG site in that sample. Hence, the sequencing depth of each sample should be calculated using the total number of methylated and unmethylated C's detected in that sample. Filtering and normalization should also be based on the sum of methylated and unmethylated counts of each CpG site.

Here a CpG site is retained if it has at least 10 counts (either methylated or unmethylated) in all six samples.

```

> counts.total <- t(rowsum(t(y$counts), group=gl(6,2)))
> keep <- rowSums(counts.total >= 10) == 6
> table(keep)

keep
FALSE  TRUE
121814 19005

> y <- y[keep, , keep.lib.sizes=FALSE]

```

Normalization is an essential step in RNA-seq differential expression analysis. It is however slightly different in differential methylation analysis of BS-seq data.

For DNA methylation studies, the direct comparison between methylated and unmethylated CpGs is usually not of interest. If a scaling normalization factor, for example from TMM, is calculated for each sample, then the same normalization factor shall be applied to both methylated and unmethylated counts within that sample. When the methylation levels between different samples are compared, the scaling factors are cancelled out within each sample and hence has no effect on the final differential methylation results. Therefore we do not perform normalization as we would for RNA-seq data.

We set the library sizes for each sample to be the average of the total read counts for the methylated and unmethylated libraries:

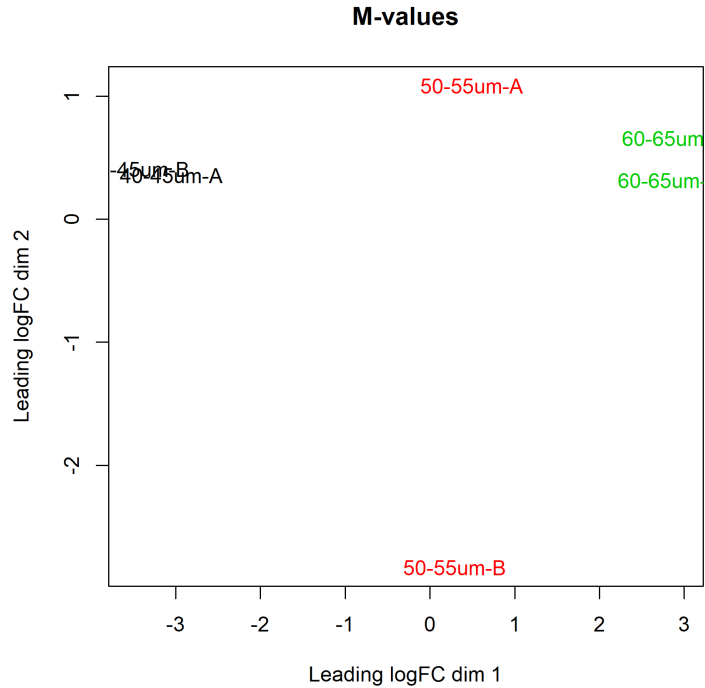
```
> TotalReadCount <- colMeans(matrix(y$samples$lib.size, nrow=2))
> y$samples$lib.size <- rep(TotalReadCount, each=2)
> y$samples
```

	group	lib.size	norm.factors
40-45um-A-Me	40-45um	668196	1
40-45um-A-Un	40-45um	668196	1
40-45um-B-Me	40-45um	1249858	1
40-45um-B-Un	40-45um	1249858	1
50-55um-A-Me	50-55um	740245	1
50-55um-A-Un	50-55um	740245	1
50-55um-B-Me	50-55um	809096	1
50-55um-B-Un	50-55um	809096	1
60-65um-A-Me	60-65um	617650	1
60-65um-A-Un	60-65um	617650	1
60-65um-B-Me	60-65um	655405	1
60-65um-B-Un	60-65um	655405	1

4.7.4 Data exploration

The data can be explored by generating multi-dimensional scaling (MDS) plots on the methylation level (M-value) of the CpG sites. The M-value is calculated by the log of the ratio of methylated and unmethylated C's, which is equivalent to the difference of the logCPMs between methylated and unmethylated C's. A prior count of 2 is added to the logCPM calculation.

```
> logCPM <- cpm(y, log=TRUE, prior.count=2)
> M <- logCPM[, (2*(1:6)-1)] - logCPM[, 2*(1:6)]
> samples <- paste0(group, "-", rep(c("A", "B"), 3))
> colnames(M) <- samples
> plotMDS(M, col=rep(1:3, each=2), main="M-values")
```



Replicate samples cluster together within the 40-45 and 60-65 μm categories but are far apart in the 50-55 μm group. The plot also indicates a huge difference in methylation level between the 40-45 and 60-65 μm groups.

4.7.5 The design matrix

One aim of the study is to identify differentially methylated regions (DMR) between different groups. As a result, a design matrix is constructed as follows.

```
> sam <- rep(samples, each=2)
> meth <- factor(rep(c("Me", "Un"), 6), levels=c("Un", "Me"))
> design <- model.matrix(~ sam + meth)
> colnames(design) <- gsub("sam", "", colnames(design))
> colnames(design) <- gsub("meth", "", colnames(design))
> colnames(design)[1] <- "Int"
> design <- cbind(design,
+   Me2=c(0,0,0,0,1,0,1,0,0,0,0,0),
+   Me3=c(0,0,0,0,0,0,0,0,0,1,0,1,0))
> design
```

	Int	40-45um-B	50-55um-A	50-55um-B	60-65um-A	60-65um-B	Me	Me2	Me3
1	1	0	0	0	0	0	1	0	0
2	1	0	0	0	0	0	0	0	0

3	1	1	0	0	0	0	1	0	0
4	1	1	0	0	0	0	0	0	0
5	1	0	1	0	0	0	1	1	0
6	1	0	1	0	0	0	0	0	0
7	1	0	0	1	0	0	1	1	0
8	1	0	0	1	0	0	0	0	0
9	1	0	0	0	1	0	1	0	1
10	1	0	0	0	1	0	0	0	0
11	1	0	0	0	0	1	1	0	1
12	1	0	0	0	0	1	0	0	0

The first six columns represent the sample effect. The 7th column “Me” represents the methylation level (or M-value) in the 40-45 μm group. The 8th column “Me2” represents the difference in methylation level between the 50-55 and the 40-45 μm groups. Finally, the last column “Me3” represents the difference in methylation level between the 60-65 and the 40-45 μm groups.

4.7.6 Estimating the dispersion

We proceed to the standard edgeR pipeline. We estimate the NB dispersion for each CpG site using the `estimateDisp` function. It has been noticed in practice that dispersion estimates of BS-seq data seem to be independent of abundances. Therefore, we would not consider a mean-dependent dispersion trend for BS-seq methylation data.

```
> y <- estimateDisp(y, design=design, trend="none")
> y$common.dispersion
```

```
[1] 0.382
```

```
> summary(y$prior.df)
```

Min.	1st Qu.	Median	Mean	3rd Qu.	Max.
Inf	Inf	Inf	Inf	Inf	Inf

The estimated prior degrees of freedom are infinite for all the CpGs, which implies all the CpG-wise dispersions are exactly the same as the common dispersion. A BCV plot is often useful to visualize the dispersion estimates, but it is not informative in this case.

4.7.7 Differentially methylated regions

We fit NB GLMs for all the CpG loci.

```
> fit <- glmFit(y, design)
```

We identify differentially methylated regions (DMRs) (or CpG sites) between the 40-45 and 60-65 μm group using the likelihood-ratio test. As mentioned before, the difference is represented by the last coefficient “Me3”.

```
> lrt <- glmLRT(fit, coef=9)
```

The top set of most significant DMRs can be examined with `topTags`. Here, positive log-fold changes represent CpG sites that have higher methylation level in the 60-65 μm group compared to the 40-45 μm group. Multiplicity correction is performed by applying the Benjamini-Hochberg method on the p -values, to control the false discovery rate (FDR).

```
> topTags(lrt)
```

```
Coefficient: Me3
```

	Chr	Position	logFC	logCPM	LR	PValue	FDR
62156	1	172206751	13.9	5.24	46.6	8.54e-12	1.62e-07
44214	1	131987595	10.8	6.66	41.7	1.04e-10	9.87e-07
60285	1	169954561	12.2	6.31	40.9	1.59e-10	1.01e-06
23994	1	74571516	13.0	4.89	40.1	2.42e-10	1.13e-06
9188	1	36499377	14.9	3.92	39.1	3.98e-10	1.13e-06
32279	1	89533694	12.0	6.30	39.0	4.14e-10	1.13e-06
62149	1	172206570	10.3	6.66	38.8	4.60e-10	1.13e-06
25965	1	75475455	12.4	5.07	38.8	4.75e-10	1.13e-06
15132	1	51978650	12.2	5.36	38.4	5.82e-10	1.23e-06
45070	1	132515608	11.8	5.18	38.1	6.86e-10	1.24e-06

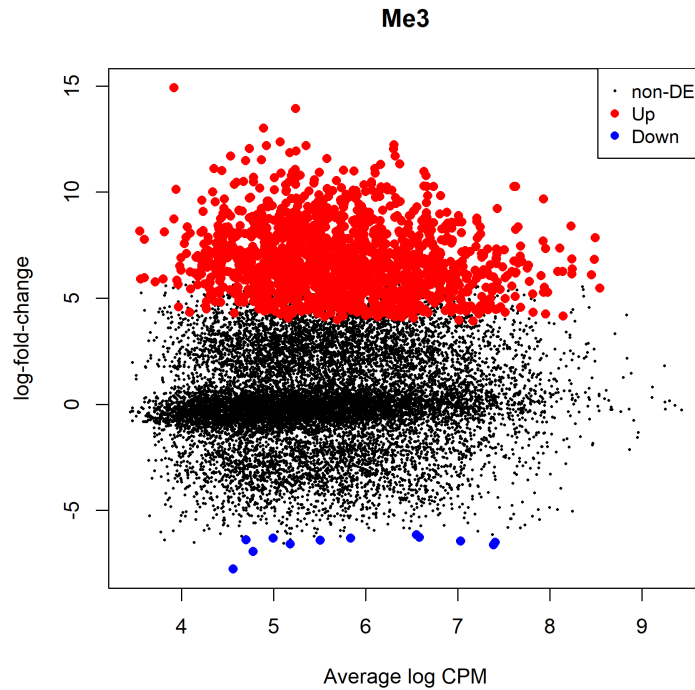
The total number of DMRs in each direction at a FDR of 5% can be examined with `decideTests`.

```
> summary(decideTests(lrt))
```

```
Me3
-1  12
0 17440
1  1553
```

The differential methylation results can be visualized using an MD plot. The difference of the M-value for each CpG site is plotted against the average abundance of that CpG site. Significantly DMRs at a FDR of 5% are highlighted.

```
> plotMD(lrt)
```



It can be seen that most of the DMRs have higher methylation levels in 60-65 μm group compared to the 40-45 μm group. This is consistent with the findings in Gahurova *et al.* [9].

4.7.8 Setup

This analysis was conducted on:

```
> sessionInfo()
```

```
R version 3.4.2 (2017-09-28)
Platform: x86_64-w64-mingw32/x64 (64-bit)
Running under: Windows 10 x64 (build 15063)
```

```
Matrix products: default
```

```
locale:
```

```
[1] LC_COLLATE=English_Australia.1252 LC_CTYPE=English_Australia.1252
[3] LC_MONETARY=English_Australia.1252 LC_NUMERIC=C
[5] LC_TIME=English_Australia.1252
```

```
attached base packages:
```

```
[1] parallel stats4 stats graphics grDevices utils datasets methods base
```

```
other attached packages:
```

[1] GO.db_3.4.1	org.Mm.eg.db_3.4.1	tweedEseqCountData_1.14.0
[4] NBPSeg_0.3.0	org.Hs.eg.db_3.4.1	AnnotationDbi_1.38.2
[7] IRanges_2.10.3	S4Vectors_0.14.5	Biobase_2.36.2
[10] BiocGenerics_0.22.0	edgeR_3.19.8	limma_3.32.7

loaded via a namespace (and not attached):

[1] Rcpp_0.12.13	compiler_3.4.2	plyr_1.8.4	tools_3.4.2	digest_0.6.12
[6] statmod_1.4.30	bit_1.1-12	RSQLite_2.0	memoise_1.1.0	tibble_1.3.4
[11] gtable_0.2.0	lattice_0.20-35	pkgconfig_2.0.1	rlang_0.1.2	DBI_0.7
[16] stringr_1.2.0	locfit_1.5-9.1	bit64_0.9-7	grid_3.4.2	qvalue_2.8.0
[21] ggplot2_2.2.1	reshape2_1.4.2	blob_1.1.0	magrittr_1.5	scales_0.5.0
[26] splines_3.4.2	colorspace_1.3-2	stringi_1.1.5	lazyeval_0.2.0	munsell_0.4.3

Bibliography

1. Anders, S., McCarthy, D.J., Chen, Y., Okoniewski, M., Smyth, G.K., Huber, W., and Robinson, M.D. (2013). Count-based differential expression analysis of RNA sequencing data using R and Bioconductor. *Nature Protocols* 8, 1765–1786.
2. Benjamini, Y. and Hochberg, Y. (1995). Controlling the false discovery rate: a practical and powerful approach to multiple testing. *Journal of the Royal Statistical Society Series B* 57, 289–300.
3. Brooks, A.N., Yang, L., Duff, M.O., Hansen, K.D., Park, J.W., Dudoit, S., Brenner, S.E., and Graveley, B.R. (2011). Conservation of an RNA regulatory map between *Drosophila* and mammals. *Genome Res* 21, 193–202.
4. Bullard, J.H., Purdom, E., Hansen, K.D., and Dudoit, S. (2010). Evaluation of statistical methods for normalization and differential expression in mRNA-Seq experiments. *BMC Bioinformatics* 18, 11–94.
5. Chen, Y., Lun, A.T.L., and Smyth, G.K. (2014). Differential expression analysis of complex RNA-seq experiments using edgeR. In S. Datta and D.S. Nettleton, editors, *Statistical Analysis of Next Generation Sequence Data*, pages 51–74. Springer, New York.
6. Cumbie, J.S., Kimbrel, J.A., Di, Y., Schafer, D.W., Wilhelm, L.J., Fox, S.E., Sullivan, C.M., Curzon, A.D., Carrington, J.C., Mockler, T.C., and Chang, J.H. (2011). Gene-counter: A computational pipeline for the analysis of RNA-Seq data for gene expression differences. *PLoS ONE* 6, e25279.
7. Dai, Z., Sheridan, J.M., Gearing, L.J., Moore, D.L., Su, S., Wormald, S., Wilcox, S., O’Connor, L., Dickins, R.A., Blewitt, M.E., and Ritchie, M.E. (2014). edgeR: a versatile tool for the analysis of shRNA-seq and CRISPR-Cas9 genetic screens. *F1000Res* 3, 95.
8. Fu, N.Y., Rios, A., Pal, B., Soetanto, R., Lun, A.T.L., Liu, K., Beck, T., Best, S., Vaillant, F., Bouillet, P., Strasser, A., Preiss, T., Smyth, G.K., Lindeman, G., , and Visvader, J. (2015). EGF-mediated induction of Mcl-1 at the switch to lactation is essential for alveolar cell survival. *Nature Cell Biology* 17, 365–375.

9. Gahurova, L., Tomizawa, S.i., Smallwood, S.A., Stewart-Morgan, K.R., Saadeh, H., Kim, J., Andrews, S.R., Chen, T., and Kelsey, G. (2017). Transcription and chromatin determinants of de novo dna methylation timing in oocytes. *Epigenetics & chromatin* 10, 25.
10. Hansen, K.D., Irizarry, R.A., and Zhijin, W. (2012). Removing technical variability in RNA-seq data using conditional quantile normalization. *Biostatistics* 13, 204–216.
11. International HapMap Consortium, T. (2005). A haplotype map of the human genome. *Nature* 437, 1299–1320.
12. Krueger, F. and Andrews, S.R. (2011). Bismark: a flexible aligner and methylation caller for bisulfite-seq applications. *bioinformatics* 27, 1571–1572.
13. Liao, Y., Smyth, G.K., and Shi, W. (2013). The Subread aligner: fast, accurate and scalable read mapping by seed-and-vote. *Nucleic Acids Research* 41, e108.
14. Liao, Y., Smyth, G.K., and Shi, W. (2014). featureCounts: an efficient general-purpose read summarization program. *Bioinformatics* 30, 923–930.
15. Lu, J., Tomfohr, J., and Kepler, T. (2005). Identifying differential expression in multiple SAGE libraries: an overdispersed log-linear model approach. *BMC Bioinformatics* 6, 165.
16. Lun, A.T.L., Chen, Y., and Smyth, G.K. (2016). It’s DE-licious: a recipe for differential expression analyses of RNA-seq experiments using quasi-likelihood methods in edgeR. *Methods in Molecular Biology* 1418, 391–416.
17. Lund, S., Nettleton, D., McCarthy, D., and Smyth, G. (2012). Detecting differential expression in RNA-sequence data using quasi-likelihood with shrunk dispersion estimates. *Statistical Applications in Genetics and Molecular Biology* 11, Article 8.
18. Marioni, J.C., Mason, C.E., Mane, S.M., Stephens, M., and Gilad, Y. (2008). RNA-seq: An assessment of technical reproducibility and comparison with gene expression arrays. *Genome Res* 18, 1509–1517.
19. McCarthy, D.J., Chen, Y., and Smyth, G.K. (2012). Differential expression analysis of multifactor RNA-Seq experiments with respect to biological variation. *Nucleic Acids Research* 40, 4288–4297.
20. McCarthy, D.J. and Smyth, G.K. (2009). Testing significance relative to a fold-change threshold is a TREAT. *Bioinformatics* 25, 765–771.
21. McCullagh, P. and Nelder, J.A. (1989). *Generalized Linear Models*. Chapman & Hall/CRC, Boca Raton, Florida, 2nd edition.

22. Meissner, A., Gnirke, A., Bell, G.W., Ramsahoye, B., Lander, E.S., and Jaenisch, R. (2005). Reduced representation bisulfite sequencing for comparative high-resolution dna methylation analysis. *Nucleic acids research* 33, 5868–5877.
23. Nelder, J.A. and Wedderburn, R.W.M. (1972). Generalized linear models. *Journal of the Royal Statistical Society Series A (General)* 135, 370–384.
24. Phipson, B., Lee, S., Majewski, I.J., Alexander, W.S., and Smyth, G.K. (2016). Robust hyperparameter estimation protects against hypervariable genes and improves power to detect differential expression. *Annals of Applied Statistics* 10, <http://arxiv.org/abs/1602.08678>.
25. Pickrell, J.K., Marioni, J.C., Pai, A.A., Degner, J.F., Engelhardt, B.E., Nkadori, E., Veyrieras, J.B., Stephens, M., Gilad, Y., and Pritchard, J.K. (2010). Understanding mechanisms underlying human gene expression variation with RNA sequencing. *Nature* 464, 768–772.
26. Pickrell, J.K., Pai, A.A., Gilad, Y., and Pritchard, J.K. (2010). Noisy splicing drives mRNA isoform diversity in human cells. *PLoS Genetics* 6, e1001236.
27. Risso, D., Schwartz, K., Sherlock, G., and Dudoit, S. (2011). GC-content normalization for RNA-Seq data. *BMC Bioinformatics* 12, 480.
28. Robinson, M., McCarthy, D., and Smyth, G. (2010). edgeR: a Bioconductor package for differential expression analysis of digital gene expression data. *Bioinformatics* 26, 139–140.
29. Robinson, M.D. and Oshlack, A. (2010). A scaling normalization method for differential expression analysis of RNA-seq data. *Genome Biology* 11, R25.
30. Robinson, M.D. and Smyth, G.K. (2007). Moderated statistical tests for assessing differences in tag abundance. *Bioinformatics* 23, 2881–2887.
31. Robinson, M.D. and Smyth, G.K. (2008). Small-sample estimation of negative binomial dispersion, with applications to SAGE data. *Biostatistics* 9, 321–332.
32. Shalem, O., Sanjana, N.E., Hartenian, E., Shi, X., Scott, D.A., Mikkelsen, T.S., Heckl, D., Ebert, B.L., Root, D.E., Doench, J.G., and Zhang, F. (2014). Genome-scale CRISPR-Cas9 knockout screening in human cells. *Science* 343, 84–7.
33. Smyth, G. (2004). Linear models and empirical Bayes methods for assessing differential expression in microarray experiments. *Statistical Applications in Genetics and Molecular Biology* 3, Article 3.

34. Subramanian, A., Tamayo, P., Mootha, V.K., Mukherjee, S., Ebert, B.L., Gillette, M.A., Paulovich, A., Pomeroy, S.L., Golub, T.R., Lander, E.S., and Mesirov, J.P. (2005). Gene set enrichment analysis: a knowledge-based approach for interpreting genome-wide expression profiles. *Proc Natl Acad Sci USA* 102, 15545–50.
35. Tuch, B.B., Laborde, R.R., Xu, X., Gu, J., Chung, C.B., Monighetti, C.K., Stanley, S.J., Olsen, K.D., Kasperbauer, J.L., Moore, E.J., Broome, A.J., Tan, R., Brzoska, P.M., Muller, M.W., Siddiqui, A.S., Asmann, Y.W., Sun, Y., Kuersten, S., Barker, M.A., Vega, F.M.D.L., and Smith, D.I. (2010). Tumor transcriptome sequencing reveals allelic expression imbalances associated with copy number alterations. *PLoS ONE* 5, e9317.
36. Wu, D., Lim, E., Vaillant, F., Asselin-Labat, M., Visvader, J., and Smyth, G. (2010). ROAST: rotation gene set tests for complex microarray experiments. *Bioinformatics* 26, 2176–2182.
37. Wu, D. and Smyth, G. (2012). Camera: a competitive gene set test accounting for inter-gene correlation. *Nucleic Acids Research* 40, e133.